

# MONUMENT 131

## CERTIFICATE OF LOCATION OF GOVERNMENT CORNER

Center of Section 16, Township 30 North, Range 23 West, County of Ramsey, State of Minnesota.

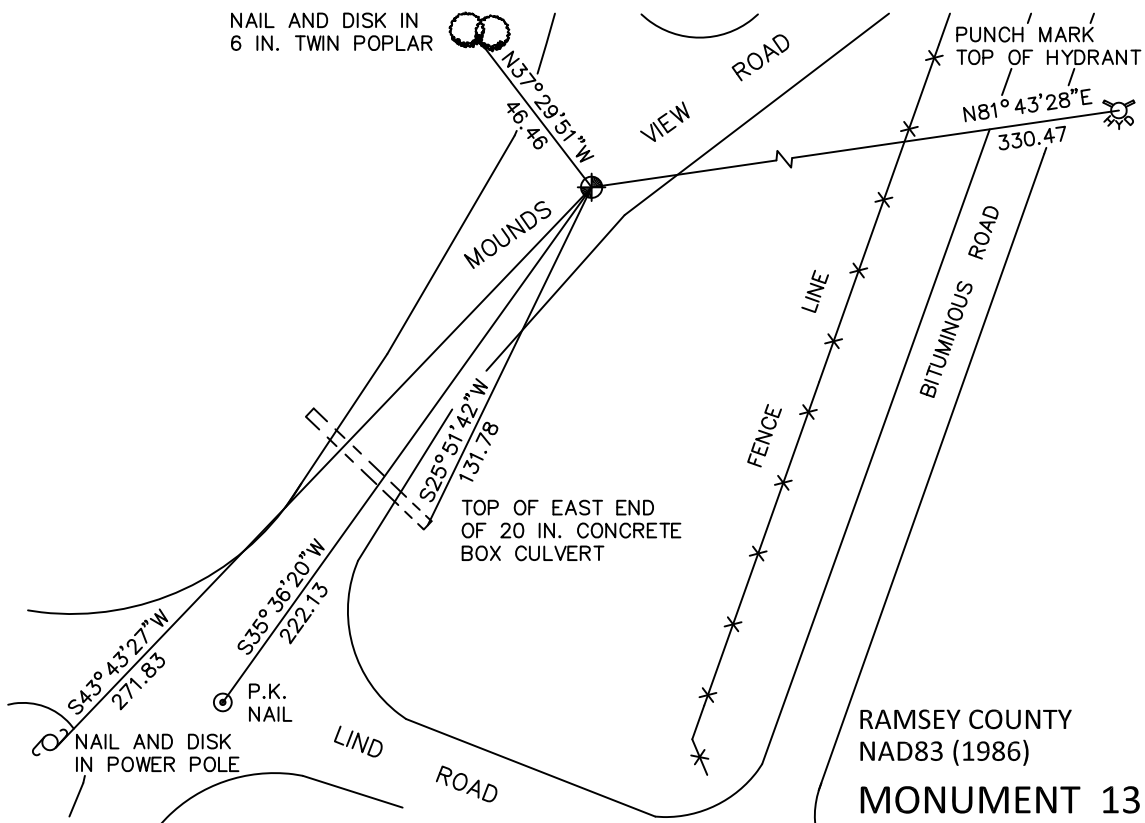
At the corner location shown on the sketch

On September 15, 2010 found a cast iron monument, down 0.05 feet.

left monument as found       raised/lowered monument       removed monument (explain)

On \_\_\_\_\_ placed a \_\_\_\_\_

### SKETCH OF REFERENCE TIES



ALL DISTANCES ARE SHOWN IN U.S. SURVEY FEET.  
BEARINGS ARE FOR TIE REFERENCE PURPOSES ONLY.

X= 553021.763 (Easting)  
Y= 207700.900 (Northing)

Statements of evidence relative to this corner are on the following page.

I hereby certify that this document has been prepared by me or under my direct supervision this \_\_\_\_\_ day of \_\_\_\_\_, 20\_\_\_\_.

Minnesota License No. \_\_\_\_\_

- County Surveyor       Deputy County Surveyor       Land Surveyor

SIGNATURE

OFFICE OF COUNTY SURVEYOR  
County of Ramsey

I hereby certify that this document was filed in the County Surveyor's office this \_\_\_\_\_ day of \_\_\_\_\_, 20\_\_\_\_.

Michael D. Fiebiger, P.L.S.  
Ramsey County Surveyor

SIGNATURE

# MONUMENT 131

Looked and found nothing. Old road plan of 1941 (Arsenal) showed a cut of +/-5 ft.,  
July 26, 1991.

Computed position using the coordinates of the four exterior quarter section corners.  
Placed a cast iron monument at computed corner location, October 21, 1991.

Tied monument, October 23, 1991.

Retied monument, April 3, 2001.

Retied monument, March 9, 2005.

Retied monument, September 15, 2010.