

MONUMENT 130

CERTIFICATE OF LOCATION OF GOVERNMENT CORNER

East Quarter Corner of Section 17, Township 30 North, Range 23 West, County of Ramsey, State of Minnesota.

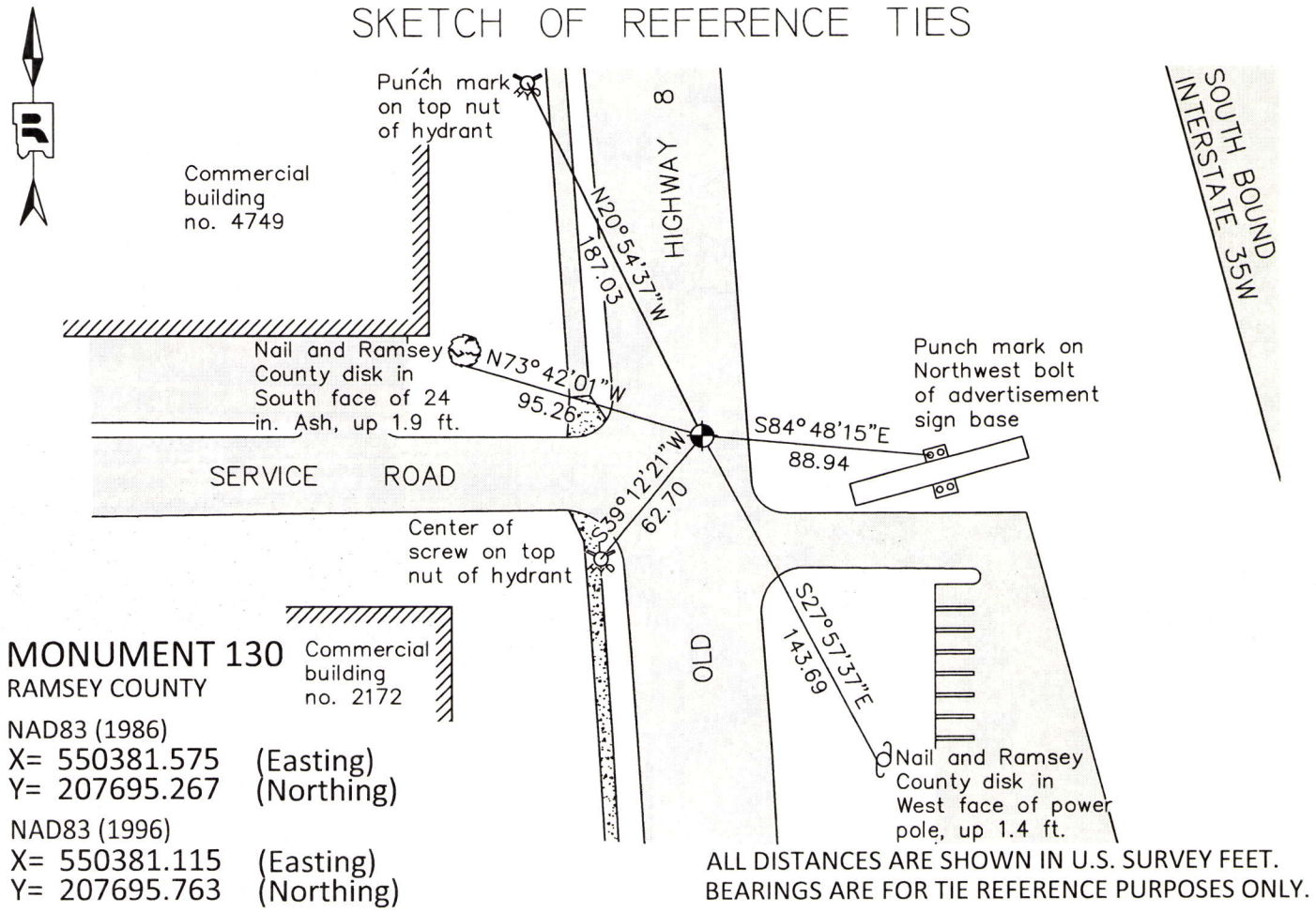
At the corner location shown on the sketch

On June 17, 2014 found a "RAMSEY COUNTY" cast iron monument within in a cast iron manhole assembly, down 1.5 ft.

left monument as found raised/lowered monument removed monument (explain)

On _____ placed a _____

SKETCH OF REFERENCE TIES



MONUMENT 130
RAMSEY COUNTY
 NAD83 (1986)
 X= 550381.575 (Easting)
 Y= 207695.267 (Northing)
 NAD83 (1996)
 X= 550381.115 (Easting)
 Y= 207695.763 (Northing)

ALL DISTANCES ARE SHOWN IN U.S. SURVEY FEET.
 BEARINGS ARE FOR TIE REFERENCE PURPOSES ONLY.

Statements of evidence relative to this corner are on the following page.

I hereby certify that this survey, plan, or report was prepared by me or under my direct supervision, that I am a duly Licensed Land Surveyor under the laws of the state of Minnesota, and that this certificate is correct and complete to the best of my knowledge and belief.

Daniel D. Baar 6-10-15
 Daniel D. Baar Date
 Deputy County Surveyor
 Minnesota License No. 45816

OFFICE OF COUNTY SURVEYOR
 County of Ramsey

I hereby certify that this document was filed in the County Surveyor's office this 10th day of June, 20 15.

Craig W. Hinzman
 Craig W. Hinzman, L.S.
 Ramsey County Surveyor

MONUMENT 130

East Quarter Corner of Section 17, Township 30 North, Range 23 West

- | | |
|--------------------|---|
| December 16, 1847 | Set 1/4 Section post, Bur Oak 12 N28°E 29, "Do" (Bur Oak) 10 S45°W 42, Isaac N. Higbee, Deputy Surveyor. |
| May 27, 1898 | In establishing the 1/4 Corner between Sections 16 and 17, this corner was fixed 33 ft. from Skiba's fence, which he claims to be right. Government witness trees gone, Ramsey County Resurvey. |
| June 18, 1898 | Set monument, Ramsey County Surveyor's Office. |
| October 1, 1927 | Found an iron pipe, set a brass plug in concrete pavement, as well as two witness monuments consisting of a "X" on 6 in. x 6 in. x 30 in. concrete monuments, N51°46'W a distance of 53.85, and S49°30'W a distance of 51.85. Brass plug set in center of 27 ft. concrete pavement, Minnesota State Highway Commission. |
| November, 1943 | Checked monument, Ramsey County Surveyor's Office. |
| September, 1965 | Checked monument, Ramsey County Surveyor's Office. |
| August 21, 1974 | Found a granite monument down 0.17 ft. and tied, Ramsey County Surveyor's Office. |
| October 10, 1974 | Placed a cast iron cap and bolt monument, Ramsey County Surveyor's Office. |
| May 26, 1993 | Retied granite monument down +/-0.3 ft., Ramsey County Surveyor's Office. |
| Date Unknown | Removed monument for construction. |
| June 2, 1998 | Set a 20 inch cast iron monument within a cast iron manhole assembly, Ramsey County Surveyor's Office. |
| July 7, 2003 | Tied monument, Ramsey County Surveyor's Office. |
| September 8, 2006 | Concrete repair around manhole assembly, Ramsey County Surveyor's Office. |
| September 26, 2008 | Retied monument, Ramsey County Surveyor's Office. |
| April 23, 2013 | Checked cast iron monument within a cast iron manhole assembly, down 1.5 ft., and ties; performed a static GPS observation, Ramsey County Surveyor's Office. |
| June 17, 2014 | Checked cast iron monument within a cast iron manhole assembly, down 1.5 ft., and condition of ties; performed RTK GPS observations, Ramsey County Surveyor's Office. |