

# MONUMENT 125N

## CERTIFICATE OF LOCATION OF GOVERNMENT CORNER

Witness Corner to Meander Corner No. 1 on the East line of the Southeast Quarter of Section 12, Township 30 North, Range 22 West, County of Ramsey, State of Minnesota.

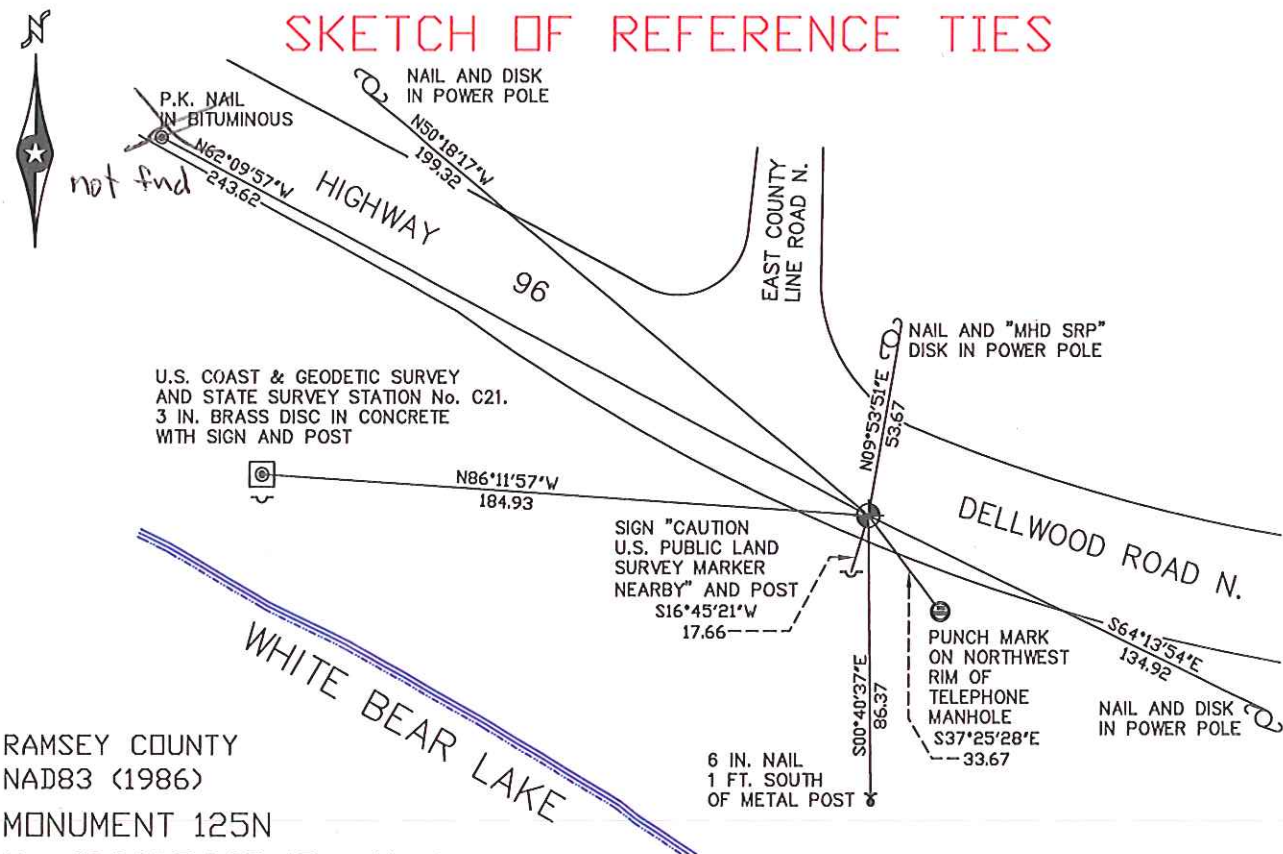
At the corner location shown on the sketch

On October 17, 2013  
 On November 5, 2008 found a cast iron monument, flush. Broken off.

left monument as found     lowered monument     removed monument (explain)

On November 8, 2013 placed a MONOT 20 inch cast iron monument  
in concrete down 0.10ft. All ties below confirmed except as noted.

### SKETCH OF REFERENCE TIES



RAMSEY COUNTY  
 NAD83 (1986)  
 MONUMENT 125N

X= 602995.867 (Easting)  
 Y= 211826.952 (Northing)

ALL DISTANCES ARE SHOWN IN U.S. SURVEY FEET.  
 BEARINGS ARE FOR TIE REFERENCE PURPOSES ONLY.

Statements of evidence relative to this corner are on the following page(s).

I hereby certify that this document and the data contained herein was prepared by me or under my direct supervision this eighth day of November, 2013.

Mark Beatty  
 SIGNATURE

Minnesota License No. 26723

County Surveyor  
 Deputy County Surveyor     Land Surveyor

OFFICE OF COUNTY SURVEYOR  
 County of Ramsey

I hereby certify that this document was filed in the County Surveyor's office on the \_\_\_ day of \_\_\_\_\_, 20\_\_.

David D. Claypool, P.L.S., County Surveyor

By \_\_\_\_\_, Deputy

# MONUMENT 125N

Witness Monument to Meander Corner No. 1 of Section 12, Township 30 North, Range 22 West

Over lake and set meander post, Wht. Oak 15 inch for meander post; Wht. Oak 12 N21°W 55, October 19, 1847.

Meander Corner No. 1 was fixed from one government stump, October 7, 1897.

Set monument, October, 1897.

Ramsey County records note M.C.#1 is "gone," October, 1939.

Looked for Meander Corner monument and found nothing, 1980.

Washington County survey crew searched for M.C.#12 (Ramsey County M.C.#1) and ties as noted on early Ramsey County survey records. Nothing was found, April 25, 1984. (Washington County Surveyor's Office)

Following a complete analysis and comparison of the record information with the field measurements, the obliterated position of this meander corner has been determined to be 1539.98 feet south from the west quarter corner of Section 7. This position maintains the corner's location as found by Ramsey County Surveyors to the monument set in 1897 to mark and perpetuate the original Public Land Survey Corner, May, 1984. (Washington County Surveyor's Office)

Washington County survey crew set a Washington County cast iron monument as a witness corner to the Meander Corner No. 12 which falls on the shore-line of White Bear Lake. The witness corner is 125.00 feet north from Meander Corner No. 12 and on line between the meander corner and the west quarter corner of Section 7, May 31, 1984. (Washington County Surveyor's Office)

Looked for granite meander corner monument that was placed in October of 1897. Lake level way down; excavated with the help of Maintenance Department and a backhoe, found nothing. Old book states Meander Corner monument washed out, October 18, 1989.

Tied Witness Monument, January 27, 1992.

Witness Monument found broken off; set a 20 inch cast iron monument and cemented in, August 1, 1996.

Found Ramsey County cast iron Witness Monument flush in concrete, September 26, 1997. (Washington County Surveyor's Office)

Tied Witness Monument, found flush, August 6, 2003.

Retied Witness Monument, November 5, 2008.

Found cast iron Witness Monument broken off; Set 20 inch MNDOT cast iron monument in concrete down 0.10 feet, October 17, 2013. (Minnesota Department of Transportation)

Note: This history was updated by the Ramsey County Surveyor's Office on February 4, 2014, and was not provided or certified by Mark Beatty on Page 1. This page was attached for records purposes.