

MONUMENT 124N

CERTIFICATE OF LOCATION OF GOVERNMENT CORNER

Witness Monument North of the South Quarter Corner of Section 12, Township 30 North, Range 22 West, County of Ramsey, State of Minnesota.

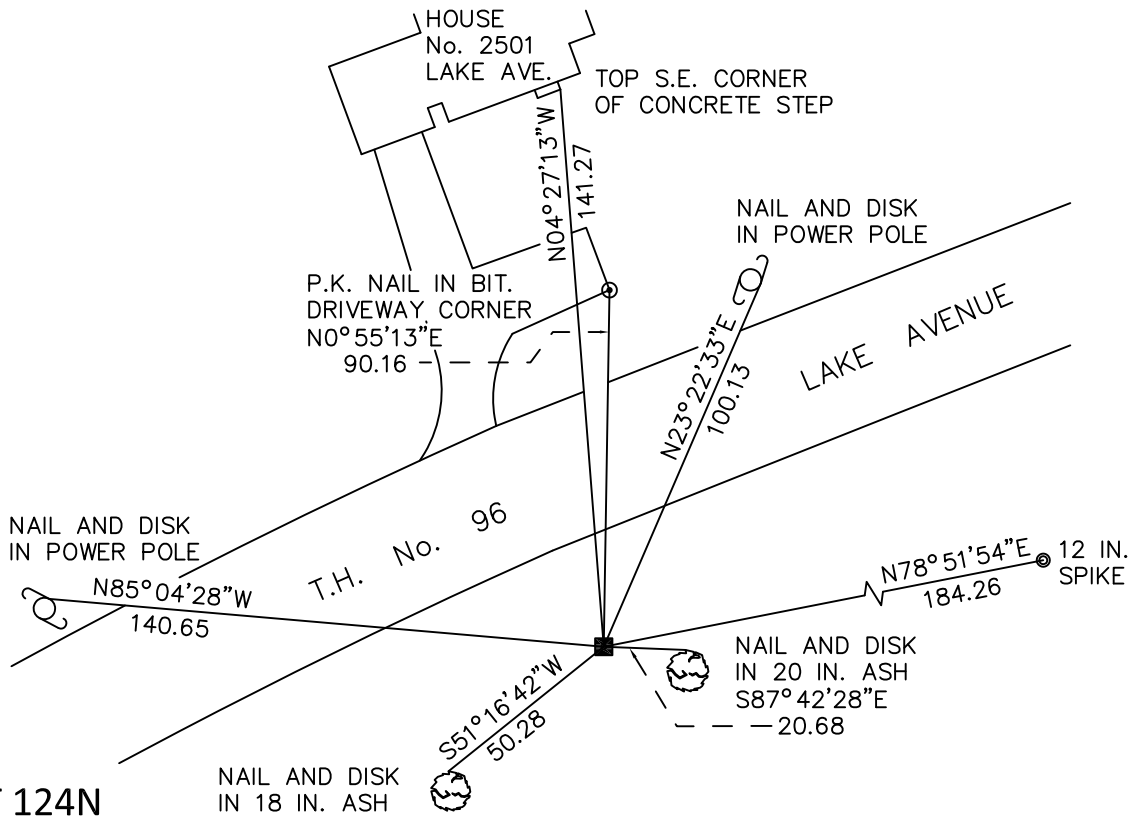
At the corner location shown on the sketch

On August 6, 2010 found a granite monument, up 0.08 feet.

left monument as found raised/lowered monument removed monument (explain)

On _____ placed a _____

SKETCH OF REFERENCE TIES



RAMSEY COUNTY
NAD83 (1986)

MONUMENT 124N

X= 600329.100 (Easting)
Y= 211699.544 (Northing)

ALL DISTANCES ARE SHOWN IN U.S. SURVEY FEET.
BEARINGS ARE FOR TIE REFERENCE PURPOSES ONLY.

Statements of evidence relative to this corner are on the following page.

I hereby certify that this document has been prepared by me or under my direct supervision this _____ day of _____, 20____.

Minnesota License No. _____

- County Surveyor Deputy County Surveyor Land Surveyor

OFFICE OF COUNTY SURVEYOR
County of Ramsey

I hereby certify that this document was filed in the County Surveyor's office this _____ day of _____, 20____.

Michael D. Fiebiger, P.L.S.
Ramsey County Surveyor

MONUMENT 124N

Found a granite monument flush with ground, May 17, 1974.

Tied monument, June 28, 1974.

Retied monument, July 21, 1988.

Retied monument, (short ties), June 12, 1998.

Retied monument, November 5, 2004.

Retied monument, August 6, 2010.