

MONUMENT 123E

CERTIFICATE OF LOCATION OF GOVERNMENT CORNER

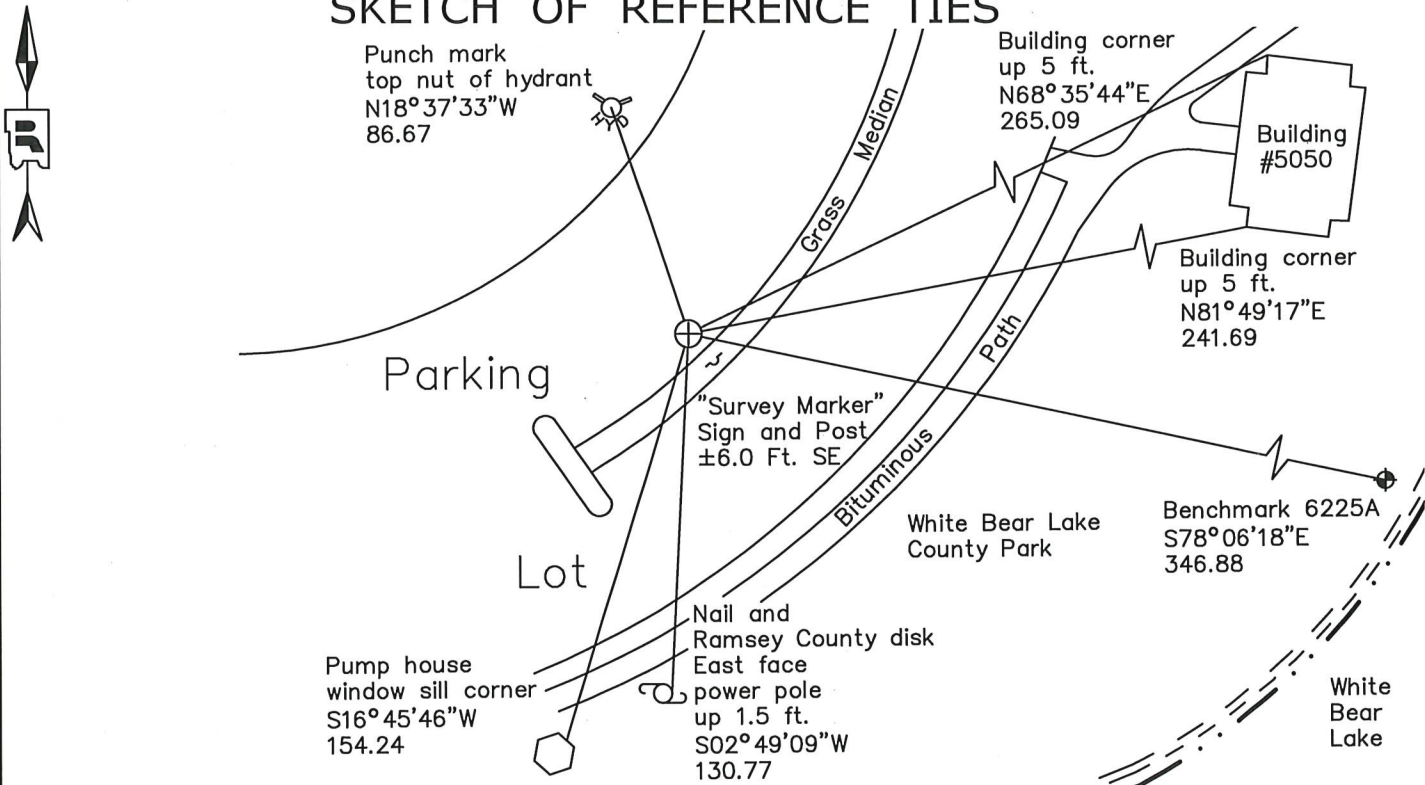
Meander Corner No. 2., Section 12, Township 30 North, Range 22 West, County of Ramsey, State of Minnesota.

At the corner location shown on the sketch

On October 19, 2021 found a broken cast iron monument and removed.

On November 10, 2021 placed a 5/8 inch by 14 inch rebar with 3 inch aluminum cap stamped " Ramsey County Surveyor".

SKETCH OF REFERENCE TIES



Monument 123E

Ramsey County

NAD83 (1986)

Northing = 210572.183

Easting = 599477.032

NAD83 (2011)

Northing = 210572.92

Easting = 599476.52

All distances are shown in U.S. Survey Feet.

Bearings are for tie reference purposes only.

Statements of evidence relative to this corner are on the following page.

I hereby certify that this survey, plan, or report was prepared by me or under my direct supervision, that I am a duly Licensed Land Surveyor under the laws of the state of Minnesota, and that this certificate is correct and complete to the best of my knowledge and belief.

Devin R. Ball 4/14/22

Devin R. Ball Date
Deputy County Surveyor
Minnesota License No. 56023

OFFICE OF COUNTY SURVEYOR
County of Ramsey

I hereby certify that this document was filed in the County Surveyor's office this 19th day of April, 20 22.

Daniel D. Baar

Daniel D. Baar
Ramsey County Surveyor
Minnesota License No. 45816

MONUMENT 123E

Meander Corner No. 2, Section 12, Township 30 North, Range 22 West

December 1, 1847	East between Sections 12 and 13. At 27.31 chains set Meander Post. Bur Oak 14 S31W 2.36 Isaac N. Higbee, Deputy Surveyor
April 14, 1899	Meander Corner No. 2 was fixed from stakes found in White Bear. Ramsey County Resurvey
November 28, 1901	Set monument. Ramsey County Resurvey
May 25, 1937	Raised monument. Ramsey County Engineer
October 1939	Checked monument. Ramsey County Engineer
February 1946	Checked monument. Ramsey County Engineer
July 19, 1974	Found granite monument, flush and re-tied. Ramsey County Surveyor's Office
September 1983	Monument was destroyed by park area construction. Set a cast iron monument. Ramsey County Surveyor's Office
February 29, 1984	Retied monument. Ramsey County Surveyor's Office
September 29, 1999	Retied monument. Ramsey County Surveyor's Office
November 5, 2004	Retied monument. Ramsey County Surveyor's Office
November 9, 2009	Retied monument. Ramsey County Surveyor's Office
May 19, 2011	Found top broken off cast iron monument due to parking lot reconstruction. Ramsey County Surveyor's Office
July 26, 2011	Checked ties to center of shaft of broken cast iron monument. Set a 4 5/8 inch cast iron monument on top of broken cast iron monument; flush in bituminous parking lot and tied. Ramsey County Surveyor's Office
August 9, 2016	Found a 4 5/8 inch cast iron monument over broken cast iron monument, flush in bituminous parking lot and inspected local ties. Ramsey County Surveyor's Office
July 24, 2020	Found a short cast iron monument over a broken cast iron monument, flush in bituminous lot and inspected local ties. Ramsey County Surveyor's Office
October 19, 2021	Found broken cast iron monument and removed prior to parking lot bituminous resurfacing. Ramsey County Surveyor's Office

MONUMENT 123E

Meander Corner No. 2, Section 12, Township 30 North, Range 22 West

November 10, 2021

Placed a 5/8 inch by 14 inch rebar with 3 inch aluminum cap stamped
"Ramsey County Surveyor" following parking lot construction.
Recorded local ties.
Ramsey County Surveyor's Office