

MONUMENT 123

CERTIFICATE OF LOCATION OF GOVERNMENT CORNER

Southwest Corner of Section 12, Township 30 North, Range 22 West, County of Ramsey, State of Minnesota.

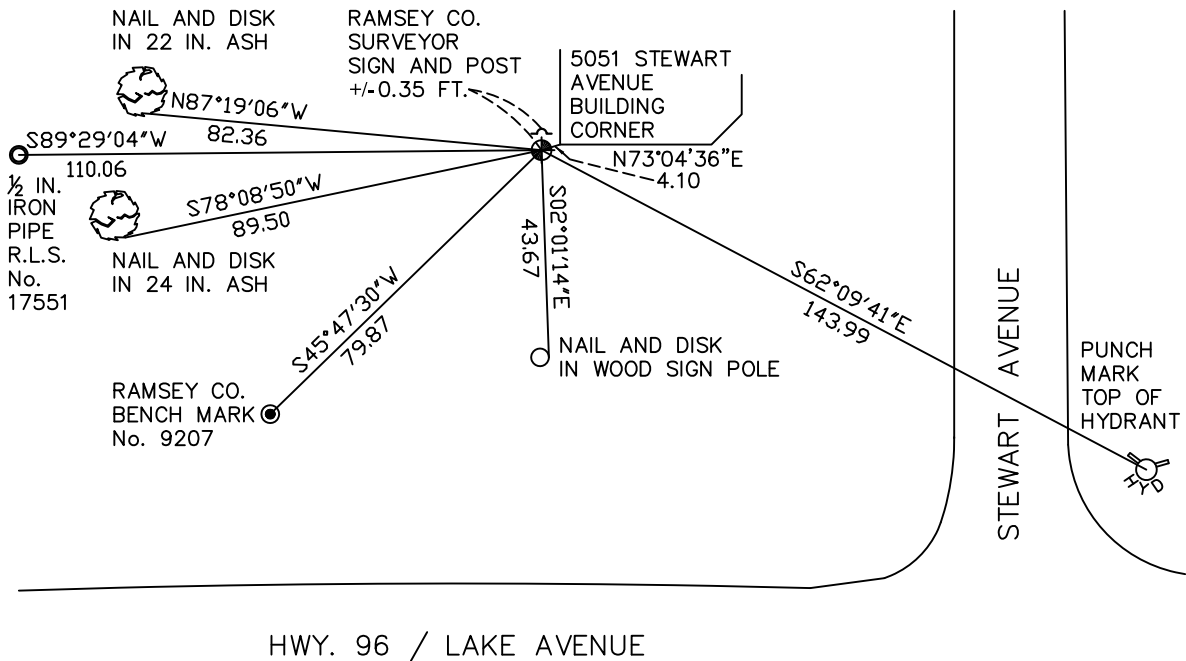
At the corner location shown on the sketch

On July 27, 2009 found a cast iron monument, down 0.5 feet.

left monument as found lowered monument removed monument (explain)

On _____ placed a _____

SKETCH OF REFERENCE TIES



RAMSEY COUNTY
NAD83 (1986)

MONUMENT 123

ALL DISTANCES ARE SHOWN IN U.S. SURVEY FEET.
BEARINGS ARE FOR TIE REFERENCE PURPOSES ONLY.

X= 597674.320 (Easting)
Y= 210559.763 (Northing)

Statements of evidence relative to this corner are on the following page(s).

I hereby certify that this document and the data contained herein was prepared by me or under my direct supervision this _____ day of _____, 20____.

SIGNATURE

Minnesota License No. _____

- County Surveyor
 Deputy County Surveyor Land Surveyor

OFFICE OF COUNTY SURVEYOR
County of Ramsey

I hereby certify that this document was filed in the County Surveyor's office on the _____ day of _____, 20____.

SIGNATURE

Michael D. Fiebiger, P.L.S.
Ramsey County Surveyor

MONUMENT 123

Found a railroad spike set by Frank Kvidera (County Highway Department); dug down 0.9 ft. and found a cracked granite monument; placed a cast iron monument over granite monument, May 17, 1974.

Retied monument, June 28, 1974.

Retied monument, February 29, 1984.

Ties checked, June 12, 1998.

Retied monument, November 5, 2004.

Retied monument, July 27, 2009.