

MONUMENT 12

CERTIFICATE OF LOCATION OF GOVERNMENT CORNER

NOTE: TWO LOCATIONS FOR THIS CORNER HAVE BEEN PERPETUATED (SEE BELOW)
 North Quarter Corner of Section 1, Township 30 North, Range 23 West, County of Ramsey, State of Minnesota.

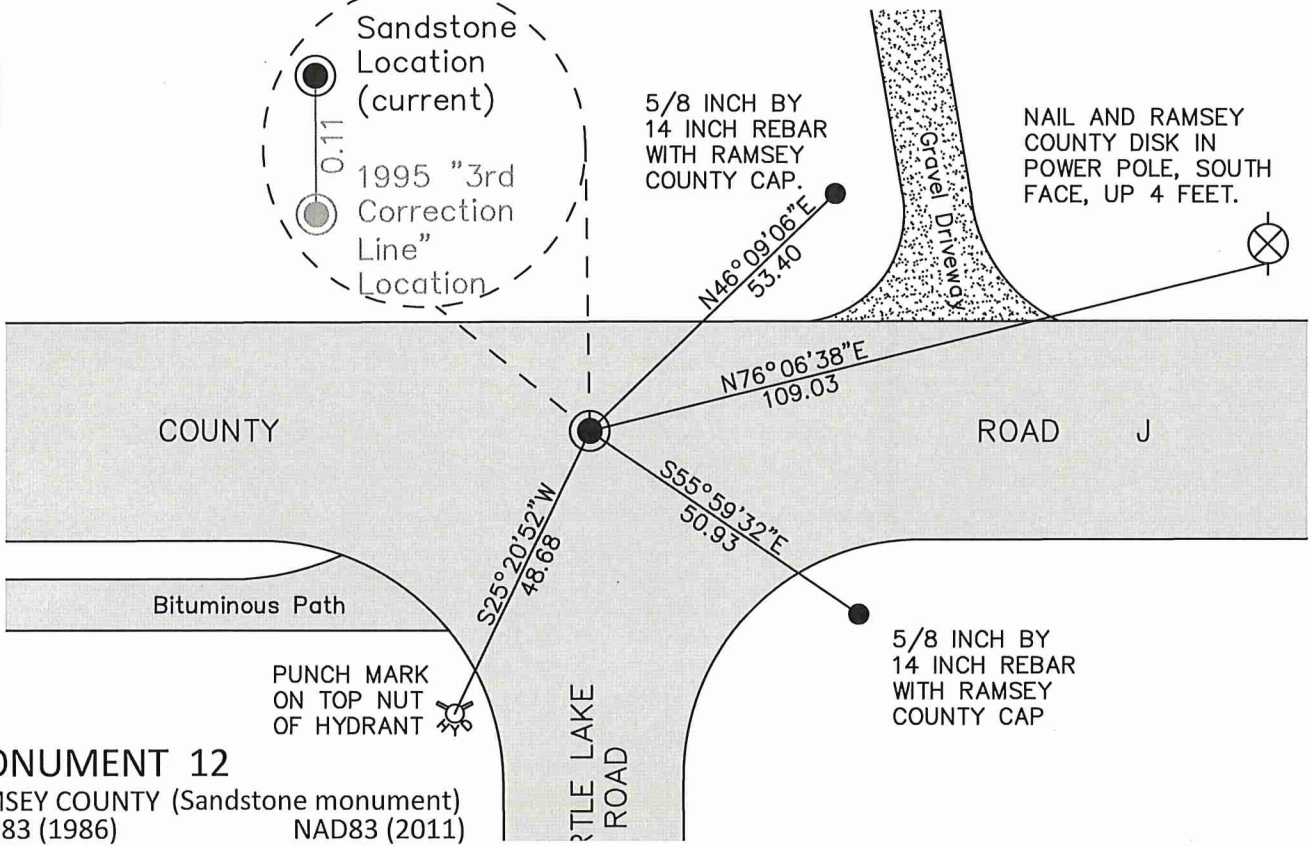
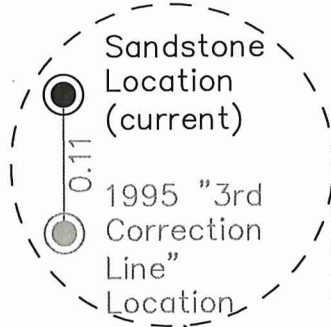
At the corner location shown on the sketch

On June 15, 2017 found a sandstone monument, down 2 feet. Tied out monument.

left monument as found raised/lowered monument removed monument (explain)

On June 15, 2017 placed a 20 inch "Ramsey County" cast iron monument
over found sandstone monument. Placed cast iron manhole assembly over cast iron monument.

SKETCH OF REFERENCE TIES



MONUMENT 12

RAMSEY COUNTY (Sandstone monument)
 NAD83 (1986) NAD83 (2011)
 Northing = 221531.871 Northing = 221532.484
 Easting = 568687.996 Easting = 568687.586

ALL DISTANCES ARE SHOWN IN U.S. SURVEY FEET.
 BEARINGS ARE FOR TIE REFERENCE PURPOSES ONLY.

Statements of evidence relative to this corner are on the following page.

I hereby certify that this survey, plan, or report was prepared by me or under my direct supervision, that I am a duly Licensed Land Surveyor under the laws of the state of Minnesota, and that this certificate is correct and complete to the best of my knowledge and belief.

Daniel D. Baar 7/6/21
 Daniel D. Baar Date
 Ramsey County Surveyor
 Minnesota License No. 45816

OFFICE OF COUNTY SURVEYOR
 County of Ramsey

I hereby certify that this document was filed in the County Surveyor's office this 6th day of July, 20 21.

Daniel D. Baar
 Daniel D. Baar, L.S.
 Ramsey County Surveyor

MONUMENT 12

North Quarter Corner of Section 1, Township 30, Range 23

December 16, 1847	At 88.08 chains, intersected 3rd Correction Line, 19 chains East of Quarter Section Corner on South line of Section 31, T 31 N, R 22 W, 4th Principal Meridian, and set post Corner to Sections 1 and 2. Tied to two bearing trees; Bur Oak, 12 S30E 28 and Bur Oak 10 S73W 34. Isaac Higbee, Deputy Surveyor
March 17, 1900	In establishing the 1/4 corner between Sections 1 and 12 found two government witness stumps. Fixed the corner and tied it. Ramsey County Re-monumentation Survey
December, 1943	Sandstone monument, down 3 feet. Checked monument. Ramsey County Engineering Office
January, 1946	Checked monument. Ramsey County Engineering Office
November, 1950	Checked monument. Ramsey County Engineering Office
March, 1952	Checked monument. Ramsey County Engineering Office
October, 1965	Checked monument. Ramsey County Engineering Office
July 27, 1972	Cast iron monument over old sandstone monument. Tied monument. Unknown Source
October 25, 1974	Found cast iron monument, down 0.1 feet. Retied monument. Ramsey County Surveyor's Office
April, 1990	Tied cast iron monument for removal during road reconstruction. Ramsey County Surveyor's Office
May 30, 1990	Removed cast iron monument. Ramsey County Surveyor's Office
September 5, 1990	Placed 20 inch cast iron monument. Ramsey County Surveyor's Office
January 27, 1993	Retied monument. Ramsey County Surveyor's Office
October 21, 1993	Cemented monument in place. Ramsey County Surveyor's Office
July 26, 1995	Removed "Closing Corner" cast iron monument. Set 20 inch cast iron monument marked "3RD CORRECTION LINE" and cemented. New monument is South of Closing Corner (sandstone location) 0.11 feet. Ramsey County Surveyor's Office
October 8, 1998	Tied "3RD CORRECTION LINE" monument. Ramsey County Surveyor's Office

MONUMENT 12

North Quarter Corner of Section 1, Township 30, Range 23

- | | |
|--------------------|--|
| June 15, 2004 | Retied "3RD CORRECTION LINE" monument. Ramsey County Surveyor's Office |
| September 21, 2009 | Retied "3RD CORRECTION LINE" monument. Ramsey County Surveyor's Office |
| April 22, 2014 | Found "3RD CORRECTION LINE" cast iron monument, down 0.01 feet. Checked ties using Certificate of Location dated September 21, 2009. Three of four ties missing. Monument will need to be retied. Ramsey County Surveyor's Office |
| May 22, 2014 | "3RD CORRECTION LINE" Monument retied. Ramsey County Surveyor's Office |
| October 19, 2015 | Performed static GPS observation on monument to obtain NAD83 (2011) coordinates. Ramsey County Surveyor's Office |
| May 10, 2017 | Tied out monument for removal during road reconstruction. Ramsey County Surveyor's Office |
| June 15, 2017 | Monument out. Dug down 2 feet and found broken sandstone monument. Uncovered all sides of monument and found a 4 inch by 8 inch sandstone monument. The middle of the monument fit very closely to the computed point for the monument. Held the middle of the monument and tied out sandstone monument. Placed a 20 inch "Ramsey County" cast iron monument over the position of the sandstone monument. Checked the ties of the new cast iron monument compared to the ties on the sandstone monument. Ties checked out. Placed a cast iron manhole assembly over the top of the cast iron monument. Ramsey County Surveyor's Office |
| June 24, 2020 | Found cast iron monument within a cast iron manhole assembly at the sandstone location, all ties accounted for. Ramsey County Surveyor's Office |