

MONUMENT 118

CERTIFICATE OF LOCATION OF GOVERNMENT CORNER

North Quarter Corner of Section 16, Township 30 North, Range 22 West, County of Ramsey, State of Minnesota.

At the corner location shown on the sketch

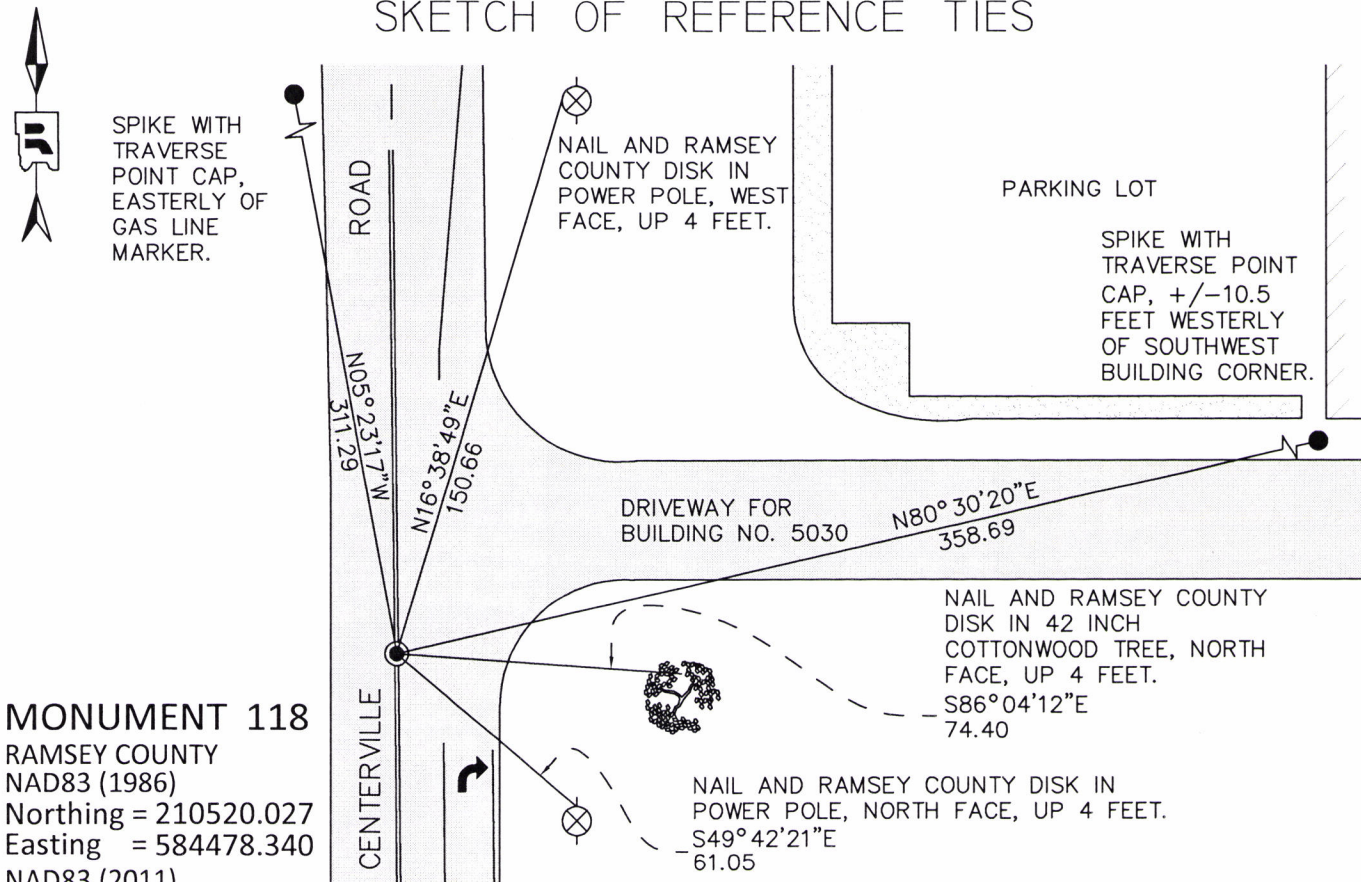
On May 8, 2017 found a cast iron monument, down 0.20 feet, in bituminous roadway.

Offset monument for removal during future road reconstruction.

left monument as found raised/lowered monument removed monument (explain)

On August 24, 2017 placed a 20 inch "Ramsey County" cast iron monument within a manhole assembly.

SKETCH OF REFERENCE TIES



MONUMENT 118
 RAMSEY COUNTY
 NAD83 (1986)
 Northing = 210520.027
 Easting = 584478.340
 NAD83 (2011)
 Northing = 210520.697
 Easting = 584477.772

ALL DISTANCES ARE SHOWN IN U.S. SURVEY FEET.
 BEARINGS ARE FOR TIE REFERENCE PURPOSES ONLY.

Statements of evidence relative to this corner are on the following page.

I hereby certify that this survey, plan, or report was prepared by me or under my direct supervision, that I am a duly Licensed Land Surveyor under the laws of the state of Minnesota, and that this certificate is correct and complete to the best of my knowledge and belief.

Daniel D. Baar 7-19-19
 Daniel D. Baar Date
 County Surveyor
 Minnesota License No. 45816

OFFICE OF COUNTY SURVEYOR
 County of Ramsey

I hereby certify that this document was filed in the County Surveyor's office this 19th day of July, 20 19.

Daniel D. Baar
 Daniel D. Baar, L.S.
 Ramsey County Surveyor

MONUMENT 118

North Quarter Corner of Section 16, Township 30 North, Range 22 West

December 7, 1847	West corrected between Sections 9 and 16 at 40.25 chains set 1/4 Section post. B oak 14 S80W 3.94. Isaac Higbee, Deputy Surveyor
November 22, 1897	The 1/4 corner between Sections 9 and 16 was fixed from old Government witness stump. Also found old stake at 1/4 corner. Retied it. Ramsey County Re-Monumentation Survey
June 30, 1898	Set monument. Ramsey County Re-Monumentation Survey
October, 1939	Checked monument. Ramsey County Engineer's Office
February, 1946	Checked monument. Ramsey County Engineer's Office
April, 1965	Checked monument. Ramsey County Engineer's Office
May 23, 1974	Found square iron (1/4 inch) down 0.3 feet. Found granite monument down 0.8 feet. Ramsey County Surveyor's Office
July 2, 1974	Retied monument. Ramsey County Surveyor's Office
May, 1989	Removed monument for construction department. Ramsey County Surveyor's Office
November 24, 1992	Reset 20 inch cast iron monument, flush. Ramsey County Surveyor's Office
January 26, 1993	Retied monument. Ramsey County Surveyor's Office
April 4, 1999	Retied monument. Ramsey County Surveyor's Office
November 30, 2004	Retied monument. Ramsey County Surveyor's Office
October 9, 2009	Found cast iron monument in bit road, down +/- 0.2 feet. Retied monument. Ramsey County Surveyor's Office
May 22, 2013	Found a cast iron monument, down 0.2 feet. Checked ties using certificate of location dated October 9, 2009. All ties present and in good condition. Ramsey County Surveyor's Office
May 9, 2016	Found cast iron monument, down 0.2 feet. Ran static GPS observation on monument to obtain NAD 83 (2011) coordinates. Ramsey County Surveyor's Office

MONUMENT 118

North Quarter Corner of Section 16, Township 30 North, Range 22 West

- | | |
|-----------------|--|
| May 8, 2017 | Set monument offsets prior to removal for road reconstruction.
Ramsey County Surveyor's Office |
| Summer, 2017 | Monument removed by contractor during road reconstruction. Exact date unknown. Ramsey County Surveyor's Office |
| August 24, 2017 | Set a 20 inch "Ramsey County" cast iron monument using monument offsets set and measured on May 8, 2017. Tied monument. Cast iron manhole assembly set by others over top of monument. Ramsey County Surveyor's Office |