

# MONUMENT 112W

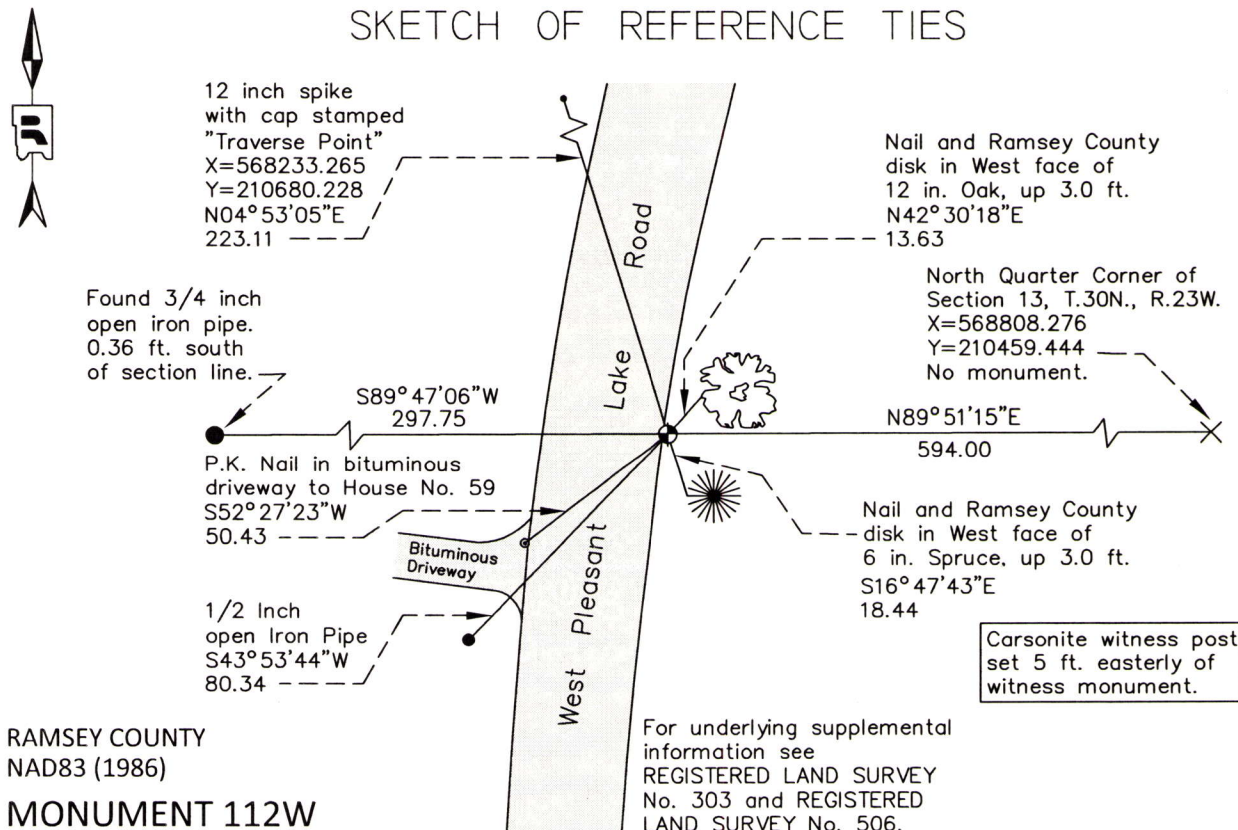
## CERTIFICATE OF LOCATION OF GOVERNMENT CORNER

Witness Monument to the North Quarter Corner of Section 13, Township 30 North, Range 23 West, County of Ramsey, State of Minnesota.

At the corner location shown on the sketch

On \_\_\_\_\_ found \_\_\_\_\_  
 left monument as found       raised/lowered monument       removed monument (explain)  
 On September 10, 2013 placed a 20 inch Ramsey County cast iron monument, down 0.3 ft.,  
594.00 feet West of the North Quarter Corner, tied monument.

### SKETCH OF REFERENCE TIES



**RAMSEY COUNTY**  
 NAD83 (1986)  
**MONUMENT 112W**  
 X= 568214.278 (Easting)  
 Y= 210457.931 (Northing)

For underlying supplemental  
 information see  
 REGISTERED LAND SURVEY  
 No. 303 and REGISTERED  
 LAND SURVEY No. 506.

ALL DISTANCES ARE SHOWN IN U.S. SURVEY FEET.  
 BEARINGS ARE FOR TIE REFERENCE PURPOSES ONLY.

Statements of evidence relative to this corner are on the following page.

I hereby certify that this document was prepared by me or under my direct supervision and that I am a duly Licensed Land Surveyor under the laws of the State of Minnesota.

Daniel D. Baar      12-12-14  
 Daniel D. Baar      Date  
 Minnesota License No. 45816

County Surveyor       Land Surveyor  
 Deputy County Surveyor

OFFICE OF COUNTY SURVEYOR  
 County of Ramsey

I hereby certify that this document was filed in the  
 County Surveyor's office this 12th day of  
December, 2014.

Craig W. Hinzman  
 Craig W. Hinzman, L.S.  
 Ramsey County Surveyor

## MONUMENT 112W

Witness Monument to the North Quarter Corner of Section 13, Township 30 North, Range 23 West

Set Quarter Section post, B. Oak 20 S15°W 27, "Do" (B. Oak) 10 N35°W40, December 8, 1847.

Quarter Corner between Section 12 and Section 13, found Government Witness stumps, Gates A. Johnson, July 20, 1896.

The Quarter Corner between Sections 12 and 13 was fixed from two old Government witness stumps; also found old stake at corner, May 11, 1897.

Set monument, August 9, 1897.

Distance between the Northwest Corner and the North Quarter Corner of Section 13 was measured, August 18, 1932.

Found granite monument at North Quarter Corner location, by Les Edlund and crew, November 14, 1949.

Notes from "Property Survey of North Oaks" for Section 13, T. 30, R. 23, show a granite monument at North Quarter Corner location, February 1, 1950.

Registered Land Survey No. 303 shows an iron monument at the North Quarter Corner location, January 5, 1976.

Found iron and tied; may have been set by Milner W. Carley and Associates, April 14, 1987.

Registered Land Survey No. 506 shows a 1/2 inch iron pipe at the North Quarter Corner location, January 13, 1993.

Found capped iron laying down. New house was built, September 27, 2001.

Corner location falls in the side yard of a private residence. Performed a search for existing corner monument and local ties. Found none. Set a 20 inch "RAMSEY COUNTY" cast iron monument as a witness monument, 594.00 ft. West of the North Quarter Corner and on line between the coordinate position of the North Quarter Corner and the Northwest Corner of Section 13; tied out Witness monument, September 9, 2013.

Set Carsonite witness post 5.0 ft. easterly of monument, September 17, 2013.