

# MONUMENT 111

## CERTIFICATE OF LOCATION OF GOVERNMENT CORNER

Southeast Corner of Section 11, Township 30 North, Range 23 West, County of Ramsey, State of Minnesota.

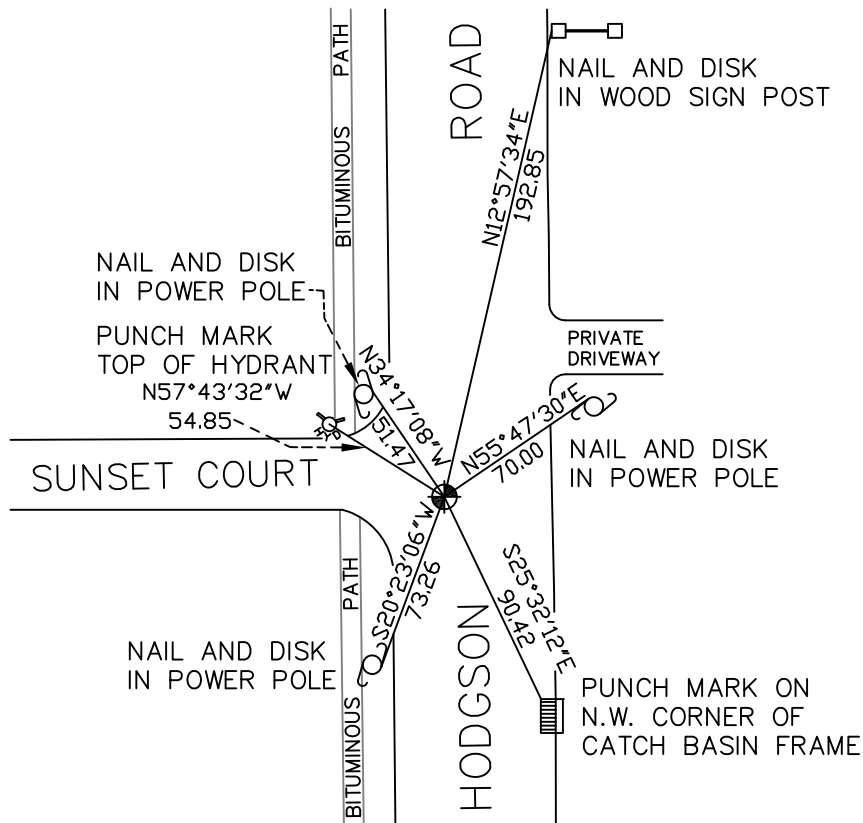
At the corner location shown on the sketch

On October 3, 2008 found a cast iron monument within a cast iron manhole assembly.

left monument as found     lowered monument     removed monument (explain)

On \_\_\_\_\_ placed a \_\_\_\_\_

### SKETCH OF REFERENCE TIES



RAMSEY COUNTY  
NAD83 (1986)  
MONUMENT 111

X= 566162.369 (Easting)  
Y= 210452.701 (Northing)

ALL DISTANCES ARE SHOWN IN U.S. SURVEY FEET.  
BEARINGS ARE FOR TIE REFERENCE PURPOSES ONLY.

Statements of evidence relative to this corner are on the following page(s).

I hereby certify that this document and the data contained herein was prepared by me or under my direct supervision this \_\_\_\_\_ day of \_\_\_\_\_, 20\_\_\_\_.

SIGNATURE

Minnesota License No. \_\_\_\_\_

- County Surveyor  
 Deputy County Surveyor     Land Surveyor

OFFICE OF COUNTY SURVEYOR  
County of Ramsey

I hereby certify that this document was filed in the County Surveyor's office on the \_\_\_\_ day of \_\_\_\_\_, 20\_\_\_\_.

David D. Claypool, P.L.S., County Surveyor

By \_\_\_\_\_, Deputy

# MONUMENT 111

Found a granite monument down 0.5 ft.; set a short (4 5/8 in.) cast iron monument, July 25, 1975.

Tied monument, March, 1976.

Retied monument, February 14, 1992.

Retied monument, June 15, 2001.

Set a P.K. nail to reset monument and tied out position, September 24, 2002.

Set a 20 in. cast iron monument and 12 in. diameter pipe; contractor to set cast iron manhole assembly, September 27, 2002.

Retied monument, October 3, 2008.