

MONUMENT 109E

CERTIFICATE OF LOCATION OF GOVERNMENT CORNER

Meander Corner No. 12 of Section 14, Township 30 North, Range 23 West, County of Ramsey, State of Minnesota.

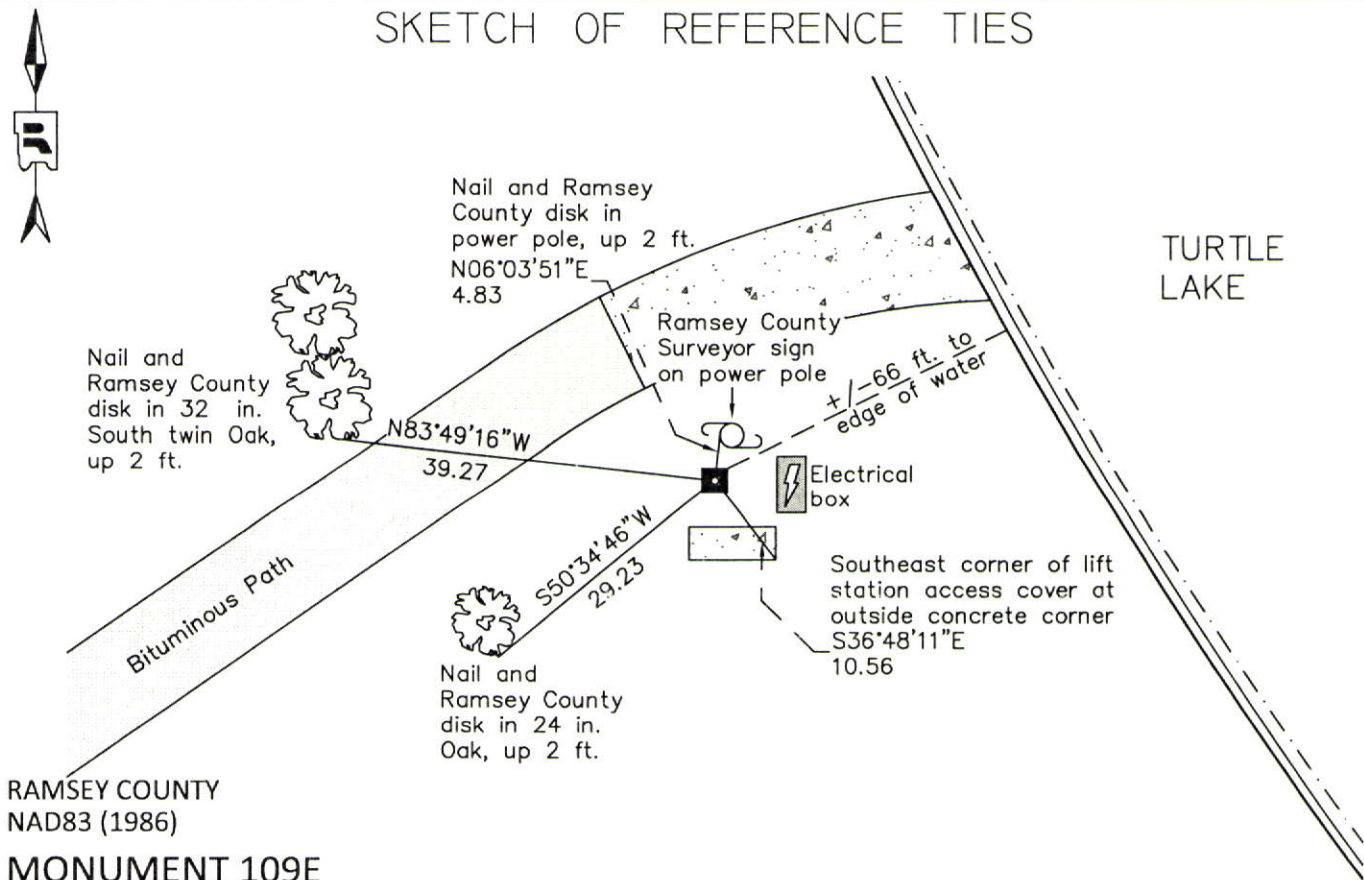
At the corner location shown on the sketch

On May 25, 2012 found an 8 in. x 8 in. granite monument with drill hole within a cast iron manhole assembly.

left monument as found raised/lowered monument removed monument (explain)

On _____ placed a _____

SKETCH OF REFERENCE TIES



RAMSEY COUNTY
NAD83 (1986)

MONUMENT 109E

X= 561846.777 (Easting)
Y= 210399.115 (Northing)

ALL DISTANCES ARE SHOWN IN U.S. SURVEY FEET.
BEARINGS ARE FOR TIE REFERENCE PURPOSES ONLY.

Statements of evidence relative to this corner are on the following page.

I hereby certify that this document was prepared by me or under my direct supervision and that I am a duly Licensed Land Surveyor under the laws of the State of Minnesota.

Daniel D. Baar 12-30-14
Daniel D. Baar Date
Minnesota License No. 45816

County Surveyor Land Surveyor
 Deputy County Surveyor

OFFICE OF COUNTY SURVEYOR
County of Ramsey

I hereby certify that this document was filed in the County Surveyor's office this 30th day of December, 20 14.

Craig W. Hinzman
Craig W. Hinzman, L.S.
Ramsey County Surveyor

MONUMENT 109E

Meander Corner No. 12 of Section 14, Township 30 North, Range 23 West

Over Lake set post, Bur Oak 15 N40°W 53, W. Oak 20 S80°W 47,
December 16th, 1847.

Meander Corner No. 12 was fixed and found one Government witness stump,
May 7, 1897.

Set Monument May 28, 1897.

Reset a granite monument, May 27, 1948.

Found a granite monument down 7 in.; placed a cast iron cap monument, June, 1975.

Tied monument, July 29, 1975.

Cast iron cap monument removed, January 16, 1987.

Cast iron manhole assembly placed over granite monument, October 2, 2002.

Retied monument, November 22, 2002.

Retied monument, July 10, 2007.

Checked condition of granite monument within a manhole assembly and ties,
May 25, 2012.