

# MONUMENT 107

## CERTIFICATE OF LOCATION OF GOVERNMENT CORNER

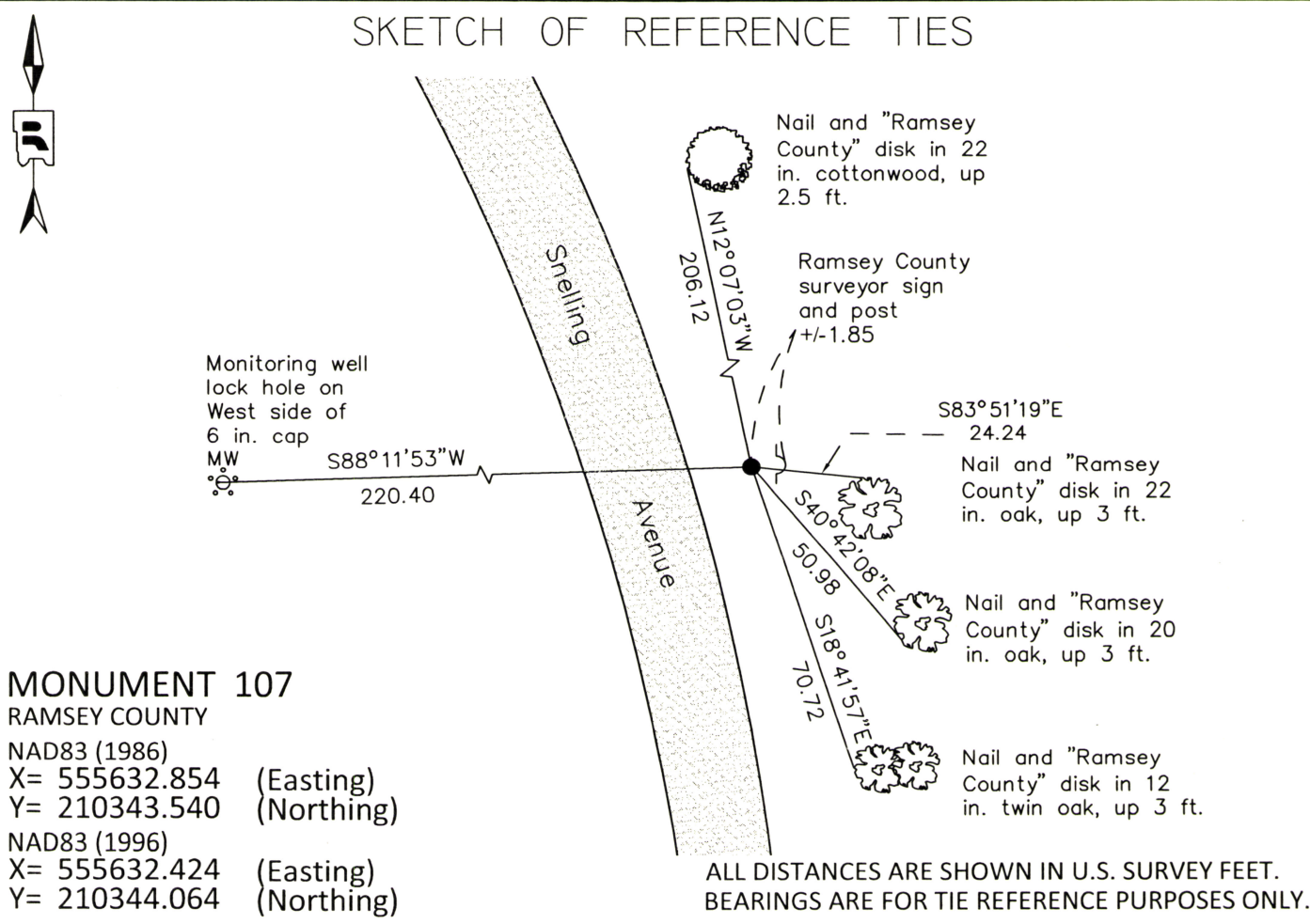
Northeast Corner of Section 16, Township 30 North, Range 23 West, County of Ramsey, State of Minnesota.

At the corner location shown on the sketch

On June 17, 2014 found a 1 1/4 inch solid iron rod, down 0.1 feet.

left monument as found       raised/lowered monument       removed monument (explain)

On \_\_\_\_\_ placed a \_\_\_\_\_



Statements of evidence relative to this corner are on the following page.

<p>I hereby certify that this survey, plan, or report was prepared by me or under my direct supervision, that I am a duly Licensed Land Surveyor under the laws of the state of Minnesota, and that this certificate is correct and complete to the best of my knowledge and belief.</p> <p style="text-align: right;"><u>Daniel D. Baar</u>      <u>7-18-17</u>                  Daniel D. Baar      Date                  Deputy County Surveyor                  Minnesota License No. 45816</p>	<p style="text-align: center;">OFFICE OF COUNTY SURVEYOR                  County of Ramsey</p> <p>I hereby certify that this document was filed in the County Surveyor's office this <u>18th</u> day of <u>July</u>, 20 <u>17</u>.</p> <p style="text-align: center;"><u>Craig W. Hinzman</u>                  Craig W. Hinzman, L.S.                  Ramsey County Surveyor</p>
---	---



# MONUMENT 107

Northeast Corner of Section 16, Township 30 North, Range 23 West

December 16, 1847	Set post Corner to Sections 9, 10, 13, and 16. (Bur Oak 20 N30E 59; White Oak 13 S33W 20) Isaac Higbee, Deputy Surveyor
May 17, 1896	In Establishing the Northeast Corner of Section 16, found old Gov. witness stump. Fixed Corner and tied it. Ramsey County Remonumentation Survey
October 28, 1897	Set Monument. Ramsey County Remonumentation Survey
July 16, 1942	The United States of America acquired 2,425 acres, more or less, for an ammunition plant per document number A04501182. The Northeast Corner of Section 16 is located within the acquisition area.
July, 1961	Re-established position and set new iron corner - Twin Cities Arsenal Reservation Map dated January 20, 1942, last revised July 27, 1973.
August, 1991	Found 1 inch solid iron, flush, off shoulder of road, Ramsey County Surveyor's Office.
August 20, 1991	Tied monument, Ramsey County Surveyor's Office.
August 26, 1991	Placed sign and post +/-2 feet east of monument, Ramsey County Surveyor's Office.
April 3, 2001	Retied monument, Ramsey County Surveyor's Office.
March 9, 2005	Retied monument, Ramsey County Surveyor's Office.
September 13, 2010	Retied monument, Ramsey County Surveyor's Office.
June 17, 2014	Checked monument and ties conditions. Established NAD83 (1996 Adjusted) coordinates on the monument. Work was performed as part of County Surveyor's Office survey project in Sections 9 and 16 in support of the redevelopment of former TCAAP property. Coordinates established utilizing historic traverse data, complimenting current traverse data and GPS measurements, all analyzed and adjusted by least squares. Ramsey County Surveyor's Office.