

MONUMENT 106

CERTIFICATE OF LOCATION OF FOUND MONUMENT

North Quarter Corner of Section 16, Township 30 North, Range 23 West, County of Ramsey, State of Minnesota.

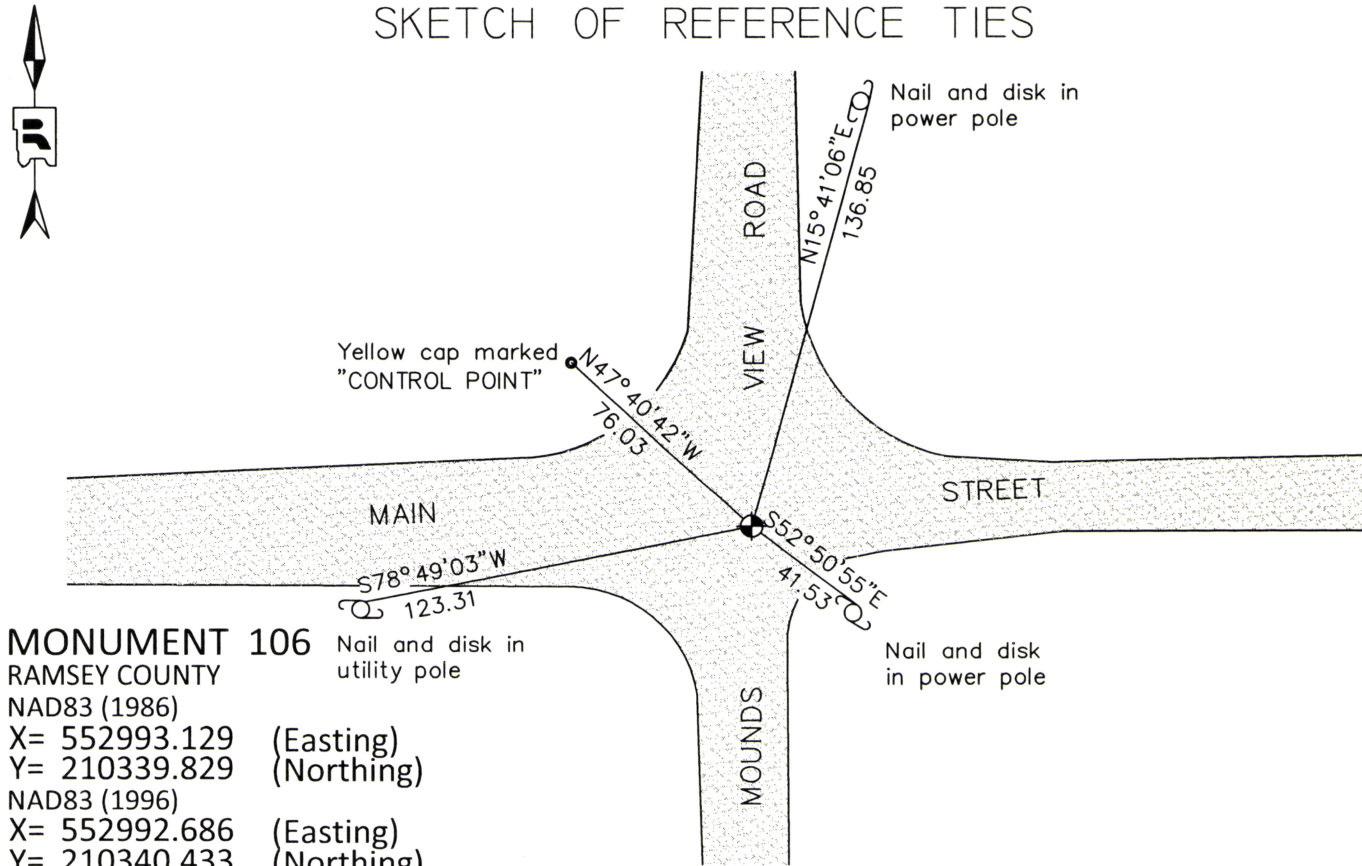
At the corner location shown on the sketch

On June 17, 2014 found a cast iron monument, down 0.05 feet.

left monument as found raised/lowered monument removed monument (explain)

On _____ placed a _____

SKETCH OF REFERENCE TIES



MONUMENT 106 Nail and disk in utility pole
 RAMSEY COUNTY
 NAD83 (1986)
 X= 552993.129 (Easting)
 Y= 210339.829 (Northing)
 NAD83 (1996)
 X= 552992.686 (Easting)
 Y= 210340.433 (Northing)
 NAD83 (2011)
 X= 552992.722 (Easting)
 Y= 210340.446 (Northing)

ALL DISTANCES ARE SHOWN IN U.S. SURVEY FEET.
 BEARINGS ARE FOR TIE REFERENCE PURPOSES ONLY.

Statements of evidence relative to this corner are on the following page.

I hereby certify that this survey, plan, or report was prepared by me or under my direct supervision, that I am a duly Licensed Land Surveyor under the laws of the state of Minnesota, and that this certificate is correct and complete to the best of my knowledge and belief.

Daniel D. Baar 7-17-17
 Daniel D. Baar Date
 Deputy County Surveyor
 Minnesota License No. 45816

OFFICE OF COUNTY SURVEYOR
 County of Ramsey

I hereby certify that this document was filed in the County Surveyor's office this 17th day of July, 20 17.

Craig W. Hinzman
 Craig W. Hinzman, L.S.
 Ramsey County Surveyor

MONUMENT 106

North Quarter Corner of Section 16, Township 30 North, Range 23 West

December 16, 1847	Set Quarter Section post (Bur Oak 12 S77E 2.12; Bur Oak 7 N66W 1.48) Isaac Higbee, Deputy Surveyor
May 28, 1898	In Establishing the 1/4 Corner between Sections 9 and 16, Ran straight line from Corner to Corner and fixed 1/4 Corner 1/2 way. Gov. trees gone. Ramsey County Remonumentation Survey
June 18, 1898	Set Monument. Ramsey County Remonumentation Survey
January 4, 1941	Granite monument shown on recorded plat of BROOK LAND ACRES, RAMSEY CO., MINN.
July 16, 1942	The United States of America acquired 2,425 acres, more or less, for an ammunition plant per document number A04501182. The North 1/4 Corner of Section 9 is located within the acquisition area.
August 21, 1991	Found a 3/4 inch x 24 inch long rod inside of a 1 inch x 12 inch long pipe. Dug down 2.3 feet, encountered 1 1/2 inches to 2 inches gravel all the way {sic}. Placed a 20 inch cast iron monument flush and tied. Ramsey County Surveyor's Office
April 3, 2001	Retied monument. Ramsey County Surveyor's Office
March 9, 2005	Retied monument. Ramsey County Surveyor's Office
September 15, 2010	Retied monument. Ramsey County Surveyor's Office
April 16, 2013	Performed a 50 minute static GPS observation and post-processed data using OPUS to establish NAD83 (2011 Adjusted) coordinates on monument. Ramsey County Surveyor's Office
June 17, 2014	Checked monument and tie conditions. Established NAD83 (1996 Adjusted) coordinates on the cast iron monument. Work was performed as part of County Surveyor's Office survey project in Sections 9 and 16 in support of the redevelopment of former TCAAP property. Coordinates established utilizing historic traverse data, complimenting current traverse data and GPS measurements, all analyzed and adjusted by least squares. Ramsey County Surveyor's Office.