

MONUMENT 105

CERTIFICATE OF LOCATION OF GOVERNMENT CORNER

Northeast Corner of Section 17, Township 30 North, Range 23 West, County of Ramsey, State of Minnesota.

At the corner location shown on the sketch

On July 10, 2014 found a cast iron monument in grass area, flush. Found cast iron monument
is a witness to the Northeast Corner of Section 17, T.30N., R.23W.

left monument as found raised/lowered monument removed monument (explain)

On _____ placed a _____

SKETCH OF REFERENCE TIES

RAMSEY COUNTY COORDINATES

105W (Witness Monument)
 NAD83 (1986) * See pg 2 for note about the previously published inaccurate coordinates
 X = 550288.551 (Easting)
 Y = 210338.707 (Northing)

NAD83 (1996)
 X = 550288.091 (Easting)
 Y = 210339.346 (Northing)

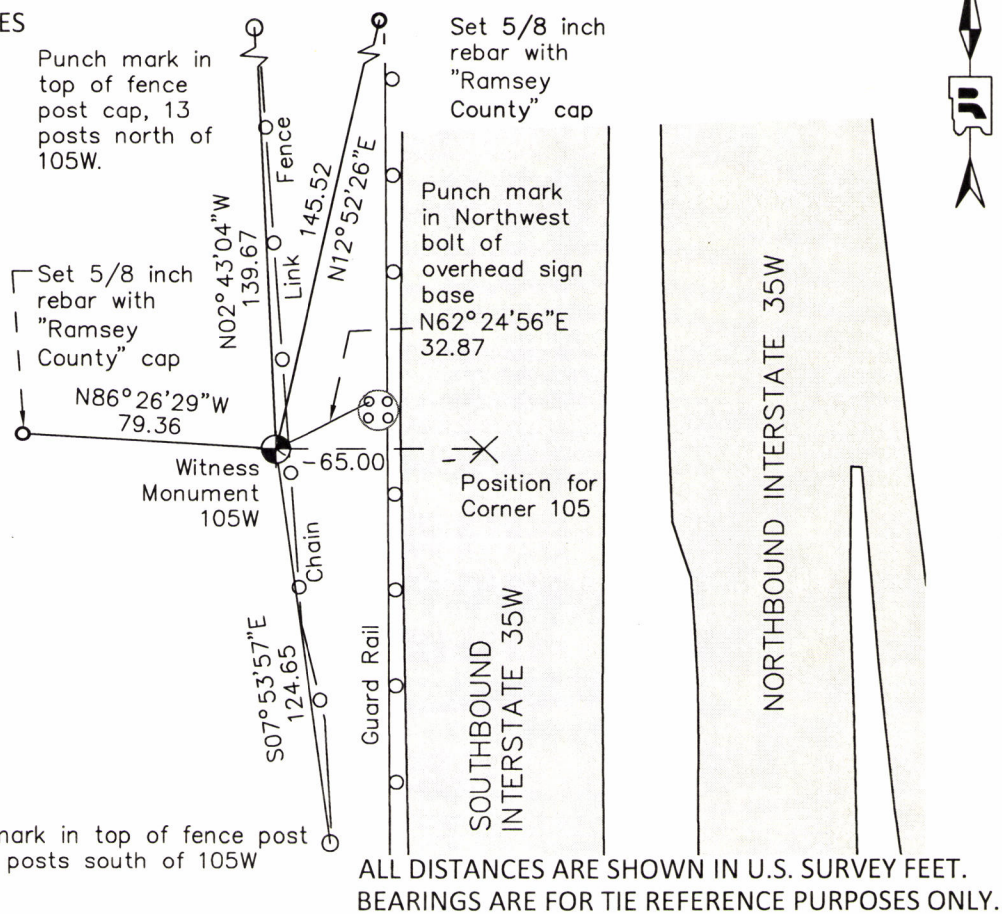
NAD83 (2011)
 X = 550288.107 (Easting)
 Y = 210339.382 (Northing)

105 (Section Corner Position)

NAD83 (1986)
 X = 550353.523 (Easting)
 Y = 210338.671 (Northing)

NAD83 (1996)
 X = 550353.087 (Easting)
 Y = 210339.320 (Northing)

NAD83 (2011)
 X = 550353.107 (Easting)
 Y = 210339.359 (Northing)



Punch mark in top of fence post cap, 13 posts south of 105W

ALL DISTANCES ARE SHOWN IN U.S. SURVEY FEET.
 BEARINGS ARE FOR TIE REFERENCE PURPOSES ONLY.

Statements of evidence relative to this corner are on the following page.

I hereby certify that this survey, plan, or report was prepared by me or under my direct supervision, that I am a duly Licensed Land Surveyor under the laws of the state of Minnesota, and that this certificate is correct and complete to the best of my knowledge and belief.

Daniel D. Baar
 Daniel D. Baar Date
 Deputy County Surveyor
 Minnesota License No. 45816

OFFICE OF COUNTY SURVEYOR
 County of Ramsey

I hereby certify that this document was filed in the County Surveyor's office this 13th day of October, 20 16.

Craig W. Hinzman
 Craig W. Hinzman, L.S.
 Ramsey County Surveyor

MONUMENT 105

Northeast Corner of Section 17, Township 30 North, Range 23 West

December 16, 1847	Set post Corner to Sections 8, 9, 16, and 17 (Bur Oak 12 S44W 83; Bur Oak 10 S57E 1.07). Isaac Higbee, Deputy Surveyor
May 26, 1898	Established the Northeast Corner of Section 17. (Notes from the 1898 re-monumentation survey do not state how this corner was re-established.) Ramsey County re-monumentation survey
June 18, 1898	Set monument. Ramsey County re-monumentation survey
February 21, 1929	Found an 8 inch by 8 inch square stone monument and replaced it with a brass plug in the concrete pavement. Set two 6 inch by 6 inch concrete reference monuments. Certificate of location filed with the Ramsey County Recorder's Office as document number 775806. Minnesota State Highway Commission
January 19, 1942	Date of the certification by F. Armstrong of a "Reservation Map" of the Twin Cities Arsenal that shows a brass plug at corner location.
November, 1943	Monument visited. Ramsey County Engineer's Office
February, 1954	Monument visited. Ramsey County Engineer's Office
July 8, 1963	Tied stone monument. Minnesota Highway Department
September 22, 1965	Tied brass plug monument. Minnesota Highway Department
December, 1973	Minnesota Highway Department set a cast iron monument to witness the Northeast Corner of Section 17 65.00 Feet West on line. Minnesota Highway Department
April 10, 1986	Found a brass plug in south bound lane of I-35W and a cast iron monument 65.00 ft. west on Section line. Ramsey County Surveyor's Office.
July 10, 2014	Found and tied a cast iron witness monument flush in west ditch of Interstate Highway 35W Southbound. The cast iron witness monument was recovered as part of a boundary survey of the Twin Cities Army Ammunition Plant property. In the process of this work an error was discovered in the coordinates that were published for this section corner in 1991. The incorrect coordinates were: N: 210338.307 E: 550353.563. The physical location of the monument did not change; the error was caused by using the slope distance from a traverse point to derive the coordinates of the monument. The corrected coordinates (1986 adjusted) are: N:210338.671 E: 550353.523 Ramsey County Surveyor's Office.