

MONUMENT 100

CERTIFICATE OF LOCATION OF GOVERNMENT CORNER

East Quarter Corner of Section 12, Township 30 North, Range 22 West, County of Ramsey, State of Minnesota.

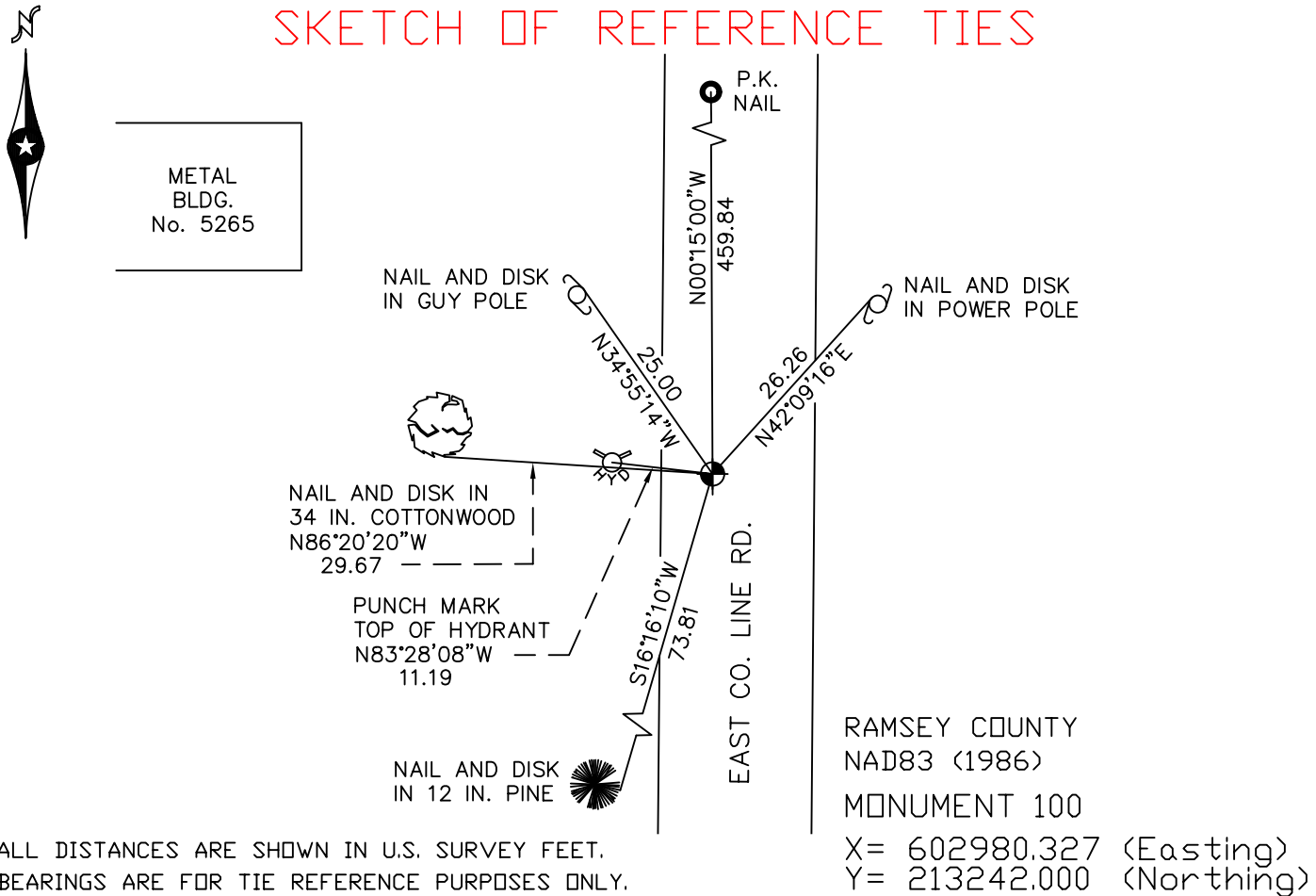
At the corner location shown on the sketch

On November 10, 2009 found a Washington County cast iron monument,
down 0.2 feet.

left monument as found lowered monument removed monument (explain)

On _____ placed a _____

SKETCH OF REFERENCE TIES



RAMSEY COUNTY
NAD83 (1986)
MONUMENT 100
X= 602980.327 (Easting)
Y= 213242.000 (Northing)

ALL DISTANCES ARE SHOWN IN U.S. SURVEY FEET.
BEARINGS ARE FOR TIE REFERENCE PURPOSES ONLY.

Statements of evidence relative to this corner are on the following page(s).

I hereby certify that this document and the data contained herein was prepared by me or under my direct supervision this _____ day of _____, 20____.

SIGNATURE

Minnesota License No. _____

- County Surveyor
 Deputy County Surveyor Land Surveyor

OFFICE OF COUNTY SURVEYOR
County of Ramsey

I hereby certify that this document was filed in the County Surveyor's office on the _____ day of _____, 20____.

SIGNATURE

Michael D. Fiebiger, P.L.S.
Ramsey County Surveyor

MONUMENT 100

Granite monument originally set, October, 1897.

Monument moved, August, 1905, as shown in survey book "N", page 21, filed in Ramsey County Public Works file room.

Found granite monument, flush with road surface, retied, July 18, 1974.

Granite monument destroyed by 1981 sewer construction; placed P.K. nail and retied, May 19, 1982.

Placed a 20 in. cast iron monument, January 11, 1983.

Retied "Washington County" cast iron monument; witness post and sign, +/-15 ft. west of monument, December 4, 1992.

Ties checked, June 12, 1998.
(tie to metal building not checked)

Retied monument, October 12, 2004.
(tie to metal building not checked)

Retied monument, November 10, 2009