

# MONUMENT 1

## CERTIFICATE OF LOCATION OF GOVERNMENT CORNER

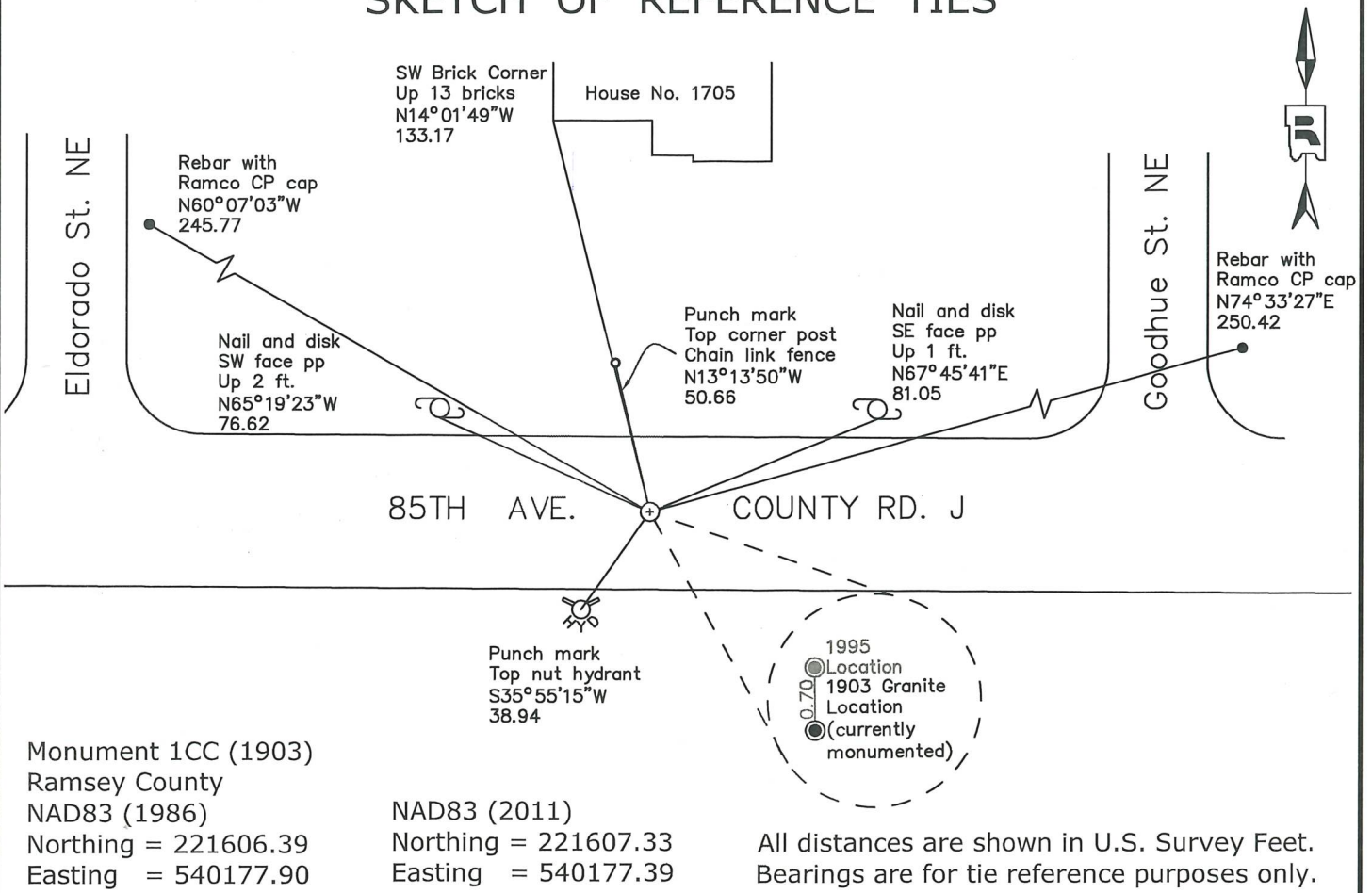
NOTE: Two positions for this corner have been perpetuated (see below)  
 Northwest Corner of Section 6, Township 30 North, Range 23 West, County of Ramsey,  
 State of Minnesota.

At the corner location shown on the sketch

On July 13, 2021 found a cast iron monument at the closing corner position.

On September 27, 2021 placed a 5/8 inch by 14 inch rebar with 3 inch aluminum cap stamped "Ramsey County Surveyor" at the closing corner position.

### SKETCH OF REFERENCE TIES



Statements of evidence relative to this corner are on the following page.

I hereby certify that this survey, plan, or report was prepared by me or under my direct supervision, that I am a duly Licensed Land Surveyor under the laws of the state of Minnesota, and that this certificate is correct and complete to the best of my knowledge and belief.

Stephane J. Robert  
 Deputy County Surveyor  
 Minnesota License No. 42642

4-29-2024  
 Date

OFFICE OF COUNTY SURVEYOR  
 County of Ramsey

I hereby certify that this document was filed in the County Surveyor's office this 29<sup>th</sup> day of April, 20 24.

Daniel D. Baar  
 Daniel D. Baar  
 Ramsey County Surveyor  
 Minnesota License No. 45816

# MONUMENT 1

Northwest Corner of Section 6, Township 30, Range 23

October 18, 1847	Between Ranges 23 and 24W, North between Sections 1 and 6. At 92.72 chains, intersect 3rd Correction Line 10 chains West of the corner to Sections 32 and 33 of Township 31 North, Range 23 West and established corner. Bur Oak 16 S.8W. 167 Bur Oak 14 S.29E. 356 James M. Marsh, Deputy Surveyor
January 7, 1903	In establishing the N.W. Corner of Section 6 found Stone Monument marked T30 R24 S1 at corner of fences. No Gov't ties. Ramsey County Resurvey
May 31, 1938	AUDITOR'S SUBDIVISION NO. 89 shows a Stone Monument at the NW corner. Harry S. Bronson, Ramsey County Surveyor
November 1943	Checked granite monument. Ramsey County Engineer's Office
January 1946	Checked granite monument. Ramsey County Engineer's Office
November 1950	Checked granite monument. Ramsey County Engineer's Office
March 1952	Checked granite monument. Ramsey County Engineer's Office
October 1965	Checked granite monument. Ramsey County Engineer's Office
May 4, 1975	Found iron at surface. Dug down and found a granite monument, down 7.5 inches. Ramsey County Surveyor's Office
July 7, 1975	Placed a short (4 $\frac{3}{8}$ inch) cast iron monument. Ramsey County Surveyor's Office
July 29, 1975	Re-tied monument. Ramsey County Surveyor's Office
April 22, 1991	Short cast iron monument removed for construction. Ramsey County Surveyor's Office
1991	Granite monument most likely removed due to muck excavation at the corner location during County Road J Road Project 28-108 reconstruct. Ramsey County Engineer's Office
September 3, 1991	Relocated corner position, set 4 P.K. nails. (1903 Position) Ramsey County Surveyor's Office
November 15, 1991	Set 20 inch cast iron monument in concrete. (1903 Position) Ramsey County Surveyor's Office
July 28, 1995	Set 20 inch cast iron monument (1SC), marked "3RD CORRECTION LINE", 0.70 feet north of original granite monument location (1CC). Ramsey County Surveyor's Office

# MONUMENT 1

Northwest Corner of Section 6, Township 30, Range 23

June 20, 1996	Tied monument 1SC. Ramsey County Surveyor's Office
June 2004	Retied monument 1SC. Ramsey County Surveyor's Office
September 2, 2009	Retied monument 1SC. Ramsey County Surveyor's Office
April 22, 2014	Found a cast iron monument, flush with road at the 1SC position and inspected local ties. Ramsey County Surveyor's Office
June 24, 2020	Found a cast iron monument at the 1SC position and inspected local ties. Ramsey County Surveyor's Office
July 13, 2021	Found a cast iron monument at the 1CC (1903) position and the 1SC (1995) position. Established offsets and checked local ties for the 1CC (1903) position prior to removal of both cast iron monuments during road construction. Ramsey County Surveyor's Office
September 27, 2021	At the 1CC (1903) position, placed a $\frac{5}{8}$ inch by 14 inch rebar with 3 inch aluminum cap stamped "Ramsey County Surveyor" in bituminous road following road construction using offsets. Recorded local ties. Ramsey County Surveyor's Office