

MONUMENT 443

CERTIFICATE OF LOCATION OF GOVERNMENT CORNER

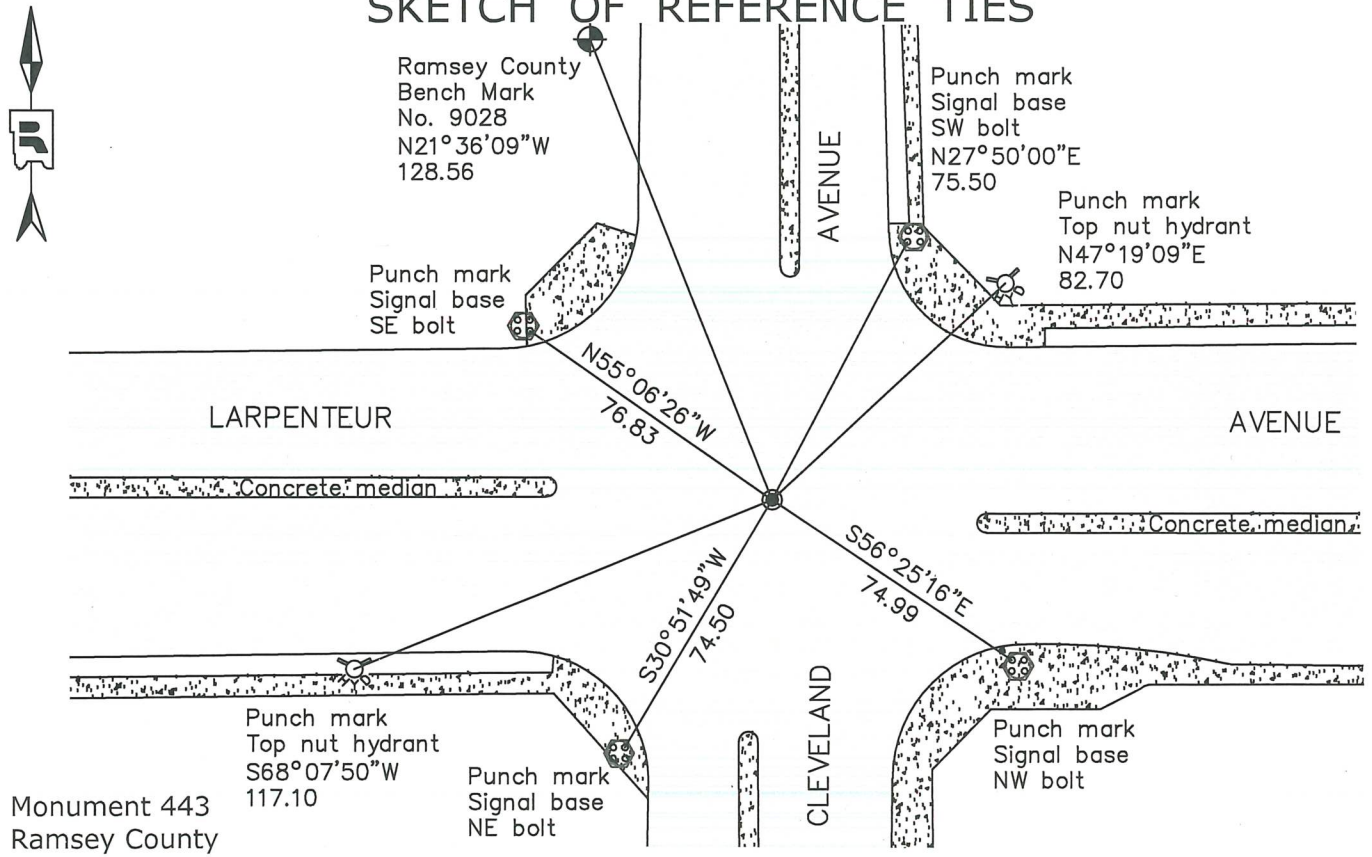
Northeast Corner of Section 20, Township 29 North, Range 23 West, County of Ramsey,
State of Minnesota.

At the corner location shown on the sketch

On November 20, 2025 found a cast iron monument within a cast iron manhole assembly.

On _____ placed a _____

SKETCH OF REFERENCE TIES



Monument 443
Ramsey County
NAD83 (1986)

Northing = 173198.97
Easting = 550760.19

NAD83 (2011)

Northing = 173199.54
Easting = 550759.84

All distances are shown in U.S. Survey Feet.
Bearings are for tie reference purposes only.

Statements of evidence relative to this corner are on the following page.

I hereby certify that this survey, plan, or report was prepared by me or under my direct supervision, that I am a duly Licensed Land Surveyor under the laws of the state of Minnesota, and that this certificate is correct and complete to the best of my knowledge and belief.

Devin R. Ball 3/3/26

Devin R. Ball Date
Deputy County Surveyor
Minnesota License No. 56023

OFFICE OF COUNTY SURVEYOR
County of Ramsey

I hereby certify that this document was filed in the County Surveyor's office this 11th day of March, 2026.

Daniel D. Baar

Daniel D. Baar
Ramsey County Surveyor
Minnesota License No. 45816

MONUMENT 443

Northeast Corner of Section 20, Township 29 North, Range 23 West

November 3, 1847	Set post Corner to Sections 16, 17, 20 & 21 Bur Oak 20 S39°W 83 Bur Oak 14 N51°W 33 Isaac N. Higbee, Deputy Surveyor
January, 1889	Monument set by R.J. Johnson. City of Saint Paul Surveyor
February, 1934	Tied granite monument. City of Saint Paul Surveyor
June 22, 1976	Found iron flush. Ramsey County Surveyor's Office
March 25, 1991	Found a $\frac{3}{4}$ in. iron pipe at grade, and tied. City of Saint Paul Surveyor
April 1997	Construction Department destroyed monument. Ramsey County Surveyor's Office
July 30, 1997	Set a 20 in. cast iron monument +/- 14 in. below finished grade. Contractor to set 12 in. PVC pipe and cast iron manhole assembly over monument. Ramsey County Surveyor's Office
March 23, 2001	Tied monument. Ramsey County Surveyor's Office
September 5, 2007	Retied monument. Ramsey County Surveyor's Office
November 30, 2009	Tied cast iron monument. City of Saint Paul Surveyor
October 3, 2012	Found a cast iron monument within a cast iron manhole assembly and inspected local ties. Ramsey County Surveyor's Office
June 7, 2017	Found a cast iron monument within a cast iron manhole assembly and inspected local ties. Ramsey County Surveyor's Office
August 25, 2021	Found a cast iron monument within a cast iron manhole assembly and inspected local ties. Ramsey County Surveyor's Office
May 2, 2025	Found a cast iron monument within a cast iron manhole assembly and inspected local ties. Ramsey County Surveyor's Office
November 20, 2025	Found a cast iron monument within a cast iron manhole assembly and recorded new local ties. Ramsey County Surveyor's Office