

MONUMENT 44

CERTIFICATE OF LOCATION OF GOVERNMENT CORNER

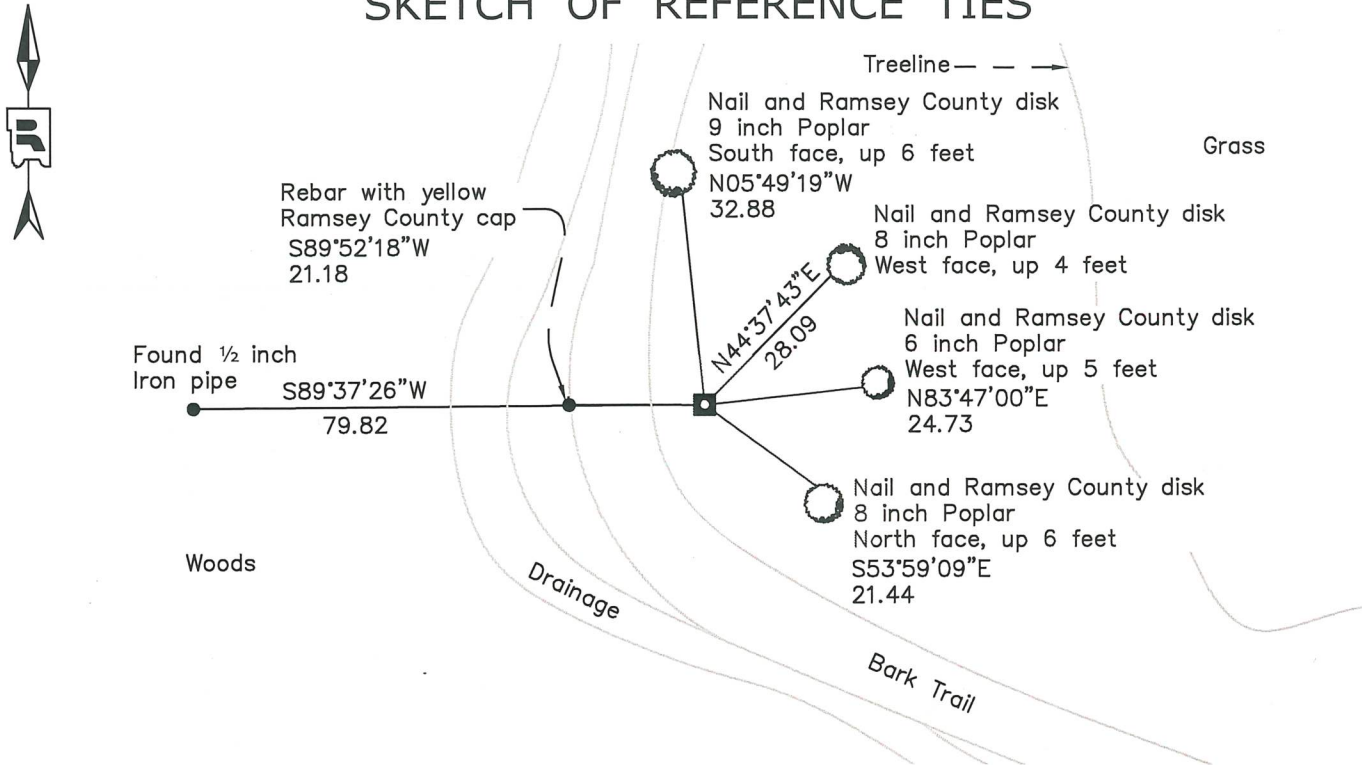
East Quarter Corner of Section 4, Township 30 North, Range 22 West, County of Ramsey, State of Minnesota.

At the corner location shown on the sketch

On October 25, 2024 found a granite monument, up 0.5 feet.

On \_\_\_\_\_ placed a \_\_\_\_\_

SKETCH OF REFERENCE TIES



Monument 44		
Ramsey County		
NAD83 (1986)	NAD83 (2011)	
Northing = 218435.88	Northing = 218436.63	All distances are shown in U.S. Survey Feet.
Easting = 587064.01	Easting = 587063.32	Bearings are for tie reference purposes only.

Statements of evidence relative to this corner are on the following page.

I hereby certify that this survey, plan, or report was prepared by me or under my direct supervision, that I am a duly Licensed Land Surveyor under the laws of the state of Minnesota, and that this certificate is correct and complete to the best of my knowledge and belief.

*Devin R. Ball* 3/3/26  
Devin R. Ball  
Deputy County Surveyor  
Minnesota License No. 56023

OFFICE OF COUNTY SURVEYOR  
County of Ramsey

I hereby certify that this document was filed in the County Surveyor's office this 11th day of March, 2026.

*Daniel D. Baar*  
Daniel D. Baar  
Ramsey County Surveyor  
Minnesota License No. 45816

# MONUMENT 44

East Quarter Corner of Section 4, Township 30 North, Range 22 West

December 3, 1847	North between Sections 3 and 4. At 40.00 chains, Set ¼ Section post. Bur Oak 16 S83E 82 Aspen 7 N20E 75 Isaac N. Higbee, Deputy Surveyor
February 11, 1902	In Establishing the ¼ Corner between Sections 3 and 4 found old stake at corner of old fence, no Government trees. Ramsey County Resurvey
December 19, 1902	Set monument. Ramsey County Resurvey
October, 1939	Checked monument. Ramsey County Engineer's Office
June 6, 1977	Found granite monument, up 6 inches, tipped west. Ramsey County Surveyor's Office
July 28, 1981	Tied granite monument, flush. Ramsey County Surveyor's Office
October 27, 1999	Granite monument, up 5 inches, set sign and post 8 inches north of monument, retied. Ramsey County Surveyor's Office
December 16, 2004	Retied granite monument. Ramsey County Surveyor's Office
September 24, 2009	Retied granite monument, up 0.5 feet. Ramsey County Surveyor's Office
May 16, 2014	Found a granite monument up 0.5 feet and inspected local ties. Ramsey County Surveyor's Office
September 14, 2020	Found a granite monument up 0.5 feet and inspected local ties. Ramsey County Surveyor's Office
October 25, 2024	Found a granite monument up 0.5 feet and recorded local ties. Ramsey County Surveyor's Office