

MONUMENT 436

CERTIFICATE OF LOCATION OF GOVERNMENT CORNER

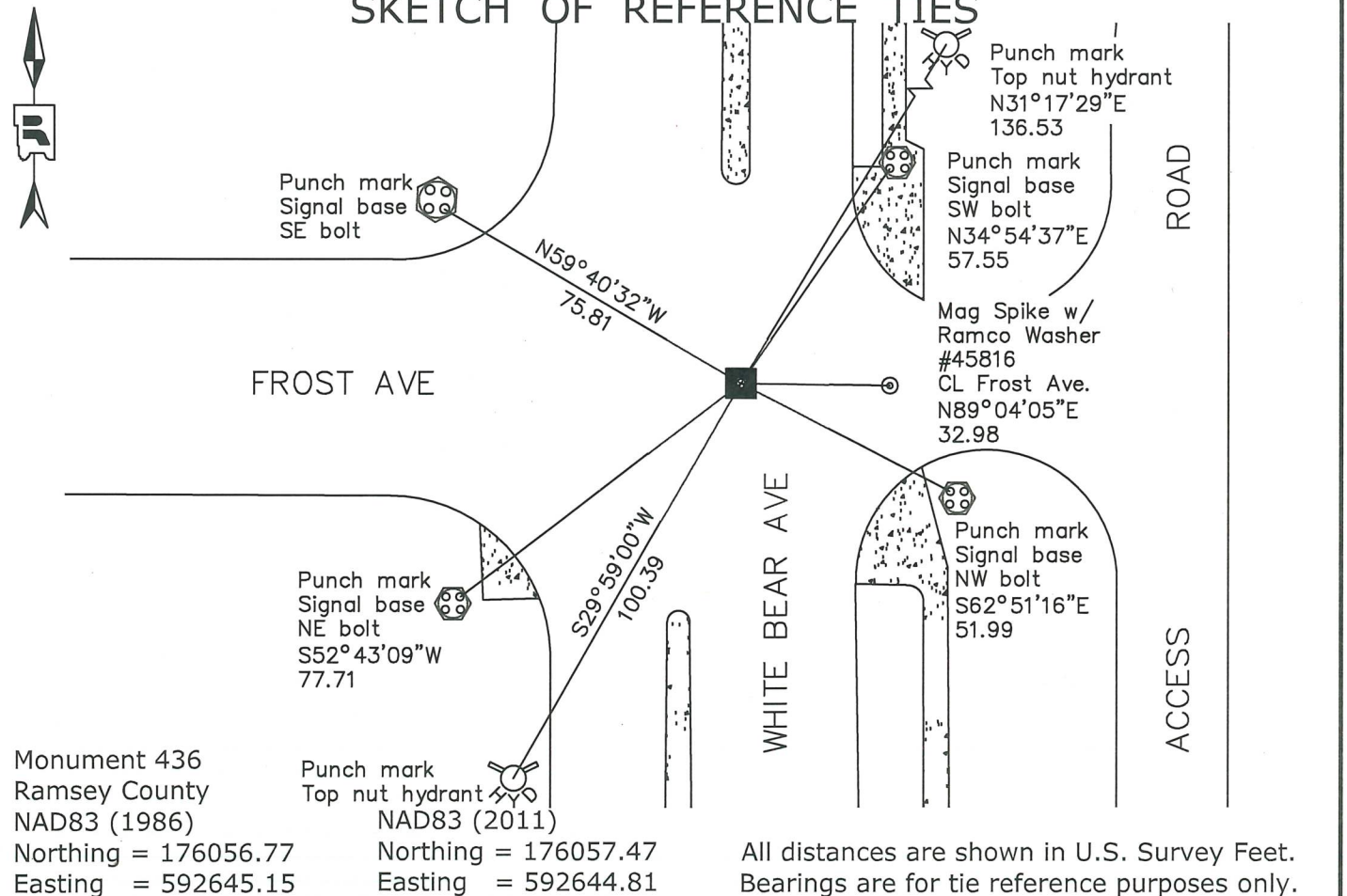
East Quarter Corner of Section 15, Township 29 North, Range 22 West, County of Ramsey, State of Minnesota.

At the corner location shown on the sketch

On November 20, 2025 found a 8"x 8" granite monument, with drill hole, within a cast iron manhole assembly.

On _____ placed a _____

SKETCH OF REFERENCE TIES



Statements of evidence relative to this corner are on the following page.

I hereby certify that this survey, plan, or report was prepared by me or under my direct supervision, that I am a duly Licensed Land Surveyor under the laws of the state of Minnesota, and that this certificate is correct and complete to the best of my knowledge and belief.

Devin R. Ball 3/3/26
 Devin R. Ball Date
 Deputy County Surveyor
 Minnesota License No. 56023

OFFICE OF COUNTY SURVEYOR
 County of Ramsey

I hereby certify that this document was filed in the County Surveyor's office this 11th day of March, 2026.

Daniel D. Baar
 Daniel D. Baar
 Ramsey County Surveyor
 Minnesota License No. 45816

MONUMENT 436

East Quarter Corner of Section 15, Township 29 North, Range 22 West

November 29, 1847	Set $\frac{1}{4}$ Section post Burr Oak 8 S30°W 16 Burr Oak 14 N49°E 56 Isaac N. Higbee, Deputy Surveyor
1895	The $\frac{1}{4}$ Corner between Sections 14 and 15, found old stake, Government witness trees gone, set monument. Ramsey County Resurvey
June 17, 1927	GARDEN ACRES plat shows a stone monument at described location. Chas Murray, Surveyor
April 29, 1953	EDGEVIEW plat shows an iron monument at described location. Milner W. Carley, LS No. 855
December 8, 1960	Tied monument. Ramsey County Engineer
1974	Found a cast iron monument, flush. Ramsey County Surveyor's Office
December 5, 1983	Monument destroyed by White Bear Avenue construction project; placed a P.K. nail. Ramsey County Surveyor's Office
August 3, 1994	Set P.K. nails and tied. Ramsey County Surveyor's Office
September 1994	Set a 20 in. cast iron monument. Ramsey County Surveyor's Office
November 6, 2002	Tied monument. Ramsey County Surveyor's Office
August 3, 2005	Cast iron monument removed for road milling project; found granite monument and placed a cast iron manhole assembly over granite monument. Ramsey County Surveyor's Office
August 27, 2007	Tied out granite monument. Ramsey County Surveyor's Office
July 25, 2012	Found a granite monument within a cast iron manhole assembly and inspected local ties. Ramsey County Surveyor's Office
June 23, 2017	Found a granite monument within a cast iron manhole assembly and inspected local ties. Ramsey County Surveyor's Office
September 24, 2021	Found a granite monument within a cast iron manhole assembly and inspected local ties. Ramsey County Surveyor's Office
May 8, 2025	Found a granite monument within a cast iron manhole assembly and inspected local ties. Ramsey County Surveyor's Office

MONUMENT 436

East Quarter Corner of Section 15, Township 29 North, Range 22 West

November 20, 2025 Found a granite monument within a cast iron manhole assembly and recorded new local ties.
Ramsey County Surveyor's Office