

MONUMENT 396

CERTIFICATE OF LOCATION OF GOVERNMENT CORNER

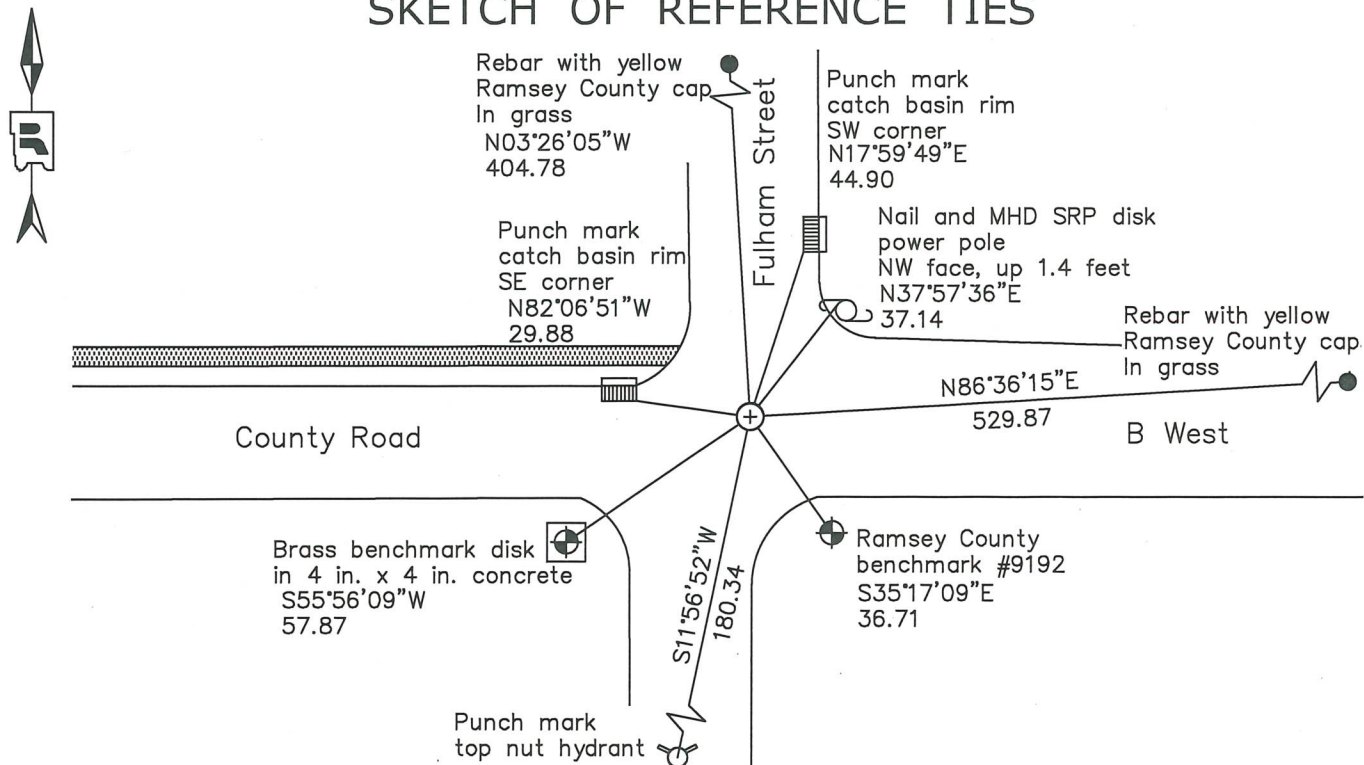
North Quarter Corner of Section 17, Township 29 North, Range 23 West, County of Ramsey, State of Minnesota.

At the corner location shown on the sketch

On April 15, 2024 found a Ramsey County cast iron monument, flush

On November 7, 2024 placed a 5/8 inch by 14 inch rebar with 3 inch aluminum cap stamped "Ramsey County Surveyor"

SKETCH OF REFERENCE TIES



Monument 396
 Ramsey County
 NAD83 (1986)
 Northing = 178454.96
 Easting = 548098.78

NAD83 (2011)
 Northing = 178455.57
 Easting = 548098.45

All distances are shown in U.S. Survey Feet.
 Bearings are for tie reference purposes only.

Statements of evidence relative to this corner are on the following page.

I hereby certify that this survey, plan, or report was prepared by me or under my direct supervision, that I am a duly Licensed Land Surveyor under the laws of the state of Minnesota, and that this certificate is correct and complete to the best of my knowledge and belief.

Devin R. Ball 3/3/26
 Devin R. Ball Date
 Deputy County Surveyor
 Minnesota License No. 56023

OFFICE OF COUNTY SURVEYOR
 County of Ramsey

I hereby certify that this document was filed in the County Surveyor's office this 11th day of March, 2026.

Daniel D. Baar
 Daniel D. Baar
 Ramsey County Surveyor
 Minnesota License No. 45816

MONUMENT 396

North Quarter Corner of Section 17, Township 29 North, Range 23 West

November 3, 1847	West corrected between Sections 8 and 17. At 40.31 chains, Set $\frac{1}{4}$ Section post W. Oak 15 S40°E 13 W. Oak 14 N9°W 37 Issac N. Higbee, Deputy Surveyor
December 9, 1898	In Establishing the $\frac{1}{4}$ Corner between Sections 8 and 17, found Government stump, fixed Corner and tied it. Ramsey County Resurvey
August, 1899	Set granite monument Ramsey County Resurvey
May 28, 1933	Reset monument. Ramsey County Engineer's Office
October 23, 1933	Monument missing replaced with 2 inch iron. Ramsey County Engineer's Office
April 25, 1945	Plat of FAIRVIEW SUBDIVISION shows an iron monument at this location. Charles Murray, LS No. 379
April, 1945	Checked monument. Ramsey County Engineer's Office
July, 1959	Checked monument. Ramsey County Engineer's Office
June 7, 1962	Set cast iron monument based on old ties and recorded new local ties. Charles O. Georgi, LS No. 3960
June 16, 1976	Found a cast iron monument down 0.2 feet. Ramsey County Surveyor's Office
July 29, 1977	Checked monument. Ramsey County Surveyor's Office
June 8, 1984	Retied monument. Ramsey County Surveyor's Office
August 13, 1990	Retied monument. Ramsey County Surveyor's Office
July 23, 2002	Retied monument. Ramsey County Surveyor's Office
September 5, 2007	Retied monument. Ramsey County Surveyor's Office
June 21, 2012	Checked condition of cast iron monument, down 0.25 feet, in bituminous road, and ties. Ramsey County Surveyor's Office

MONUMENT 396

North Quarter Corner of Section 17, Township 29 North, Range 23 West

July 12, 2017	Found a cast iron monument and inspected local ties. Ramsey County Surveyor's Office
June 6, 2021	Found a cast iron monument and inspected local ties. Ramsey County Surveyor's Office
April 15, 2024	Established offsets and checked local ties prior to removal of cast iron monument during road construction. Ramsey County Surveyor's Office
November 7, 2024	Placed a $\frac{5}{8}$ inch by 14 inch rebar with 3 inch aluminum cap stamped "Ramsey County Surveyor" in bituminous road following road construction using offsets. Recorded local ties. Ramsey County Surveyor's Office