

CERTIFICATE OF LOCATION OF GOVERNMENT CORNER

City ID: 0255

Old Index #: 1287

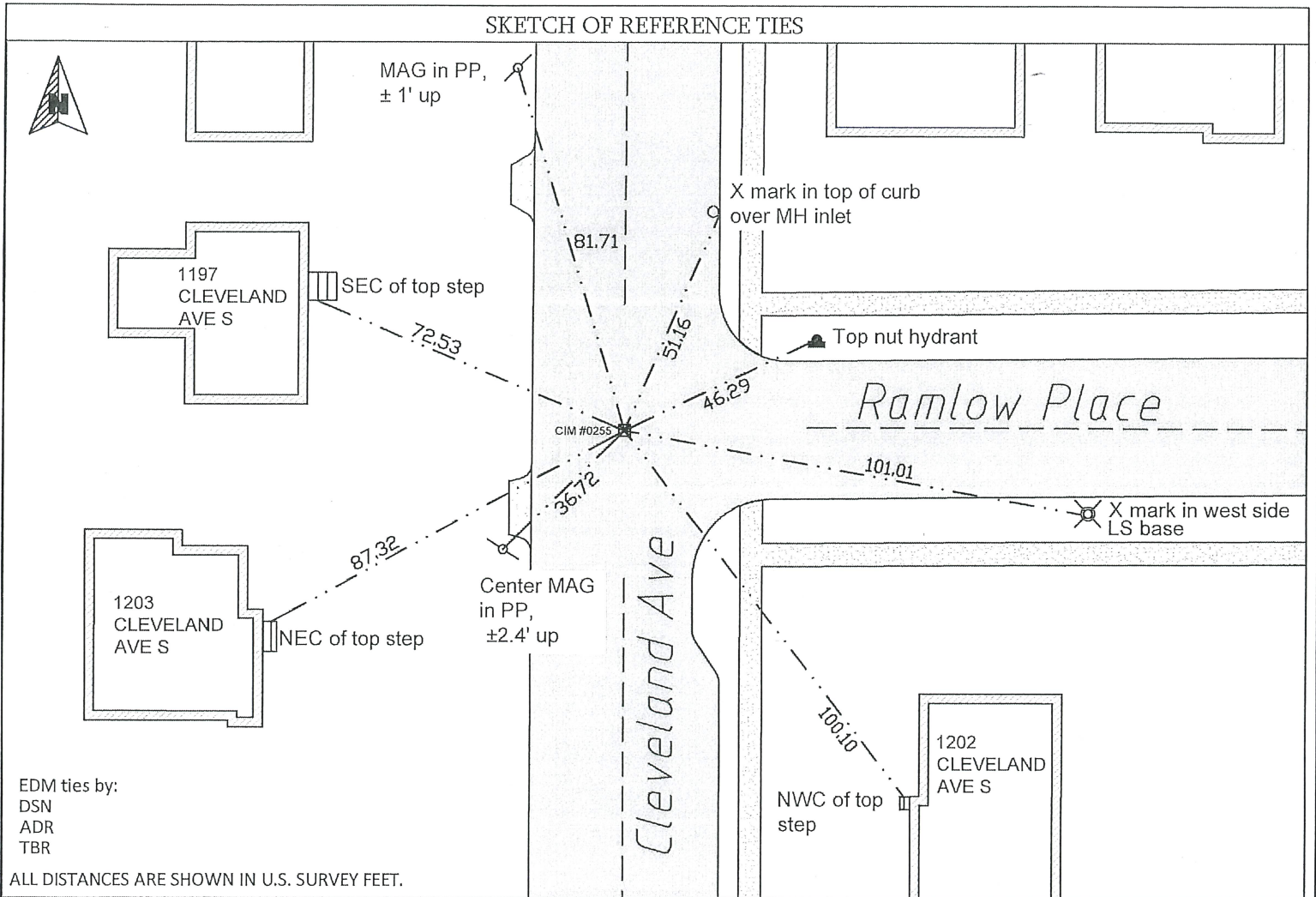
County ID #: 0719

Southwest Corner of Section 16, Township 28 North,
Range 23 West, Fourth Principal Meridian, County of Ramsey, State of Minnesota,
At the corner location shown on the sketch:

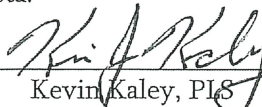
On June 25, 2024 found CIM 1.2' below grade of roadway

left monument as found lowered monument removed monument (explain)

On June 25, 2024 placed new ties using Trimble S6 Total Station.



I hereby certify that this survey, plan, or report was prepared by me, or under my direct supervision, and that I am a duly Licensed Land Surveyor under the laws of the State of Minnesota.

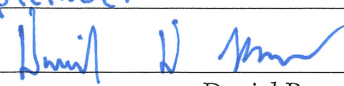

 Kevin Kaley, PLS
 Chief Surveyor, City of Saint Paul, Minnesota

9/10/2024
 Date

Registration No. #53546

Office of the County Surveyor, Ramsey County, Minnesota

I hereby certify that this document was filed with the County Surveyor's Office at 12:00 P.M. on the 18th day of September, 2024.


 Daniel Baar, LS
 County Surveyor, Ramsey County, Minnesota

MONUMENT 0255

Southwest Corner of Section 16, Township 28N Range 23W

June 25, 2024

CIM found 1.2 ft below surface grade. New ties established using Trimble S6 Total Station.

December 23, 2012

CIM found by MnDOT. Coordinate established using static GPS (1996 adj). City Elev = 123.54 ft

March 4, 2002

Elev 123.39 ft on CIM 0.76 ft below concrete surface. See FB 1736 p.32

September 24, 1995

Fd CIM in metal cylinder, placed ties, left CIM as found. See CofL 0255-1287-A

January 20, 1994

Used CIM for traverse control. See FB 1726 p.69

March 31, 1991

(Unknown date Apr __, 1991) Fd CIM cylinder with "M" printed on top; monument approx. 1" in bottom of cyl.

July 31, 1985

(Unknown date Aug __, 1985) Elev 124.23 ft on ?. See FB 1421A p.74

December 31, 1984

(Unknown date __ __, 1985) Historic, one time only GPS survey = S071

May 31, 1948

(Unknown date Jun __, 1948) Placed ties. See FB 1384 p.4

March 31, 1943

(Unknown date Apr __, 1943) Placed ties. See FB 1059 p.4

May 20, 1901

Monument lowered 14" See Old Index Book, Entry 1287

February 29, 1888

(Unknown date Mar __, 1888) Monument set by R J Johnson in place of iron found at corner. See FB 249 p.9

September 30, 1847

(Unknown date Oct __, 1847) Isaac N Higbee deputy surveyor set post. Tied to 1 BT. See IH p.018-019 2823