

# MONUMENT 700

## CERTIFICATE OF LOCATION OF GOVERNMENT CORNER

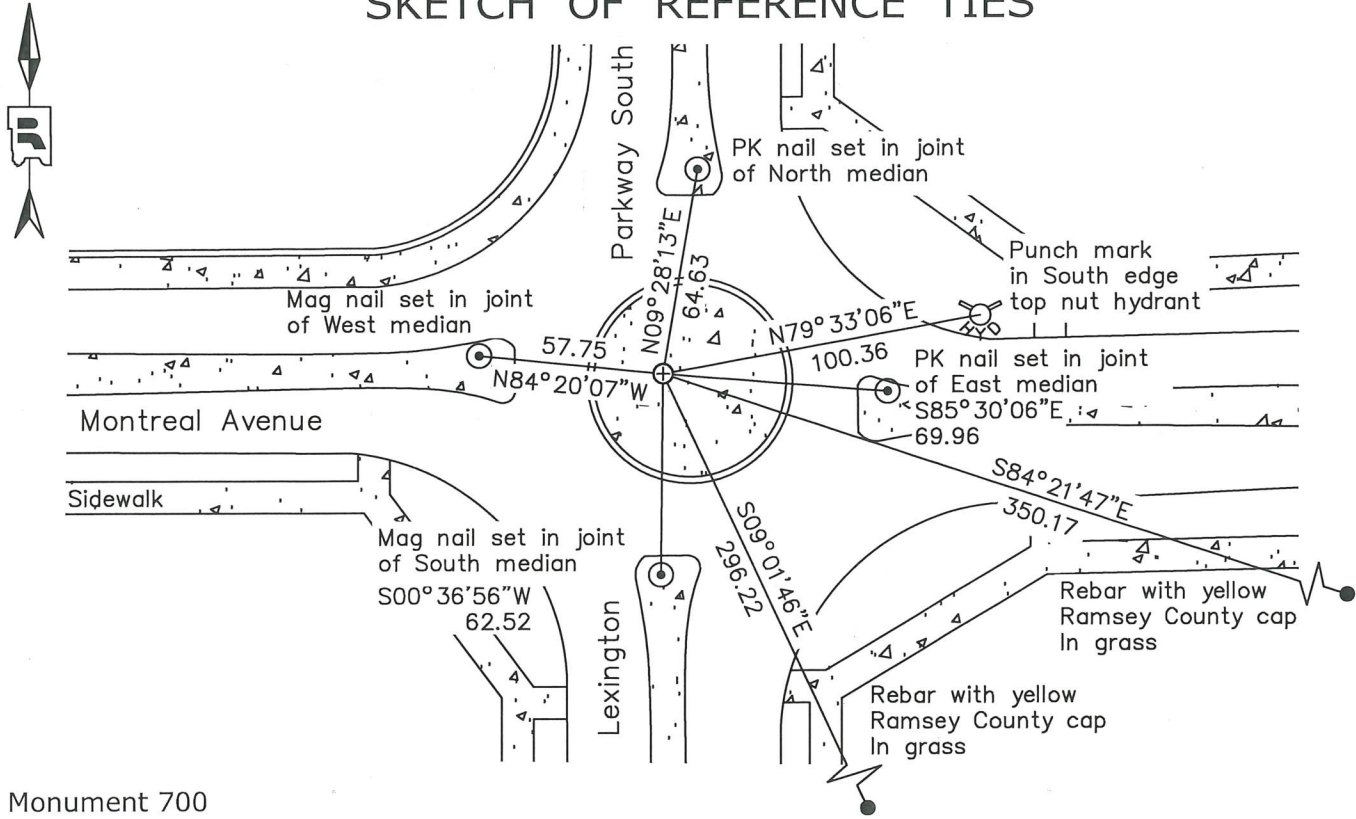
East Quarter Corner of Section 15, Township 28 North, Range 23 West, County of Ramsey, State of Minnesota.

At the corner location shown on the sketch

On May 1, 2023 found a broken cast iron monument, down 0.8 feet

On December 6, 2023 placed a 1 inch copper marker stamped "Ramsey County" in concrete roundabout

### SKETCH OF REFERENCE TIES



Monument 700		
Ramsey County		
NAD83 (1986)	NAD83 (2011)	
Northing = 144318.77	Northing = 144319.41	All distances are shown in U.S. Survey Feet. Bearings are for tie reference purposes only.
Easting = 561314.04	Easting = 561313.79	

Statements of evidence relative to this corner are on the following page.

I hereby certify that this survey, plan, or report was prepared by me or under my direct supervision, that I am a duly Licensed Land Surveyor under the laws of the state of Minnesota, and that this certificate is correct and complete to the best of my knowledge and belief.

Devin R. Ball 5/31/24  
 Devin R. Ball Date  
 Deputy County Surveyor  
 Minnesota License No. 56023

OFFICE OF COUNTY SURVEYOR  
 County of Ramsey

I hereby certify that this document was filed in the County Surveyor's office this 4<sup>th</sup> day of June, 2024.

Daniel D. Baar  
 Daniel D. Baar  
 Ramsey County Surveyor  
 Minnesota License No. 45816

# MONUMENT 700

East Quarter Corner of Section 15, Township 28 North, Range 23 West

October 28, 1847	At 40.00 chains set 1/4 Section post. Bur Oak 14 S30°W 2.48 Bur Oak 12 N72°W 1.33 Issac N. Higbee, Deputy Surveyor
1885	Monument set by Gates A. Johnson. St. Paul Surveyor's Office
February, 1888	Section break down by R J Johnson. St. Paul Surveyor's Office
February, 1888	Fd hub, underneath of which found old oak stake, 2 ft under surface. St. Paul Surveyor's Office
February, 1888	Survey of Section 14-28-23. St. Paul Surveyor's Office
April, 1888	Section break down by R J Johnson. St. Paul Surveyor's Office
March, 1963	Placed ties. St. Paul Surveyor's Office
April 1, 1991	GM set to grade. St. Paul Surveyor's Office
April 23, 1991	Placed 4 ties on GM. St. Paul Surveyor's Office
September 26, 1995	Found CIM set to grade, placed ties, left CIM as found. St. Paul Surveyor's Office
November 2, 2012	Found CIM at street grade. Photos taken and ties placed using steel tape. St. Paul Surveyor's Office
May 1, 2023	Found broken cast iron monument, down 0.8 feet. Established offsets and checked local ties prior to removal during road construction. Ramsey County Surveyor's Office
December 6, 2023	Set 1 inch copper marker stamped "Ramsey County" in concrete roundabout following road construction using offsets. Recorded local ties. Ramsey County Surveyor's Office