

CERTIFICATE OF LOCATION OF GOVERNMENT CORNER

City ID: 0235

Old Index #: 1292

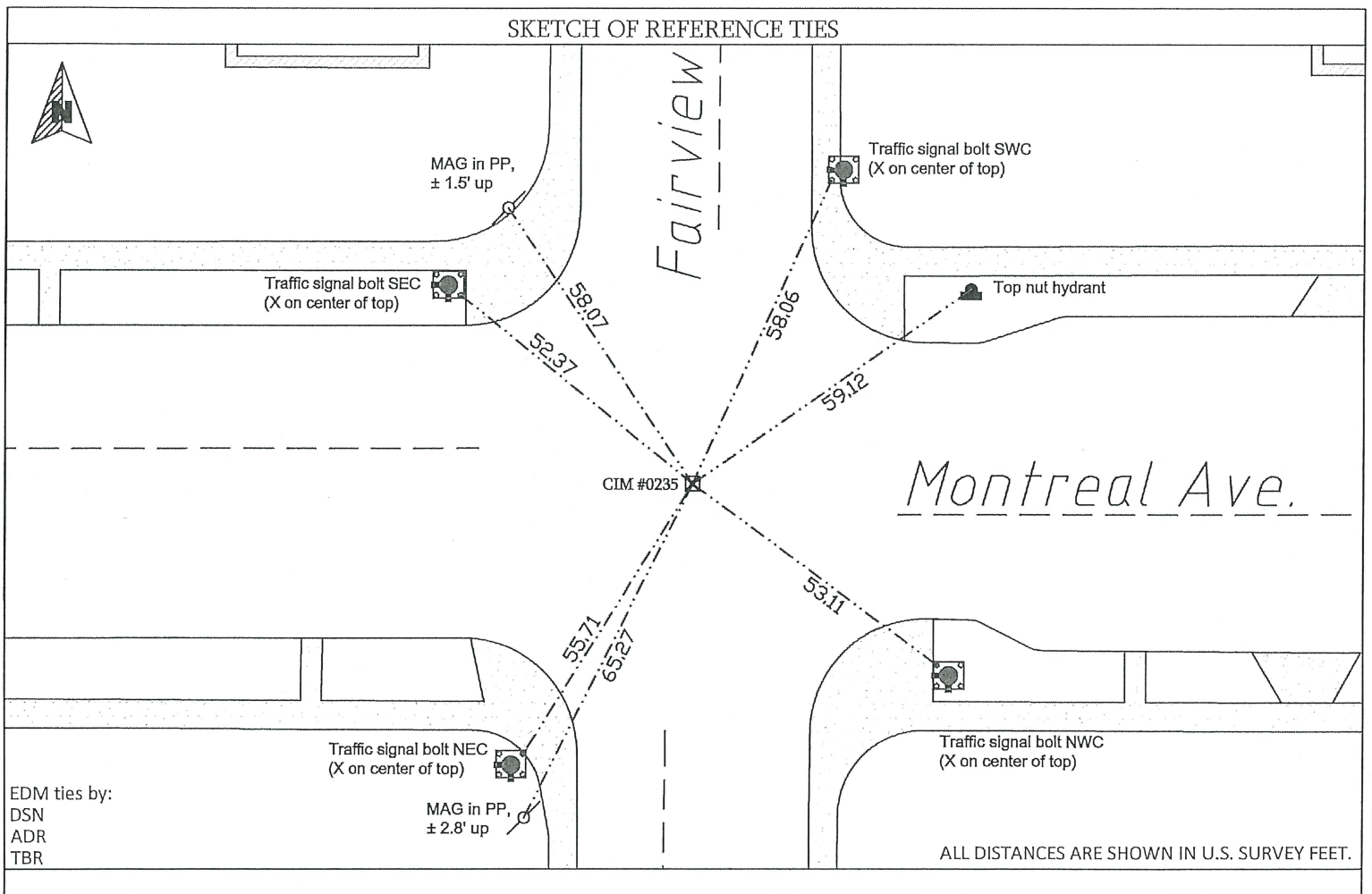
County ID #: 0697

Northeast Corner of Section 16, Township 28 North,
Range 23 West, Fourth Principal Meridian, County of Ramsey, State of Minnesota,
At the corner location shown on the sketch:

On June 13, 2024 found partially destroyed CIM with center intact 0.5' below
grade of roadway.

left monument as found lowered monument removed monument (explain)

On June 13, 2024 placed new ties using Trimble S6 Total Station.



I hereby certify that this survey, plan, or report was prepared by me, or under my direct supervision, and that I am a duly Licensed Land Surveyor under the laws of the State of Minnesota.

Kevin Kaley 9/10/2024
Kevin Kaley, PLS Date
Chief Surveyor, City of Saint Paul, Minnesota

Registration No. #53546

Office of the County Surveyor, Ramsey County, Minnesota

I hereby certify that this document was filed with the County Surveyor's Office at 12:00 P.M. on the 19th day of

September, 2024
Daniel D. Baar

Daniel Baar, LS
County Surveyor, Ramsey County, Minnesota

Scanned on: ___/___/___ by _____

MONUMENT 0235

Northeast Corner of Section 16, Township 28N Range 23W

June 13, 2024

CIM found 0.5 ft below street grade, damaged but center is intact. New ties established using Trimble S6 Total Station.

April 24, 2012

Found CIM at street grade. Photos taken.

March 4, 2002

Elev 222.62 ft on CIM 0.03 ft below asphalt surface. See FB 1736 p.32

February 29, 2000

(Unknown date Mar __, 2000) Fd CIM at grade (marked for painting target for 2000 aerial)

September 29, 1994

Fd CIM at grade, placed ties, left CIM as found. See CofL 0235-1292-A

January 30, 1994

Traversed through CIM. See FB 1726 p.79

March 31, 1991

(Unknown date Apr __, 1991) CIM set 0.1 ft below grade.

January 31, 1985

(Unknown date Feb __, 1985) Elev 222.97 ft on ?. See FB 892F p.11

August 31, 1889

(Unknown date Sep __, 1889) Survey of Magoffins Midway Addition by R J Johnson. See JBI 01 p.45-46

August 31, 1889

(Unknown date Sep __, 1889) Monument tied in by R J Johnson. See Old Index Book, Entry 1708

February 29, 1888

(Unknown date Mar __, 1888) Monument set by McCarron from survey. See FB 250 p.2,3