

MONUMENT 651

CERTIFICATE OF LOCATION OF GOVERNMENT CORNER

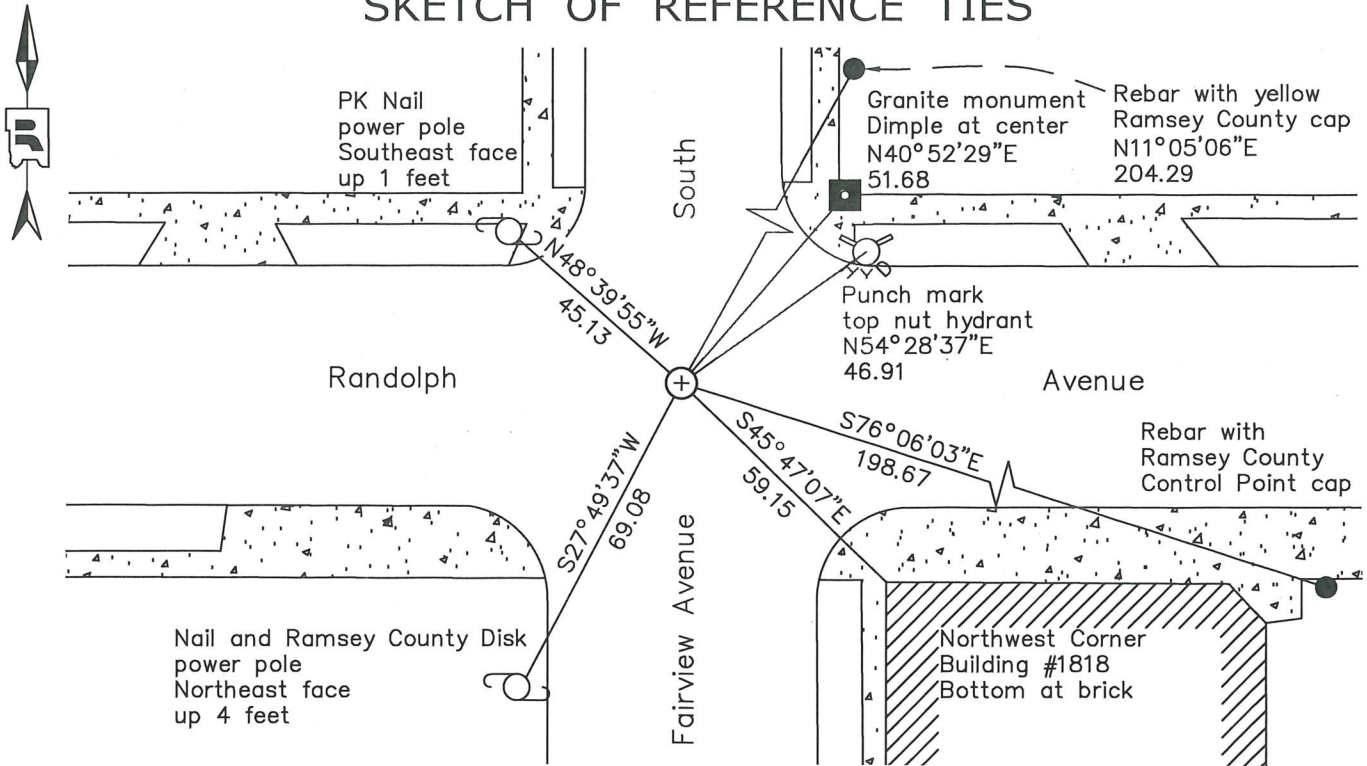
Center of Section 9, Township 28 North, Range 23 West, County of Ramsey, State of Minnesota.

At the corner location shown on the sketch

On September 29, 2023 found a cast iron monument, down 0.12 feet.

On October 9, 2023 placed a 5/8 inch by 7 inch rebar with 3 inch aluminum cap stamped "Ramsey County Surveyor".

SKETCH OF REFERENCE TIES



Monument 651	
Ramsey County	
NAD83 (1986)	NAD83 (2011)
Northing = 149624.93	Northing = 149625.59
Easting = 553392.50	Easting = 553391.99

All distances are shown in U.S. Survey Feet.
Bearings are for tie reference purposes only.

Statements of evidence relative to this corner are on the following page.

I hereby certify that this survey, plan, or report was prepared by me or under my direct supervision, that I am a duly Licensed Land Surveyor under the laws of the state of Minnesota, and that this certificate is correct and complete to the best of my knowledge and belief.

Devin R. Ball 5/31/24
 Devin R. Ball Date
 Deputy County Surveyor
 Minnesota License No. 56023

OFFICE OF COUNTY SURVEYOR
 County of Ramsey

I hereby certify that this document was filed in the County Surveyor's office this 4th day of June, 2024.

Daniel D. Baar
 Daniel D. Baar
 Ramsey County Surveyor
 Minnesota License No. 45816

MONUMENT 651

Center Corner of Section 9, Township 28 North, Range 23 West

April, 1888	Monument set by McCarron from survey of 1/4 lines across Section. St. Paul Surveyor's Office
December 19, 1891	Monument lowered by J B Irvine. St. Paul Surveyor's Office
November, 1972	P.K. Nail Temporary. St. Paul Surveyor's Office
August, 1973	Cast iron monument set to grade. St. Paul Surveyor's Office
January 21, 1985	Found PK. St. Paul Surveyor's Office
April, 1991	Found pk nail. St. Paul Surveyor's Office
October 22, 1992	Set CIM in concrete to grade. St. Paul Surveyor's Office
March, 2000	Fd CIM 0.05 feet below grade. St. Paul Surveyor's Office
March 11, 2008	Fd CIM. St. Paul Surveyor's Office
October 9, 2010	Found a CIM 0.12 below asphalt grade and placed ties. St. Paul Surveyor's Office
September 29, 2023	Found a cast iron monument down 0.12 feet. Established offsets and checked local ties prior to removal during road construction. Ramsey County Surveyor's Office
October 9, 2023	Placed a 5/8 inch by 7 inch rebar with 3 inch aluminum cap stamped "Ramsey County Surveyor" following road construction using offsets. Recorded local ties. Ramsey County Surveyor's Office