

MONUMENT 599

CERTIFICATE OF LOCATION OF GOVERNMENT CORNER

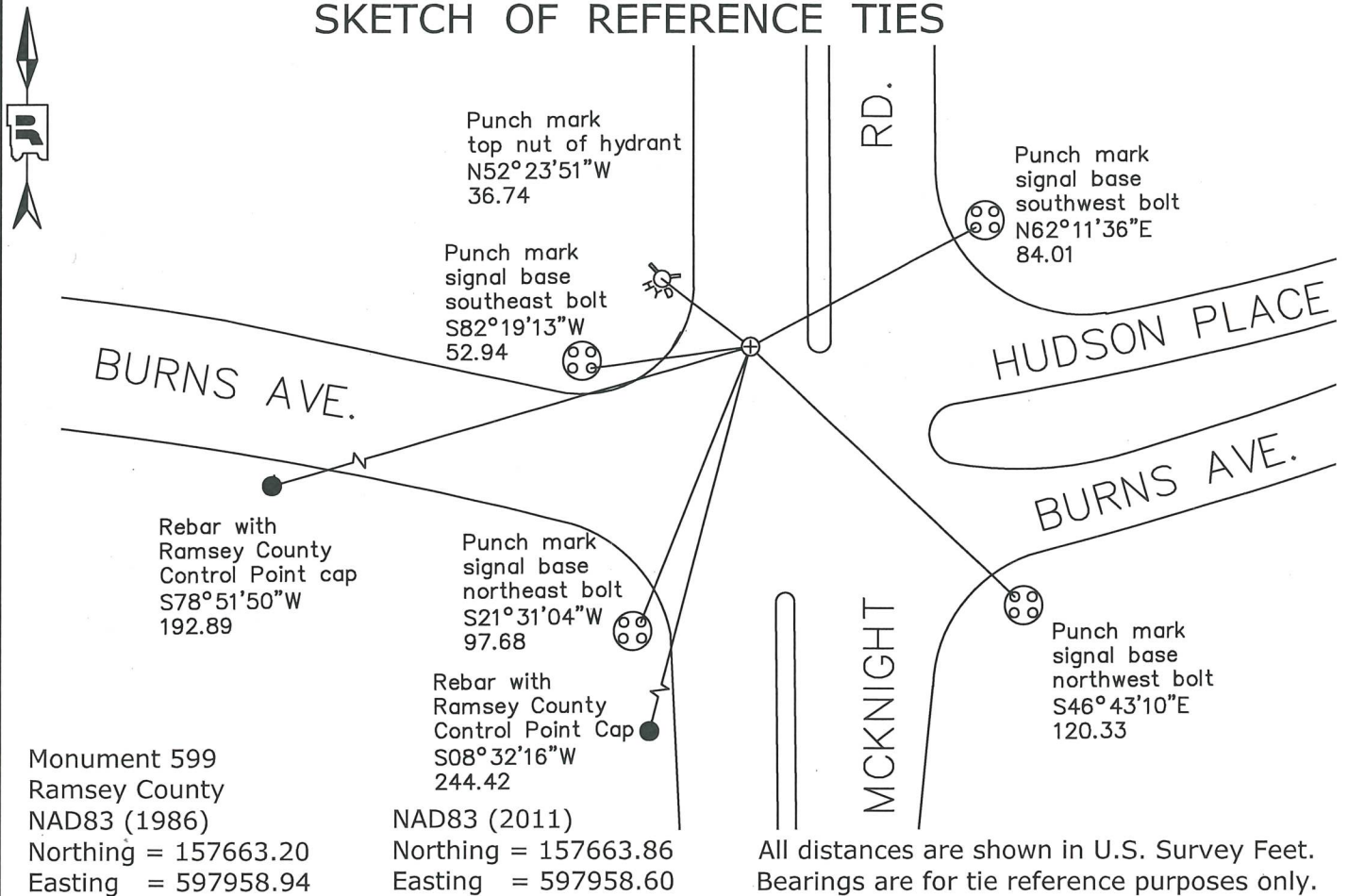
Northeast Corner of Section 2, Township 28 North, Range 22 West, County of Ramsey,
State of Minnesota.

At the corner location shown on the sketch

On October 11, 2021 found a cast iron monument in bituminous road.

On November 2, 2021 placed a 5/8 inch by 14 inch rebar with 3 inch aluminum cap
stamped " Ramsey County Surveyor".

SKETCH OF REFERENCE TIES



Statements of evidence relative to this corner are on the following page.

I hereby certify that this survey, plan, or report was prepared by me or under my direct supervision, that I am a duly Licensed Land Surveyor under the laws of the state of Minnesota, and that this certificate is correct and complete to the best of my knowledge and belief.

Devin R. Ball 3/8/24

Devin R. Ball Date
Deputy County Surveyor
Minnesota License No. 56023

OFFICE OF COUNTY SURVEYOR
County of Ramsey

I hereby certify that this document was filed in the County Surveyor's office this 12th day of March, 20 24.

Daniel D. Baar

Daniel D. Baar
Ramsey County Surveyor
Minnesota License No. 45816

MONUMENT 599

Northeast Corner of Section 2, Township 28, Range 22 West

October 6, 1847	At 80.0 chains set post at corner to Section 1,2,35 and 36. Tied to two bearing trees. Bur Oak 11 N39E 142 Bur Oak 8 N10W James M. Marsh, Deputy Surveyor
January 14, 1891	Monument was set by J.H. Armstrong. City of Saint Paul Surveyor's Office
April 1933	Reset monument. City of Saint Paul Surveyor's Office
February 7, 1934	Set ties on granite monument, 1 inch above grade. City of Saint Paul Surveyor's Office
Unknown	Cast iron monument set to grade. No date given. City of Saint Paul Surveyor's Office
July 8, 1975	Found a cast iron monument flush. Previously set by City of St. Paul. Ramsey County Surveyor's Office
May 15, 1998	Tied monument for maintenance road milling. Ramsey County Surveyor's Office
March 13, 2001	Found cast iron monument at grade, placed ties and left monument as found. City of Saint Paul Surveyor's Office
July 21, 2006	Retied monument. Ramsey County Surveyor's Office
September 24, 2009	Found broken cast iron monument over iron pin. Set new cast iron monument over pin and placed ties. Ramsey County Surveyor's Office
June 7, 2011	Found cast iron monument, flush. Retied monument. Ramsey County Surveyor's Office
August 1, 2016	Found a cast iron monument, flush. Inspected local ties. Ramsey County Surveyor's Office
July 12, 2017	Found a cast iron monument, flush. Retied monument. Ramsey County Surveyor's Office
October 11, 2021	Found a cast iron monument, flush. Established offsets and inspected local ties prior to removal during road construction. Ramsey County Surveyor's Office
November 2, 2021	Placed a 5/8 inch by 14 inch rebar with 3 inch aluminum cap stamped "Ramsey County Surveyor" following road construction using offsets. Recorded local ties. Ramsey County Surveyor's Office