

# CERTIFICATE OF LOCATION OF GOVERNMENT CORNER

City ID: 0046

Old Index #: 1787A

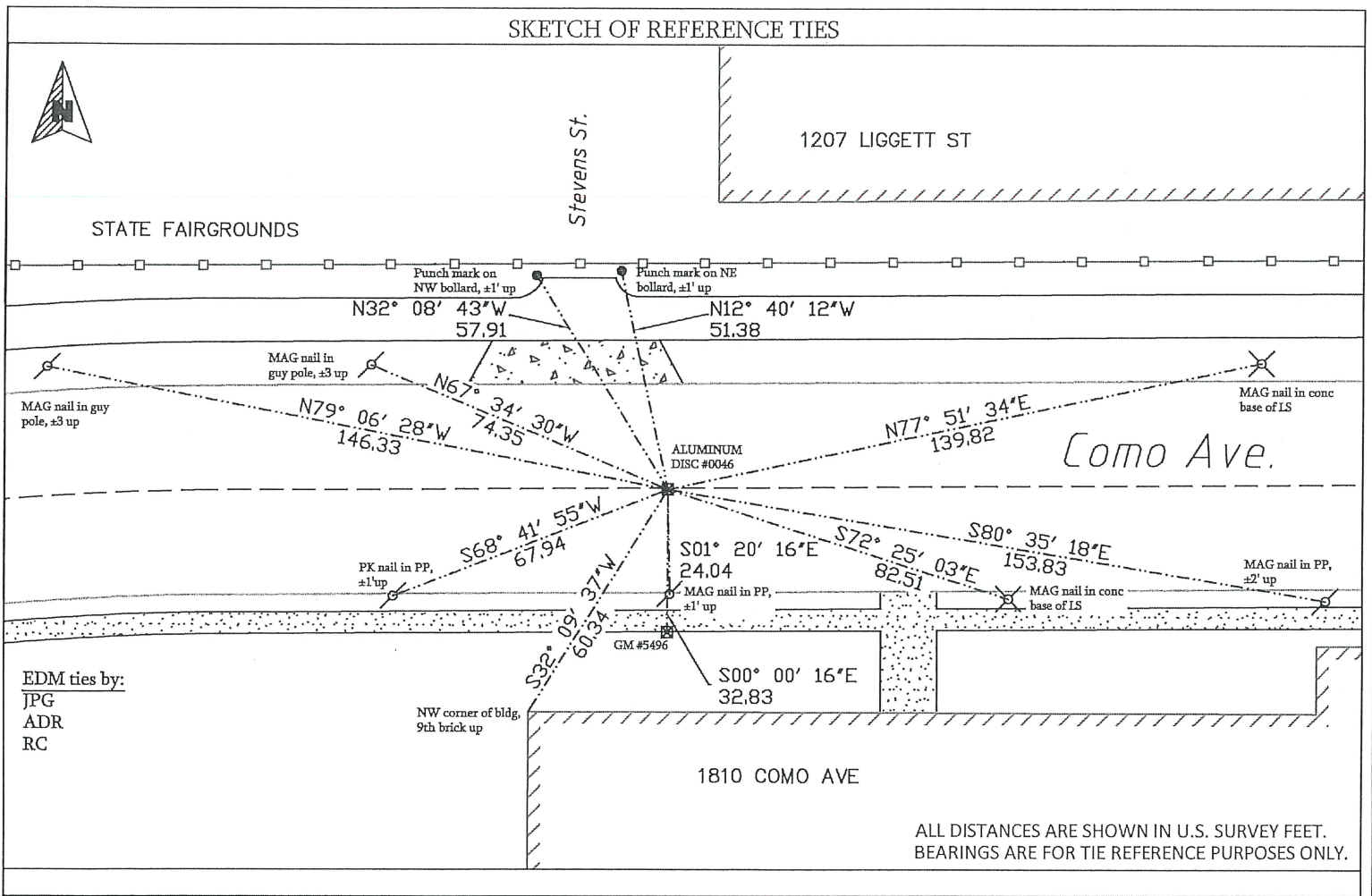
County ID #: 0490

North Quarter Corner of Section 28, Township 29 North,  
Range 23 West, Fourth Principal Meridian, County of Ramsey, State of Minnesota,  
At the corner location shown on the sketch:

On November 15, 2023 found CIM missing/obliterated due to road reconstruction project.

- left monument as found       lowered monument       removed monument (explain)

On November 20, 2023 placed a aluminum disk using existing ties and set new ties with Trimble S6 Total Station.



I hereby certify that this survey, plan, or report was prepared by me, or under my direct supervision, and that I am a duly Licensed Land Surveyor under the laws of the State of Minnesota.

*Kevin Kaley*  
Kevin Kaley, PLS

9/10/2024  
Date

Chief Surveyor, City of Saint Paul, Minnesota

Registration No. #53546

Office of the County Surveyor, Ramsey County, Minnesota

I hereby certify that this document was filed with the County Surveyor's Office at 12:00 P. M. on the 18th day of

September, 2024  
*Daniel Baar*

Daniel Baar, LS  
County Surveyor, Ramsey County, Minnesota

# MONUMENT 0046

North Corner of Section 28, Township 29N, Range 23W

NOVEMBER 20, 2023

PLACED ALUMINUM DISK USING EXISTING TIES AND SET NEW TIES WITH TRIMBLE S6 TOTAL STATION.

NOVEMBER 15, 2023

FOUND CIM MISSING/OBLITERATED DUE TO ROAD RECONSTRUCTION PROJECT.

JULY, 2020

FOUND CIM APPROX. 5' SOUTH OF CENTERLINE OF COMO AVE BEFORE THE ROAD WAS CONSTRUCTED.

JANUARY 3, 2002

ELEV 206.65 FT ON CIM AT ASPHALT SURFACE. SEE FB 1736 P.9

MARCH 16, 2000

FD CIM AT GRADE (MARKED FOR PAINTING TARGET FOR 2000 AERIAL)

OCTOBER 9, 1996

SET CIM TO GRADE. SEE COFL 0046-1787A-A

MARCH 21, 1996

FD & PAINTED PK NAIL FOR AERIAL. SEE YELLOW TIE BOOK.

DECEMBER 31, 1994

(UNKNOWN DATE \_\_ \_\_, 1995 ) CIM & GM TAKEN OUT DURING 1995 SEWER CONSTRUCTION.

OCTOBER 24, 1990

ASPHALT OVER LAY. SEE YELLOW TIE BOOK.

SEPTEMBER 30, 1990

(UNKNOWN DATE OCT \_\_, 1990 ) CIM OVER GM.

JANUARY 31, 1990

(UNKNOWN DATE FEB \_\_, 1990 ) TIES CHECKED. SEE YELLOW TIE BOOK.

FEBRUARY 25, 1985

MONUMENT CHECKED. SEE YELLOW TIE BOOK.

DECEMBER 31, 1984

(UNKNOWN DATE \_\_ \_\_, 1985 ) HISTORIC, ONE TIME ONLY GPS SURVEY = S079

APRIL 30, 1972

(UNKNOWN DATE MAY \_\_, 1972 ) SET CIM 0.6 FT OF CONCRETE OVER GM. SEE YELLOW TIE BOOK.

FEBRUARY 15, 1972

FD GM 6" BELOW GRADE. SEE FB 1689A P.8

SEPTEMBER 1, 1889

MONUMENT SET BY G SAULEZ AFTER GRADING.

OCTOBER 31, 1847

(UNKNOWN DATE NOV \_\_, 1847 ) ISAAC N HIGBEE DEPUTY SURVEYOR SET POST. TIED TO 2 BTS. SEE IH P.104-105 2923