

MONUMENT 430

CERTIFICATE OF LOCATION OF GOVERNMENT CORNER

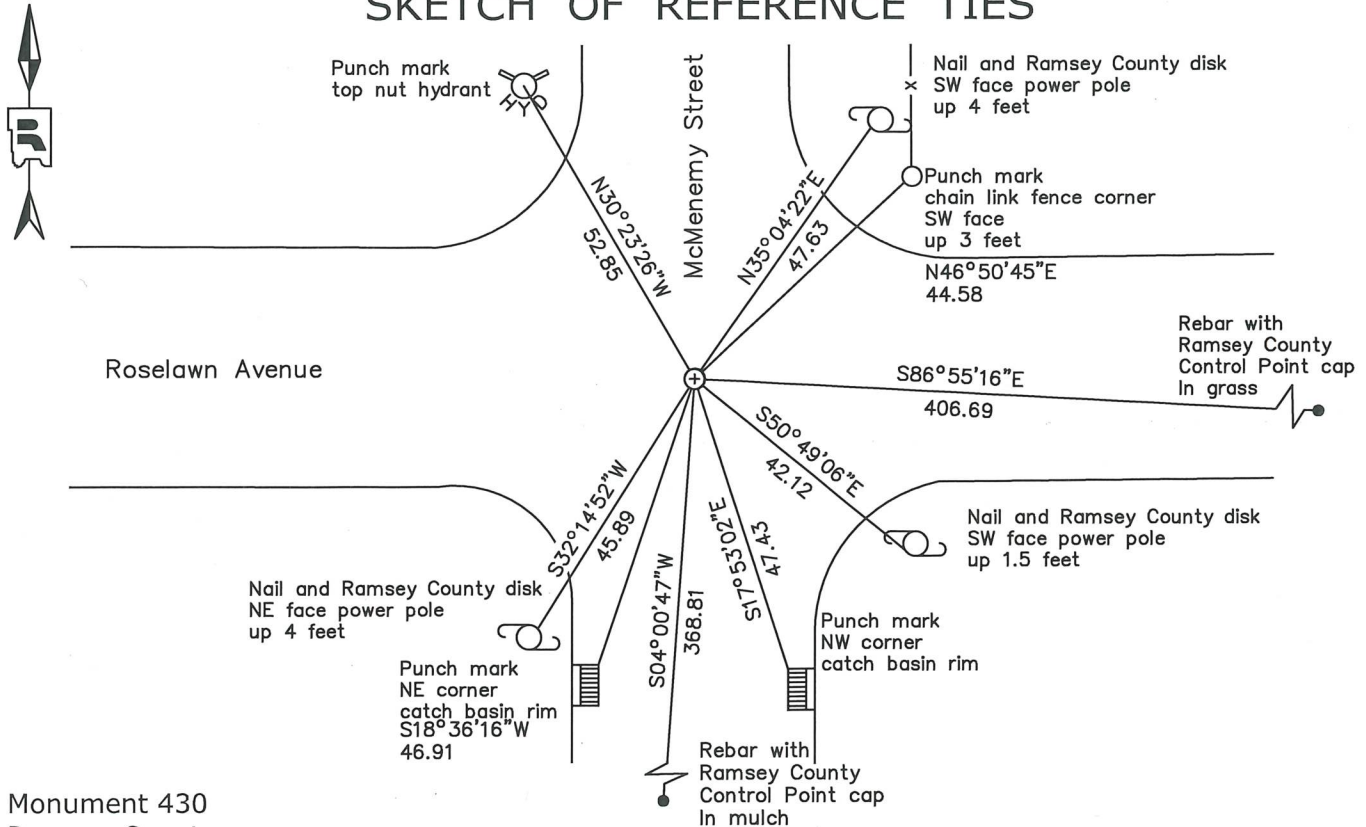
East Quarter Corner of Section 18, Township 29 North, Range 22 West, County of Ramsey, State of Minnesota.

At the corner location shown on the sketch

On May 10, 2022 found a cast iron monument in a manhole assembly.

On June 29, 2023 placed a 5/8 inch x 14 inch rebar with 3 inch aluminum cap stamped "Ramsey County Surveyor".

SKETCH OF REFERENCE TIES



Monument 430
Ramsey County

NAD83 (1986)
Northing = 175954.50
Easting = 576818.13

NAD83 (2011)
Northing = 175955.12
Easting = 576817.73

All distances are shown in U.S. Survey Feet.
Bearings are for tie reference purposes only.

Statements of evidence relative to this corner are on the following page.

I hereby certify that this survey, plan, or report was prepared by me or under my direct supervision, that I am a duly Licensed Land Surveyor under the laws of the state of Minnesota, and that this certificate is correct and complete to the best of my knowledge and belief.

Devin R. Ball 3/8/24

Devin R. Ball Date
Deputy County Surveyor
Minnesota License No. 56023

OFFICE OF COUNTY SURVEYOR
County of Ramsey

I hereby certify that this document was filed in the County Surveyor's office this 12th day of March, 20 24.

Daniel D. Baar

Daniel D. Baar
Ramsey County Surveyor
Minnesota License No. 45816

MONUMENT 430

East Quarter Corner of Section 18, Township 29 North, Range 22 West

November 29, 1847	North between Sections 17 & 18. At 40.00 chains, Set 1/4 Section post. W. Oak 18 N60°W 160 "Do" 14 S81 ½°E 181 Isaac N. Higbee, Deputy Surveyor
December 12, 1898	In establishing the 1/4 Corner between Sections 17 and 18, fixed from some old notes, found stake; Government witness trees gone. Ramsey County Resurvey
November, 1899	Set monument. Ramsey County Resurvey
May, 1939	Raised monument. Ramsey County Engineer's Office
August, 1944	Checked monument. Ramsey County Engineer's Office
October 17, 1962	Set a cast iron monument and recorded local ties. Warren I. Forsberg, LS. No. 4840
September 18, 1974	Found a cast iron monument flush and tied. Ramsey County Surveyor's Office
June 15, 1990	Removed cast iron monument. Ramsey County Surveyor's Office
October 26, 1990	Placed a 20 in. cast iron monument. Ramsey County Surveyor's Office
April, 1992	Removed cast iron monument for road maintenance. Ramsey County Surveyor's Office
October 13, 1992	Set a 20 in. cast iron monument. Ramsey County Surveyor's Office
July 8, 2002	Tied monument. Ramsey County Surveyor's Office
August 9, 2007	Retied monument. Ramsey County Surveyor's Office
August 22, 2012	Tied monument for removal during road reconstruction. Ramsey County Surveyor's Office
September 6, 2012	Removed "Ramsey County" 20 in. cast iron monument and found a 5/8 in. solid rod, down 26 in. below finished grade. Rod matched North and South position, and was 0.04 ft. East of position. Reset existing cast iron monument, down +/-4 in. at previous position. Left 5/8 in. rod in place. Placed a cast iron manhole assembly over cast iron monument; tied. Ramsey County Surveyor's Office

MONUMENT 430

East Quarter Corner of Section 18, Township 29 North, Range 22 West

June 14, 2017	Found R.C. CIM within cast iron MH assembly and inspected local ties. Ramsey County Surveyor's Office
June 10, 2021	Found a cast iron monument within a manhole assembly and inspected local ties. Ramsey County Surveyor's Office
May 10, 2022	Found a cast iron monument within a manhole assembly. Established offsets and checked local ties prior to removal during road construction. Ramsey County Surveyor's Office
June 29, 2023	Placed a 5/8 inch by 14 inch rebar with 3 inch aluminum cap stamped "Ramsey County Surveyor" following road construction using offsets. Recorded local ties. Ramsey County Surveyor's Office