

MONUMENT 404

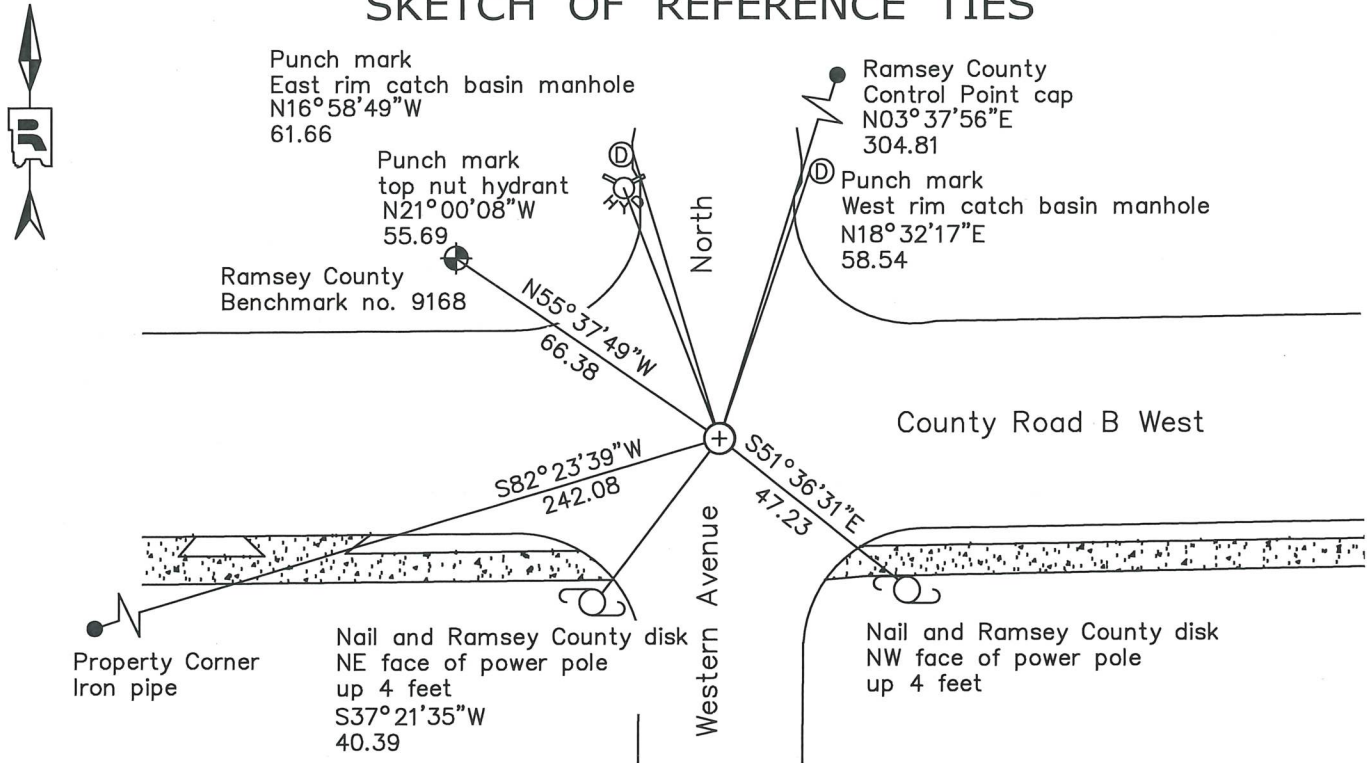
CERTIFICATE OF LOCATION OF GOVERNMENT CORNER

North Quarter Corner of Section 13, Township 29 North, Range 23 West, County of Ramsey, State of Minnesota.

At the corner location shown on the sketch

- On June 1, 2021 found a "Ramsey County" cast iron monument, flush in bituminous road.
- On June 28, 2023 placed a 5/8 inch by 7 inch rebar with 3 inch aluminum cap stamped "Ramsey County Surveyor" over a broken cast iron monument, down 10 inches.

SKETCH OF REFERENCE TIES



Monument 404		
Ramsey County		
NAD83 (1986)	NAD83 (2011)	
Northing = 178533.63	Northing = 178534.23	All distances are shown in U.S. Survey Feet. Bearings are for tie reference purposes only.
Easting = 569132.47	Easting = 569132.00	

Statements of evidence relative to this corner are on the following page.

I hereby certify that this survey, plan, or report was prepared by me or under my direct supervision, that I am a duly Licensed Land Surveyor under the laws of the state of Minnesota, and that this certificate is correct and complete to the best of my knowledge and belief.

Devin R. Ball 3/8/24

Devin R. Ball Date
Deputy County Surveyor
Minnesota License No. 56023

OFFICE OF COUNTY SURVEYOR
County of Ramsey

I hereby certify that this document was filed in the County Surveyor's office this 12th day of March, 2024.

Daniel D. Baar

Daniel D. Baar
Ramsey County Surveyor
Minnesota License No. 45816

MONUMENT 404

North Quarter Corner of Section 13, Township 29 North, Range 23 West

October 31, 1847	West corrected between Sections 12 & 13. At 39.90 chains, set 1/4 Section post. W. Oak 16 N9°E 86 "Do" 12 S25°E 83 Issac N. Higbee, Deputy Surveyor
December, 1888	The 1/4 Corner between Sections 12 and 13 was fixed by Gates A. Johnson. Found old iron stake. Ramsey County Resurvey
1896	Set monument. Ramsey County Resurvey
December 31, 1957	Plat of MCCARRON'S VIEW ADDITION shows an iron monument symbol at the corner location. Donald O. Carley, L.S. No. 3527
March 13, 1961	Retied monument. Ramsey County Engineer's Office
March 13, 1975	Found a 4 in. long bolt over a granite monument, down 4-1/4 inches. Ramsey County Surveyor's Office
June 30, 1975	Set a short (4-1/2 in.) cast iron monument. Ramsey County Surveyor's Office
February 19, 1976	Re-tied monument. Ramsey County Surveyor's Office
July 29, 1977	Checked monument. Ramsey County Surveyor's Office
July, 1991	Tied out and removed monument for County road construction. Ramsey County Surveyor's Office
October 13, 1992	Set a 20 in. cast iron monument. Ramsey County Surveyor's Office
July 19, 2002	Tied monument. Ramsey County Surveyor's Office
August 8, 2007	Retied monument. Ramsey County Surveyor's Office
October 3, 2012	Found a "Ramsey County" cast iron monument flush in bituminous road, checked condition of ties. Ramsey County Surveyor's Office
May 3, 2017	Found a CIM. Established offsets and checked local ties prior to road construction. Ramsey County Surveyor's Office
June 1, 2021	Found a CIM. Established offsets and checked local ties prior to gas construction. Ramsey County Surveyor's Office

MONUMENT 404

North Quarter Corner of Section 13, Township 29 North, Range 23 West

June 28, 2023

Placed a 5/8 inch by 7 inch rebar with 3 inch aluminum cap stamped "Ramsey County Surveyor" over a broken cast iron monument, down 10 inches following road construction. Recorded local ties.
Ramsey County Surveyor's Office