

MONUMENT 391

CERTIFICATE OF LOCATION OF GOVERNMENT CORNER

Center of Section 11, Township 29 North, Range 22 West, County of Ramsey, State of Minnesota.

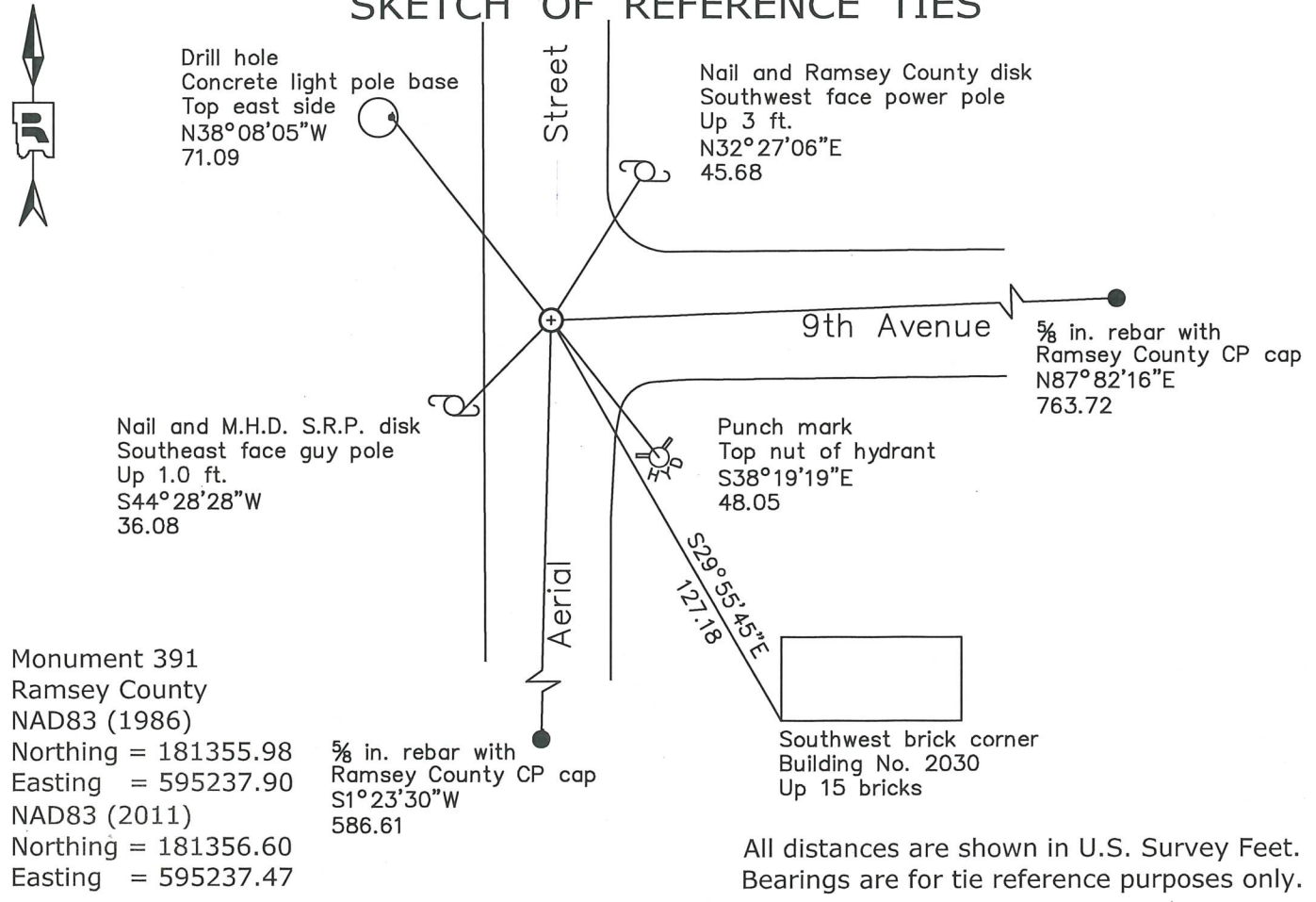
At the corner location shown on the sketch

On May 10, 2022 found a cast iron monument, flush

On November 8, 2022 placed a 5/8 in. by 14 in. rebar with 3 in. aluminum cap stamped

"Ramsey County Surveyor"

SKETCH OF REFERENCE TIES



Statements of evidence relative to this corner are on the following page.

I hereby certify that this survey, plan, or report was prepared by me or under my direct supervision, that I am a duly Licensed Land Surveyor under the laws of the state of Minnesota, and that this certificate is correct and complete to the best of my knowledge and belief.

Devin R. Ball 4/29/24
 Devin R. Ball Date
 Deputy County Surveyor
 Minnesota License No. 56023

OFFICE OF COUNTY SURVEYOR
 County of Ramsey

I hereby certify that this document was filed in the County Surveyor's office this 29th day of April, 20 24.

Daniel D. Baar
 Daniel D. Baar
 Ramsey County Surveyor
 Minnesota License No. 45816

MONUMENT 391

Center of Section 11, Township 29, Range 22

July 25, 1887	Plat of DEARBORN PARK shows a circle monument symbol at the corner. Charles A. Forbes, Surveyor
August, 1896	The Center of Section 11 was fixed by intersection. Set monument. Ramsey County Resurvey
December 31, 1915	Plat of CASTLE WOOD shows a square monument symbol at the corner. John B. Irvine, Surveyor
July 2, 1931	Plat of CASTLE ACRES shows a square monument symbol at the corner. T. J. Welch, Surveyor
December 26, 1973	Plat of TARGET PLAZA ADDITION shows a cast iron monument at the corner. John R. Turpin, R.L.S. 6740
November 1, 1974	Found a cast iron monument flush and tied. Ramsey County Surveyor's Office
May 11, 1981	Checked monument. Ramsey County Surveyor's Office
August 9, 1990	Checked monument. Ramsey County Surveyor's Office
July 6, 1999	Cast iron monument missing due to sewer construction. Ramsey County Surveyor's Office
July 8, 1999	Located position and tied. Ramsey County Surveyor's Office
September 16, 1999	Set a 20 inch cast iron monument flush. Ramsey County Surveyor's Office
November 12, 1999	Cemented monument. Ramsey County Surveyor's Office
August 8, 2006	Tied monument. Ramsey County Surveyor's Office
June 27, 2011	Retied a cast iron monument. Ramsey County Surveyor's Office
August 8, 2016	Found a cast iron monument, flush, and inspected local ties. Ramsey County Surveyor's Office
August 3, 2018	Found a cast iron monument, flush, and inspected local ties. Ramsey County Surveyor's Office
May 4, 2022	Found a cast iron monument, flush, and inspected local ties. Ramsey County Surveyor's Office
May 10, 2022	Found a cast iron monument, flush. Established offsets, and checked local ties prior to removal during road construction. Ramsey County Surveyor's Office

MONUMENT 391

Center of Section 11, Township 29, Range 22

November 8, 2022

Placed a 5/8 inch by 14 inch rebar with 3 inch aluminum cap stamped
"Ramsey County Surveyor" following road construction using offsets.
Recorded local ties.
Ramsey County Surveyor's Office