

MONUMENT 389

CERTIFICATE OF LOCATION OF GOVERNMENT CORNER

Center of Section 10, Township 29 North, Range 22 West, County of Ramsey, State of Minnesota.

At the corner location shown on the sketch

On May 5, 2022 found a cast iron witness monument within cast iron manhole assembly at 389N and 389E.

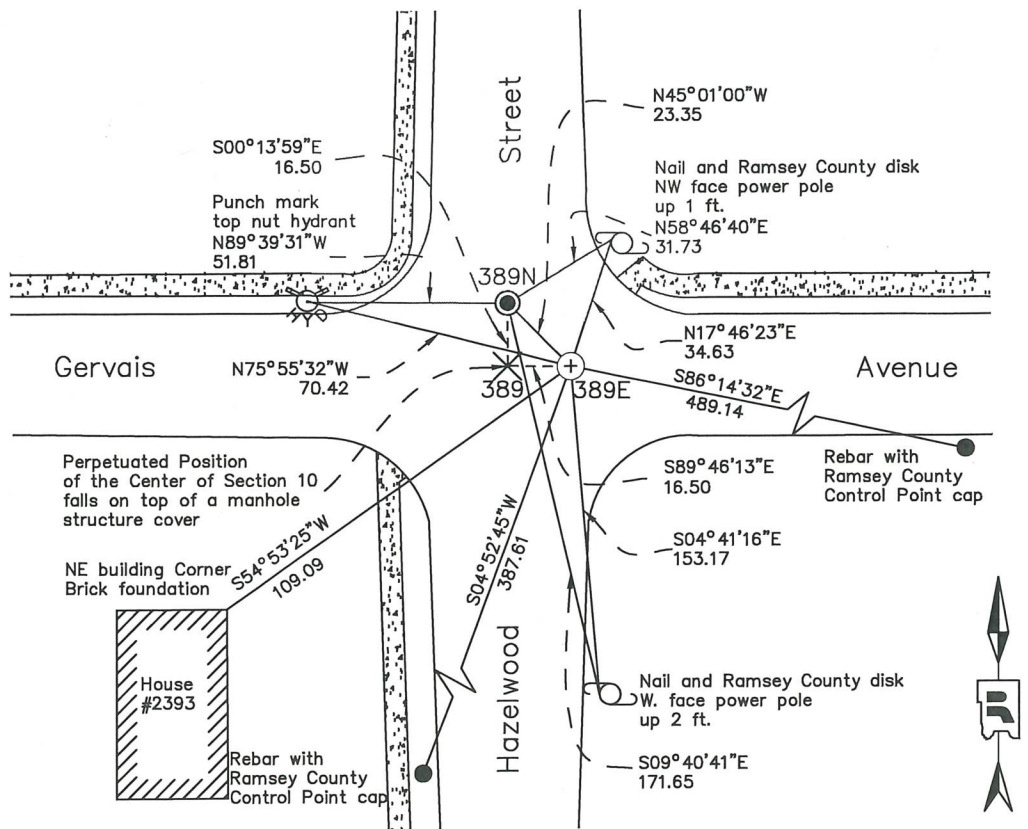
On May 12, 2023 placed a 5/8 inch x 14 inch rebar with 3 inch aluminum cap stamped "Ramsey County Surveyor" at 389E. 389N undisturbed.

SKETCH OF REFERENCE TIES

Corner Position 389
 Ramsey County
 NAD83 (1986)
 Northing = 181334.68
 Easting = 589969.93
 NAD83 (2011)
 Northing = 181335.41
 Easting = 589969.57

Monument 389N
 Ramsey County
 NAD83 (1986)
 Northing = 181351.18
 Easting = 589969.87
 NAD83 (2011)
 Northing = 181351.91
 Easting = 589969.50

Monument 389E
 Ramsey County
 NAD83 (1986)
 Northing = 181334.65
 Easting = 589986.43
 NAD83 (2011)
 Northing = 181335.34
 Easting = 589986.07



All distances are shown in U.S. Survey Feet.
 Bearings are for tie reference purposes only.

Statements of evidence relative to this corner are on the following page.

I hereby certify that this survey, plan, or report was prepared by me or under my direct supervision, that I am a duly Licensed Land Surveyor under the laws of the state of Minnesota, and that this certificate is correct and complete to the best of my knowledge and belief.

Devin R. Ball 6/17/24
 Devin R. Ball Date
 Deputy County Surveyor
 Minnesota License No. 56023

OFFICE OF COUNTY SURVEYOR
 County of Ramsey

I hereby certify that this document was filed in the County Surveyor's office this 23rd day of July, 2024.

Daniel D. Baar
 Daniel D. Baar
 Ramsey County Surveyor
 Minnesota License No. 45816

MONUMENT 389

Center of Section 10, Township 29 North, Range 22 West

October 19, 1900	Fixed the Center of Section 10 by intersection and set monument. Ramsey County Resurvey
May 1, 1939	Monument raised. Ramsey County Engineer's Office
Unknown Date	Found Manhole at location. Put punch mark in top by using old ties from Maplewood City and County Highway Department. Placed cast iron witness monuments 33.00 feet North and East on the Quarter Section lines. No date given in field book. Ramsey County Surveyor's Office
April 10, 1975	Retied monuments. Ramsey County Surveyor's Office
August 9, 1990	Monuments checked. Ramsey County Surveyor's Office
October 13, 1992	Monuments destroyed by the City of Maplewood. Set 20 inch Cast Iron Monuments. Ramsey County Surveyor's Office
June 13, 1997	Removed both Cast Iron Monuments for the City of Maplewood. Ramsey County Surveyor's Office
May 13, 1998	Set 20 inch Cast Iron Monuments and manhole castings at 389N and 389E, 16.5 feet North and East on the Quarter Section line. Ramsey County Surveyor's Office
April 2, 2001	Retied monuments. Ramsey County Surveyor's Office
August 8, 2006	Retied monuments. Ramsey County Surveyor's Office
June 30, 2011	Retied monuments 389N and 389E. Ramsey County Surveyor's Office
June 26, 2013	Tied monuments 389N and 389E for removal during road reconstruction by the City of Maplewood. Ramsey County Surveyor's Office
November 6, 2013	Manhole assemblies for 389N and 389E removed and reset by others. Cast iron monuments not disturbed by construction. Ramsey County Surveyor's Office
August 8, 2016	Retied monuments 389N and 389E. Ramsey County Surveyor's Office
August 3, 2018	Found a cast iron monument within a cast iron manhole assembly at 389N and 389E and inspected local ties. Ramsey County Surveyor's Office

MONUMENT 389

Center of Section 10, Township 29 North, Range 22 West

May 5, 2022

Found a cast iron monument within a cast iron manhole assembly at 389N and 389E. Established offsets and checked local ties prior to removal during road reconstruction by the City of Maplewood.
Ramsey County Surveyor's Office

May 12, 2023

Placed a 5/8 inch by 14 inch rebar with 3 inch aluminum cap stamped "Ramsey County Surveyor" at 389E following road construction using offsets. Recorded local ties. 389N undisturbed.
Ramsey County Surveyor's Office