

MONUMENT 337

CERTIFICATE OF LOCATION OF GOVERNMENT CORNER

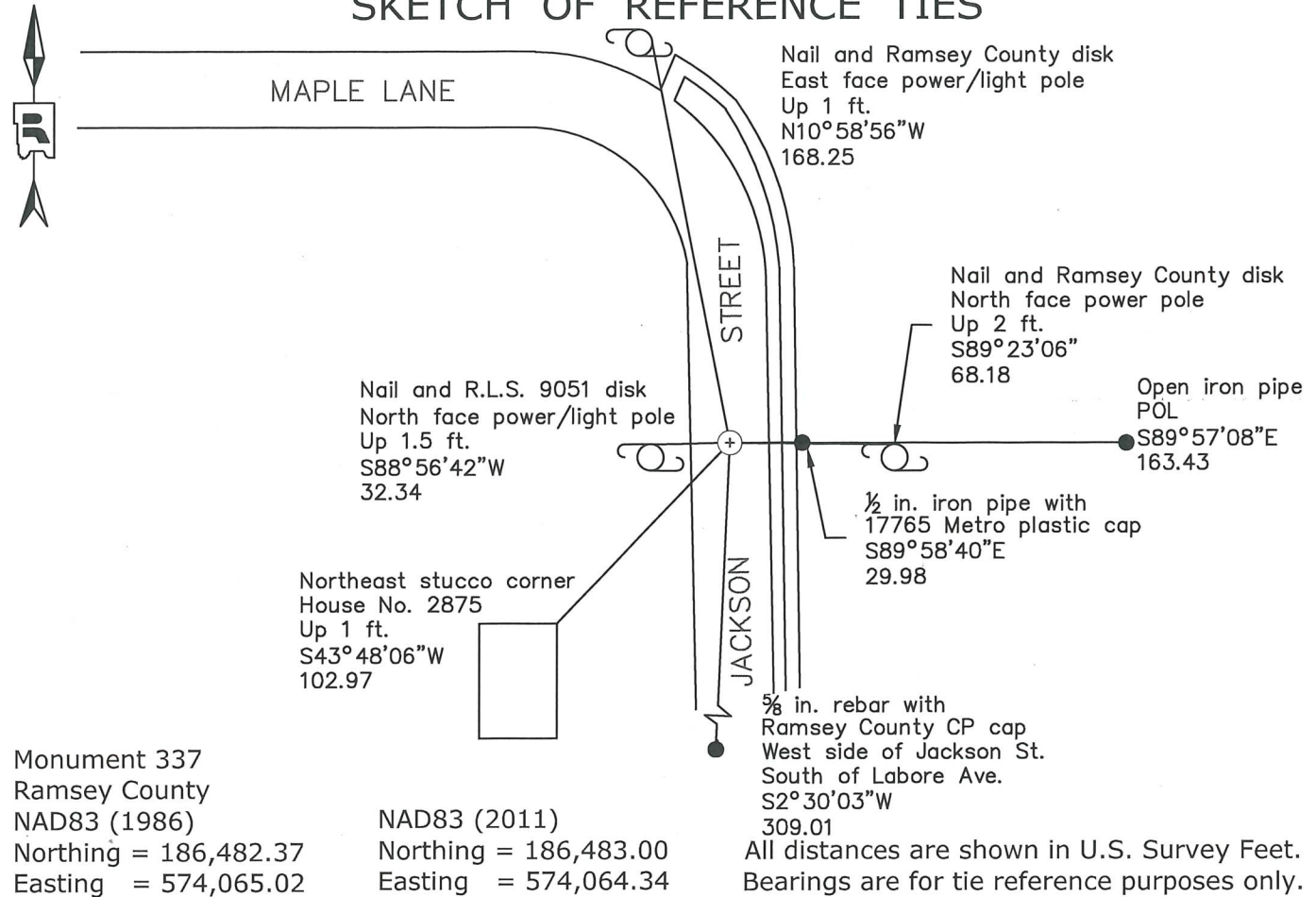
Center of Section 6, Township 29 North, Range 22 West, County of Ramsey, State of Minnesota.

At the corner location shown on the sketch

On May 5, 2022 found a Ramsey County cast iron monument, flush

On October 10, 2022 placed a $\frac{5}{8}$ in. by 14 in. rebar with 3 in. aluminum cap stamped "Ramsey County Surveyor"

SKETCH OF REFERENCE TIES



Statements of evidence relative to this corner are on the following page.

I hereby certify that this survey, plan, or report was prepared by me or under my direct supervision, that I am a duly Licensed Land Surveyor under the laws of the state of Minnesota, and that this certificate is correct and complete to the best of my knowledge and belief.

Devin R. Ball 3/8/24
 Devin R. Ball Date
 Deputy County Surveyor
 Minnesota License No. 56023

OFFICE OF COUNTY SURVEYOR
 County of Ramsey

I hereby certify that this document was filed in the County Surveyor's office this 12th day of March, 20 24.

Daniel D. Baar

Daniel D. Baar
 Ramsey County Surveyor
 Minnesota License No. 45816

MONUMENT 337

Center of Section 6, Township 29, Range 22

June 2, 1898	The Center of Section 6 fixed by intersection, and tied. Ramsey County Resurvey
June 22, 1898	Set monument. Ramsey County Resurvey
May 12, 1926	Plat Showing Land Acquired states granite monument at the Center of Section 6 in the description. Bureau of Water - City of St. Paul (Torrens Survey Doc. 3348)
December, 1963	Certificate of Survey shows a granite monument at the corner. Charles O. Georgi, Registered Land Surveyor No. 3960
August 16, 1974	Found cast iron monument broke off; replaced with a new cast iron monument, flush, and tied (The origin of the cast iron monument has not been determined). Ramsey County Surveyor's Office
September 12, 1977	Checked monument. Ramsey County Surveyor's Office
November 27, 1990	Retied monument. Ramsey County Surveyor's Office
April 20, 1995	Relocated position. Ramsey County Surveyor's Office
1995	Set a 20 inch cast iron monument. Ramsey County Surveyor's Office
July 31, 1998	Tied monument. Ramsey County Surveyor's Office
June 27, 2006	Retied monument. Ramsey County Surveyor's Office
August 10, 2006	Placed concrete around monument. Ramsey County Surveyor's Office
July 12, 2011	Retied cast iron monument, down 0.02 feet in bituminous road. Ramsey County Surveyor's Office
August 3, 2016	Found a cast iron monument, down 0.02 feet in bituminous road, and inspected local ties. Ramsey County Surveyor's Office
August 27, 2018	Found a cast iron monument, down 0.02 feet in bituminous road, and inspected local ties. Ramsey County Surveyor's Office
May 5, 2022	Found a cast iron monument, down 0.02 feet in bituminous road. Established offsets and checked local ties prior to removal during road construction. Ramsey County Surveyor's Office

MONUMENT 337

Center of Section 6, Township 29, Range 22

October 10, 2022

Placed a 5/8 inch by 14 inch rebar with 3 inch aluminum cap stamped
"Ramsey County Surveyor" following road construction using offsets.
Recorded local ties.
Ramsey County Surveyor's Office