

MONUMENT 234

CERTIFICATE OF LOCATION OF GOVERNMENT CORNER

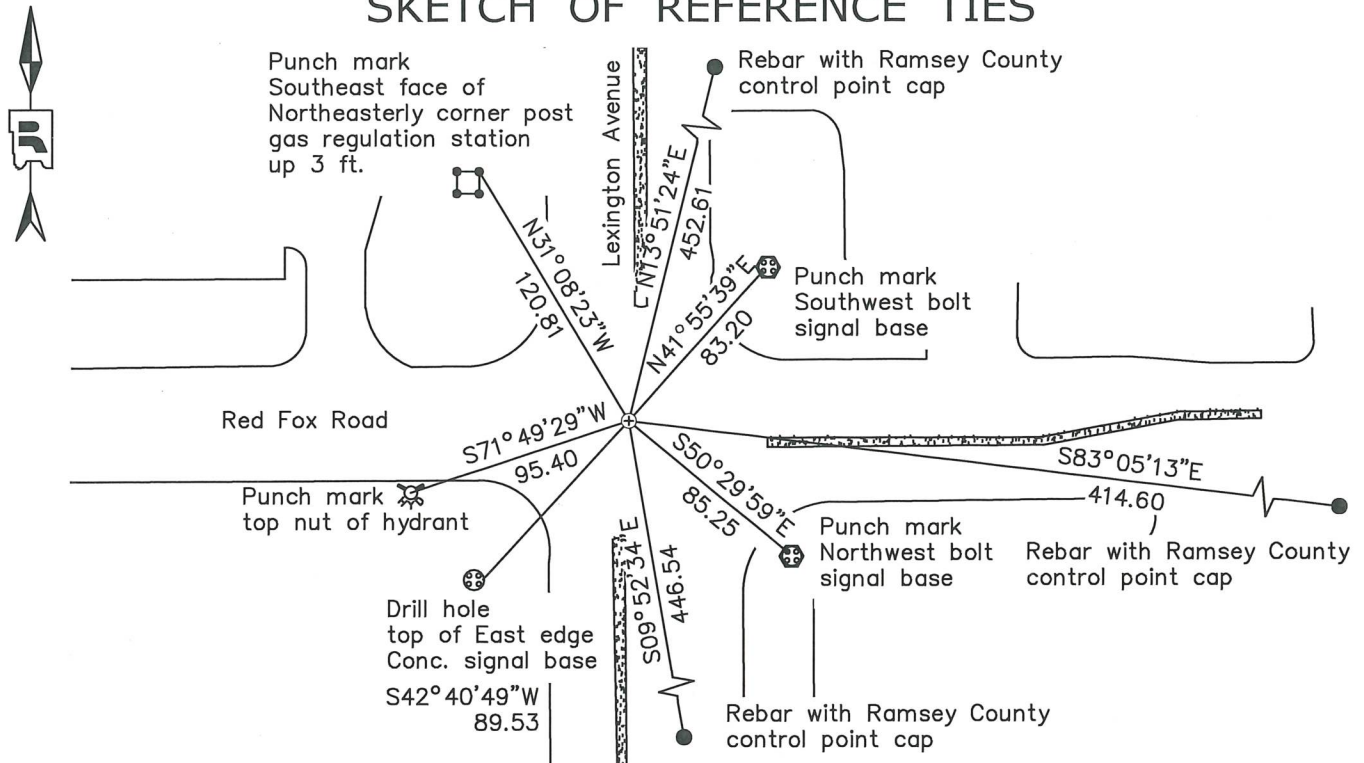
East Quarter Corner of Section 27, Township 30 North, Range 23 West, County of Ramsey, State of Minnesota.

At the corner location shown on the sketch

On May 10, 2022 found a cast iron monument in manhole assembly.

On August 4, 2023 placed a 1 inch copper marker stamped "Ramsey County" in concrete.

SKETCH OF REFERENCE TIES



Monument 234		
Ramsey County		
NAD83 (1986)	NAD83 (2011)	
Northing = 197204.82	Northing = 197205.47	All distances are shown in U.S. Survey Feet.
Easting = 561036.91	Easting = 561036.56	Bearings are for tie reference purposes only.

Statements of evidence relative to this corner are on the following page.

I hereby certify that this survey, plan, or report was prepared by me or under my direct supervision, that I am a duly Licensed Land Surveyor under the laws of the state of Minnesota, and that this certificate is correct and complete to the best of my knowledge and belief.

Devin R. Ball 3/8/24

Devin R. Ball Date
Deputy County Surveyor
Minnesota License No. 56023

OFFICE OF COUNTY SURVEYOR
County of Ramsey

I hereby certify that this document was filed in the County Surveyor's office this 12th day of March, 20 24.

Daniel D. Baar

Daniel D. Baar
Ramsey County Surveyor
Minnesota License No. 45816

MONUMENT 234

East Quarter Corner of Section 27, Township 30 North, Range 23 West

December 16, 1847	At 40.00 chains, set 1/4 Section post B. Oak 12 N85°W77 W. Oak 8 S51 ½°E 1.32 Isaac N. Higbee, Deputy Surveyor
October, 1895	In establishing the 1/4 Corner between Sections 26 and 27, Measured North from Section Corner 2640. Government witness trees gone, Fixed Corner, tied it, and set Monument. Ramsey County Resurvey
November, 1943	Checked monument. Ramsey County Engineer's Office
January, 1946	Checked monument. Ramsey County Engineer's Office
July 15, 1975	Found boat spike at surface. Dug down 3.1 ft. and found nothing. Ramsey County Surveyor's Office
June 4, 1976	Dug 5.25 ft. and found granite monument in old road surface (bitu.) Ramsey County Surveyor's Office
June 23, 1976	Placed 20 in. cast iron. Ramsey County Surveyor's Office
Unknown	Removed for Const. Dept. of County. Replaced 20 in. cast iron. Ramsey County Surveyor's Office
April 17, 1978	Tied monument. Ramsey County Surveyor's Office
June 5, 1990	Tied monument. Ramsey County Surveyor's Office
December 1, 1998	Retied monument. Ramsey County Surveyor's Office
April 23, 2000	Tied monument for Const. Ramsey County Surveyor's Office
May 4, 2000	Lowered monument; set 12 in. tube. Ramsey County Surveyor's Office
June 20, 2000	Set MH assembly. Ramsey County Surveyor's Office
July 31, 2007	Tied Monument. Ramsey County Surveyor's Office
August 17, 2012	Checked condition of C.I.M. in C.I.M.H. and ties. Ramsey County Surveyor's Office
July 24, 2019	Found a cast iron manhole assembly and inspected local ties. Ramsey County Surveyor's Office

MONUMENT 234

East Quarter Corner of Section 27, Township 30 North, Range 23 West

May 10, 2022

Found a cast iron monument in manhole assembly. Established offsets and checked local ties prior to removal during road construction.
Ramsey County Surveyor's Office

August 4, 2023

Placed 1 in. copper marker stamped "Ramsey County" in concrete following road construction using offsets. Recorded local ties.
Ramsey County Surveyor's Office