

# MONUMENT 230E

## CERTIFICATE OF LOCATION OF GOVERNMENT CORNER

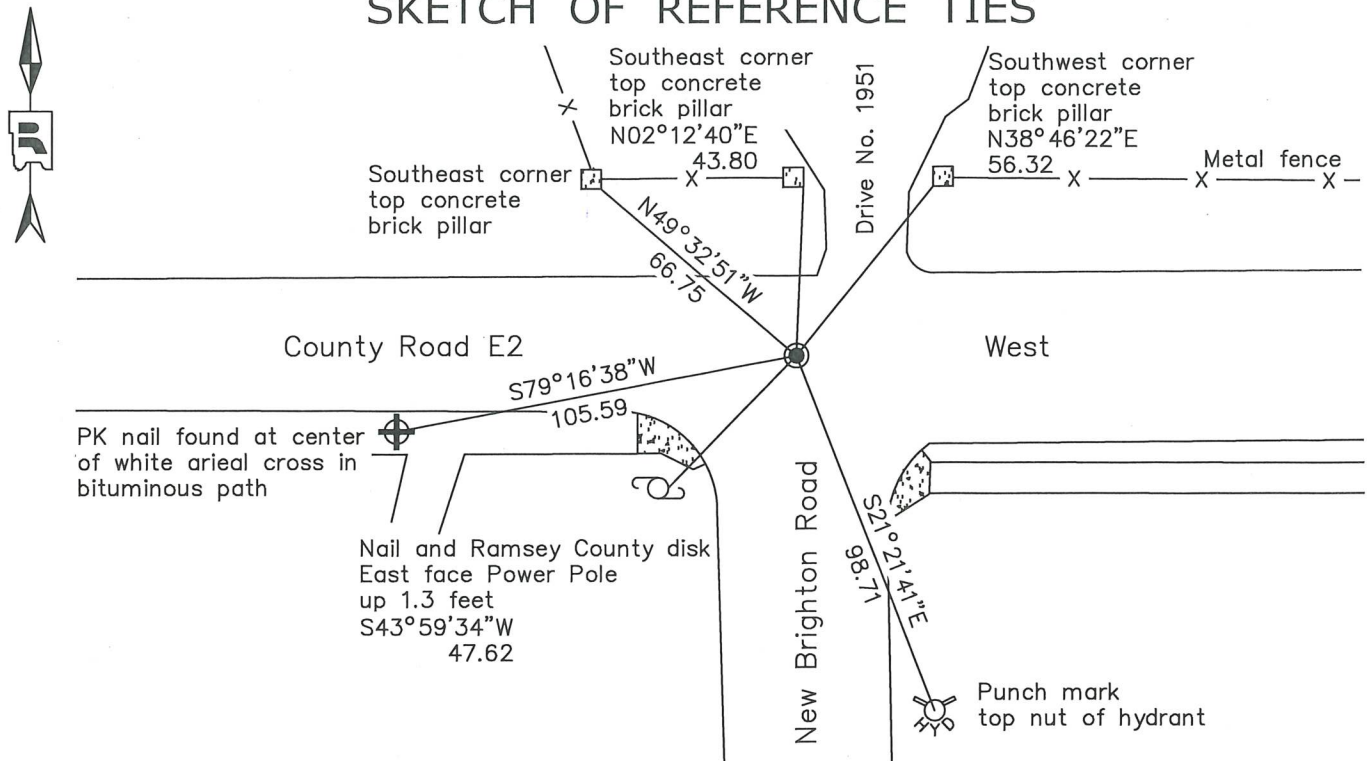
Center West 1/16 Corner of Section 28, Township 30 North, Range 23 West, County of Ramsey, State of Minnesota.

At the corner location shown on the sketch

On December 6, 2023 found a cast iron monument within a cast iron manhole assembly.

On \_\_\_\_\_ placed a \_\_\_\_\_

### SKETCH OF REFERENCE TIES



Monument 230E

Ramsey County

NAD83 (1986)

Northing = 197149.82

Easting = 551810.25

NAD83 (2011)

Northing = 197150.41

Easting = 551809.88

All distances are shown in U.S. Survey Feet.

Bearings are for tie reference purposes only.

Statements of evidence relative to this corner are on the following page.

I hereby certify that this survey, plan, or report was prepared by me or under my direct supervision, that I am a duly Licensed Land Surveyor under the laws of the state of Minnesota, and that this certificate is correct and complete to the best of my knowledge and belief.

*Devin R. Ball* 5/20/24

Devin R. Ball

Date

Deputy County Surveyor

Minnesota License No. 56023

OFFICE OF COUNTY SURVEYOR

County of Ramsey

I hereby certify that this document was filed in the County Surveyor's office this 20<sup>th</sup> day of May, 2024.

*Daniel D. Baar*

Daniel D. Baar

Ramsey County Surveyor

Minnesota License No. 45816

# MONUMENT 230E

Center West 1/16 Corner of Section 28, Township 30 North, Range 23 West

Circa 1900	The Ramsey County Resurvey sketch shows a black circle monument symbol at the midpoint of the West 1/4 Corner and Center of Section 28. However there is no description of the corner on the notes page. Ramsey County Resurvey
May 3, 1938	The plat of RHOLEDER'S HOME AND GARDEN ACRES shows an iron monument at the corner. Lynn J Lubins R.L.S. 914
March, 1954	Plat of Survey by R.C. Wolfgram shows an iron monument at the corner. R.C. Wolfgram R.L.S. 1340
November 13, 1962	Found iron pin 0.29 feet south of Centerline Alignment of County Road E2 at the corner. Ramsey County Engineer's Office
Circa 1963	Iron pipe most likely removed due to excavation at the corner location during County Road E-2 S.A.P. 62-673-01 construction. A granite monument was most likely set in its place either during or following road construction. Ramsey County Engineer's Office
May 24, 1977	Found a granite monument, flush. Ramsey County Surveyor's Office
April 25, 1984	Tied monument, down +/- 0.3 feet. Ramsey County Surveyor's Office
January 9, 1992	Retied monument. Ramsey County Surveyor's Office
November 25, 1998	Retied monument. Ramsey County Surveyor's Office
May 15, 2001	Tied monument for road milling. Ramsey County Surveyor's Office
June 13, 2002	Found granite monument milled off, hole gone; relocated position and checked. Set cast iron manhole assembly around monument. Ramsey County Surveyor's Office
June 14, 2002	Set short cast iron on top of granite monument, cemented in and tied. Ramsey County Surveyor's Office
July 02, 2009	Retied monument. Ramsey County Surveyor's Office
June 6, 2014	Found a cast iron monument in cast iron manhole assembly and recorded local ties. Ramsey County Surveyor's Office
August 12, 2019	Found a cast iron monument in cast iron manhole assembly and recorded local ties. Ramsey County Surveyor's Office

# MONUMENT 230E

Center West 1/16 Corner of Section 28, Township 30 North, Range 23 West

December 6, 2023

Found a cast iron monument in cast iron manhole assembly and recorded local ties.  
Ramsey County Surveyor's Office