

# MONUMENT 229

## CERTIFICATE OF LOCATION OF GOVERNMENT CORNER

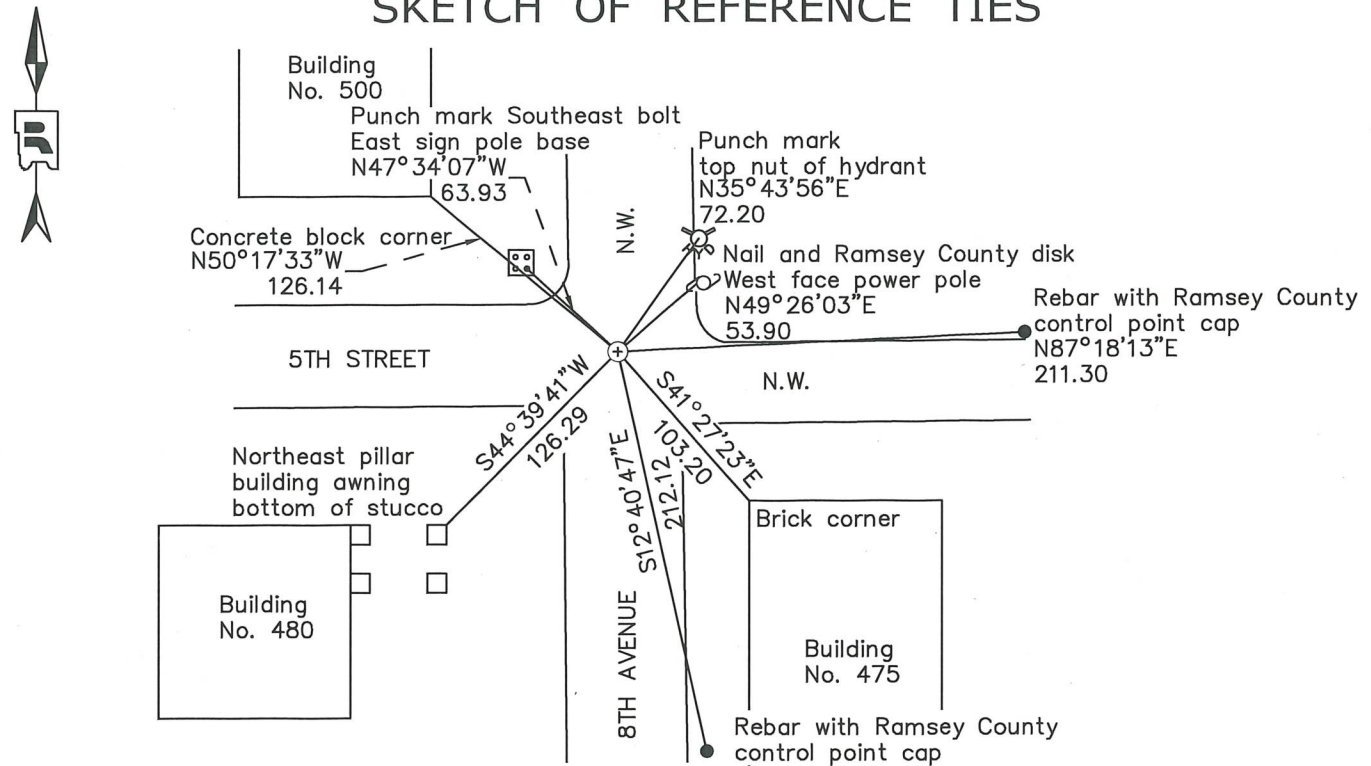
Center of Section 29, Township 30 North, Range 23 West, County of Ramsey, State of Minnesota.

At the corner location shown on the sketch

On July 13, 2021 found a cast iron monument, down .01 feet.

On July 31, 2023 placed a 5/8 inch x 14 inch rebar with 3 inch aluminum cap stamped "Ramsey County Surveyor".

### SKETCH OF REFERENCE TIES



Monument 229		
Ramsey County		
NAD83 (1986)	NAD83 (2011)	
Northing = 197142.53	Northing = 197143.19	All distances are shown in U.S. Survey Feet.
Easting = 547872.99	Easting = 547872.48	Bearings are for tie reference purposes only.

Statements of evidence relative to this corner are on the following page.

I hereby certify that this survey, plan, or report was prepared by me or under my direct supervision, that I am a duly Licensed Land Surveyor under the laws of the state of Minnesota, and that this certificate is correct and complete to the best of my knowledge and belief.

Devin R. Ball      3/12/24

Devin R. Ball      Date  
Deputy County Surveyor  
Minnesota License No. 56023

OFFICE OF COUNTY SURVEYOR  
County of Ramsey

I hereby certify that this document was filed in the County Surveyor's office this 12<sup>th</sup> day of March, 20 24.

Daniel D. Baar

Daniel D. Baar  
Ramsey County Surveyor  
Minnesota License No. 45816

# MONUMENT 229

Center of Section 29, Township 30, Range 23

September 21, 1900	Found old Stake at Center of Section 29. Gates A. Johnson Field Books
Circa 1900	The Ramsey County Resurvey sketch shows a red square monument symbol at the Center of Section 29. However, there is no description of the corner on the notes page. Ramsey County Resurvey
September 1, 1927	Found an 8 inch by 8 inch square stone monument at the Center of Section 29 prior to road construction. Placed a brass plug in concrete pavement following road construction to perpetuate the location of the square stone monument. Established two reference or witness monuments. Certificate of Location of Government Corner (Doc. # A775808) T.H. Johnston, Minnesota State Highway Commission
November, 1943	Checked brass plug monument. Ramsey County Engineer's Office
December, 1946	Checked brass plug monument. Ramsey County Engineer's Office
Circa 1970's	Found brass plug by Frank Kvidera (Co. Hwy Dept.) who dug and found granite monu.. Re-tied granite monu. which is down 0.85 ft.. Not exactly under brass plug. Street to be graded. Monu. will be destroyed. See Survey Book No. 2 Page 10 Ramsey County Surveyor's Office
October 10, 1975	Resurveyed as per notes Survey Book No. 2, page 10 and placed a cast iron monument. Ramsey County Surveyor's Office
June 19, 1991	Retied monument. Ramsey County Surveyor's Office
November 1, 2002	Retied monument. Ramsey County Surveyor's Office
July 2, 2009	Retied monument, down 0.1 feet. Ramsey County Surveyor's Office
August 8, 2019	Found a cast iron monument, down 0.1 feet and inspected local ties. Ramsey County Surveyor's Office
July 13, 2021	Found a cast iron monument, in bituminous road. Established offsets and checked local ties prior to removal during road construction. Ramsey County Surveyor's Office
July 31, 2023	Placed a 5/8 inch by 14 inch rebar with 3 inch aluminum cap stamped "Ramsey County Surveyor" following road construction using offsets. Recorded local ties. Ramsey County Surveyor's Office