

MONUMENT 179N

CERTIFICATE OF LOCATION OF GOVERNMENT CORNER

Monument on the North-South Quarter line, North of Center of Section 20, Township 30 North, Range 23 West, County of Ramsey, State of Minnesota.

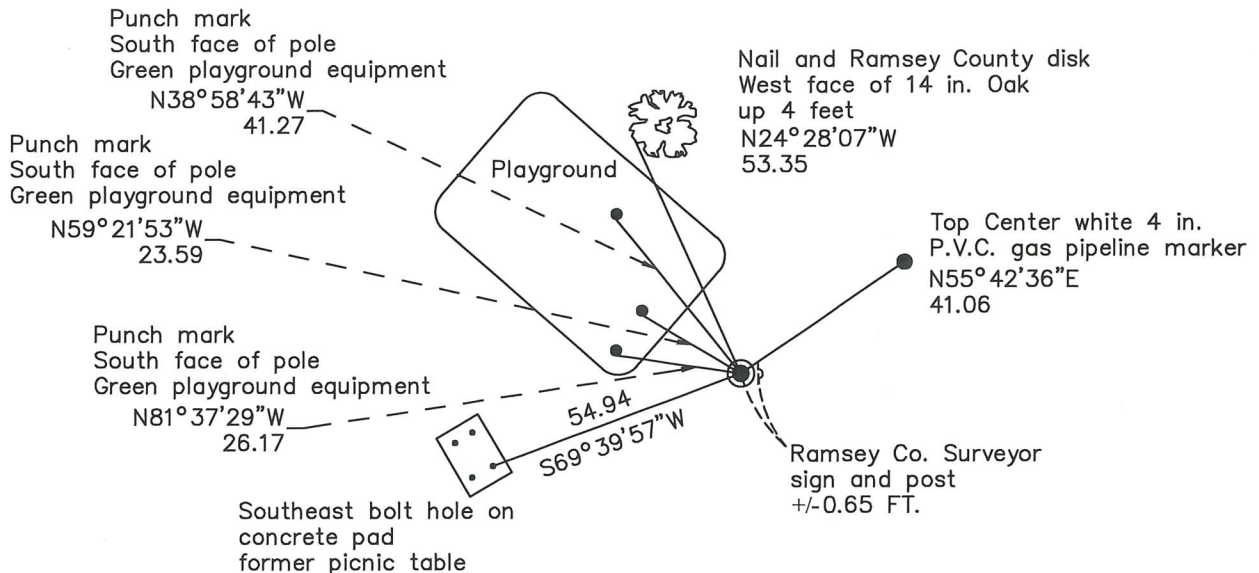
At the corner location shown on the sketch

On October 2, 2023 found a "Ramsey County" cast iron monument, down 0.2 feet.

On _____ placed a _____

SKETCH OF REFERENCE TIES

Long Lake Regional Park
Beach Area



Monument 179N

Ramsey County

NAD83 (1986)

Northing = 203368.03

Easting = 547813.15

NAD83 (2011)

Northing = 203368.63

Easting = 547812.77

All distances are shown in U.S. Survey Feet.

Bearings are for tie reference purposes only.

Statements of evidence relative to this corner are on the following page.

I hereby certify that this survey, plan, or report was prepared by me or under my direct supervision, that I am a duly Licensed Land Surveyor under the laws of the state of Minnesota, and that this certificate is correct and complete to the best of my knowledge and belief.

Devin R. Ball 3/6/24

Devin R. Ball

Date

Deputy County Surveyor

Minnesota License No. 56023

OFFICE OF COUNTY SURVEYOR

County of Ramsey

I hereby certify that this document was filed in the County Surveyor's office this 12th day of March, 20 24.

Daniel D. Baar

Daniel D. Baar

Ramsey County Surveyor

Minnesota License No. 45816

MONUMENT 179N

Monument on the North-South Quarter Line, North of Center of Section 20, Township 30, Range 23

February 3, 1903	Fixed the Center of Section 20 by Intersection and set Monuments on shore of lake. Ramsey County Resurvey
March, 1968	Checked granite reference monument. Ramsey County Engineer's Office
March 31, 1983	Found a granite monument in open field. Ramsey County Surveyor's Office
Summer, 1983	Traversed through monument. Ramsey County Surveyor's Office
August 1, 1989	Park constructed; monument not visible. Found granite monument down +/- 22 in. Does not check with traverse. Set a 20 in. cast iron monument to grade as per traverse, retied. Ramsey County Surveyor's Office
October 29, 1999	Set a sign and post 4 in. south of monument and retied. Ramsey County Surveyor's Office
November 10, 2004	Retied monument. Ramsey County Surveyor's Office
September 29, 2009	Retied monument. Ramsey County Surveyor's Office
August 1, 2014	Retied monument. Ramsey County Surveyor's Office
September 19, 2019	Found a cast iron monument and inspected local ties. Ramsey County Surveyor's Office.
August 4, 2023	Found a cast iron monument and inspected local ties. Ramsey County Surveyor's Office
October 2, 2023	Found a cast iron monument and recorded new local ties. Ramsey County Surveyor's Office