

MONUMENT 178E

CERTIFICATE OF LOCATION OF GOVERNMENT CORNER

Witness Monument West of Center of Section 20, Township 30 North, Range 23 West,
County of Ramsey, State of Minnesota.

At the corner location shown on the sketch

On December 6, 2023 found a granite monument, down 0.1 feet

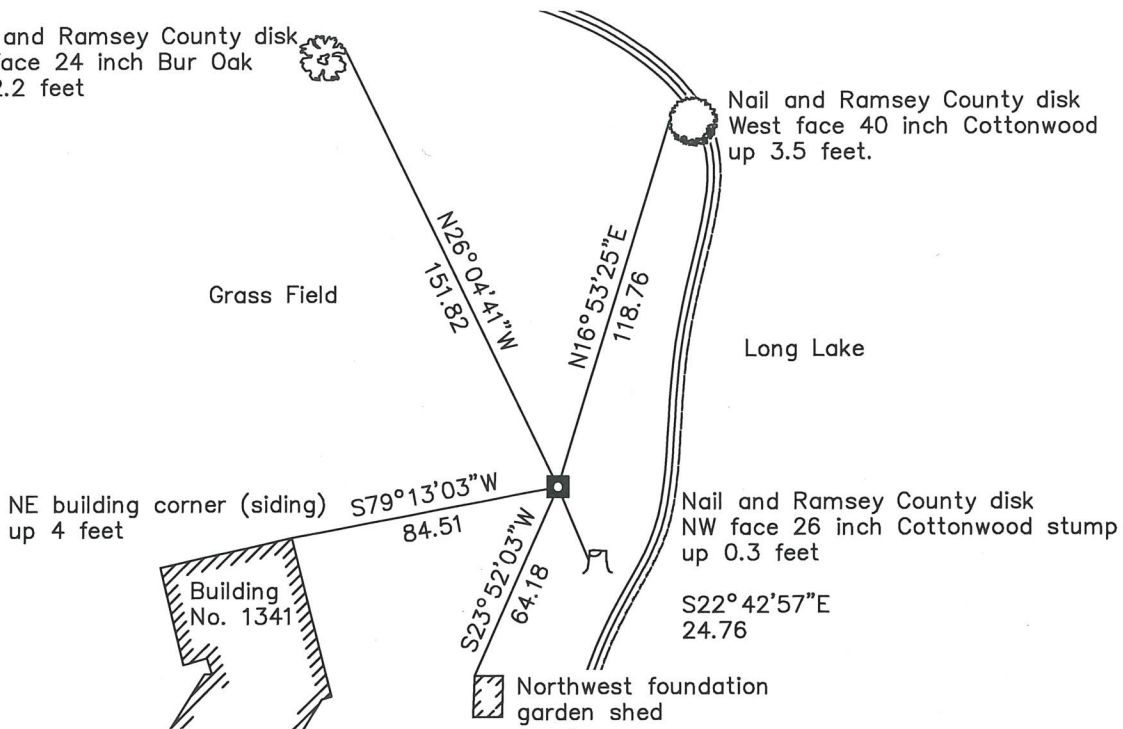
On _____ placed a _____

SKETCH OF REFERENCE TIES



Nail and Ramsey County disk
NE face 24 inch Bur Oak
up 2.2 feet

Nail and Ramsey County disk
West face 40 inch Cottonwood
up 3.5 feet.



Monument 178E

Ramsey County

NAD83 (1986)

Northing = 202411.44

Easting = 546684.84

NAD83 (2011)

Northing = 202411.95

Easting = 546684.50

All distances are shown in U.S. Survey Feet.

Bearings are for tie reference purposes only.

Statements of evidence relative to this corner are on the following page.

I hereby certify that this survey, plan, or report was prepared by me or under my direct supervision, that I am a duly Licensed Land Surveyor under the laws of the state of Minnesota, and that this certificate is correct and complete to the best of my knowledge and belief.

Devin R. Ball 3/8/24

Devin R. Ball
Deputy County Surveyor
Minnesota License No. 56023

Date

OFFICE OF COUNTY SURVEYOR

County of Ramsey

I hereby certify that this document was filed in the County Surveyor's office this 12th day of March, 20 24.

Daniel D. Baar

Daniel D. Baar
Ramsey County Surveyor
Minnesota License No. 45816

MONUMENT 178E

Witness Monument West of Center of Section 20, Township 30 North, Range 23 West

February 3, 1903	Fixed the Center of Section 20 by Intersection and set Monuments on the shore of lake. Ramsey County Resurvey
December, 1943	Checked granite reference monument. Ramsey county Engineer's Office
March, 1968	Checked granite reference monument. Ramsey county Engineer's Office
Circa, 1983	Found a granite monument. Ramsey County Surveyor's Office
October 5, 1988	Tied monument, down +/- 6 inches. Ramsey County Surveyor's Office
October 11, 2001	Retied granite monument, down 6 inches. Ramsey County Surveyor's Office
July 23, 2009	Retied monument. Ramsey County Surveyor's Office
August 25, 2014	Found granite monument, down 0.3 feet and inspected local ties. Ramsey County Surveyor's Office
September 19, 2019	Found granite monument, down 0.1 feet and inspected local ties. Ramsey County Surveyor's Office
August 11, 2023	Found a granite monument and inspected local ties. Ramsey County Surveyor's Office
December 6, 2023	Found granite monument, down 0.1 feet and recorded local ties. Ramsey County Surveyor's Office