

# MONUMENT 576

## CERTIFICATE OF LOCATION OF GOVERNMENT CORNER

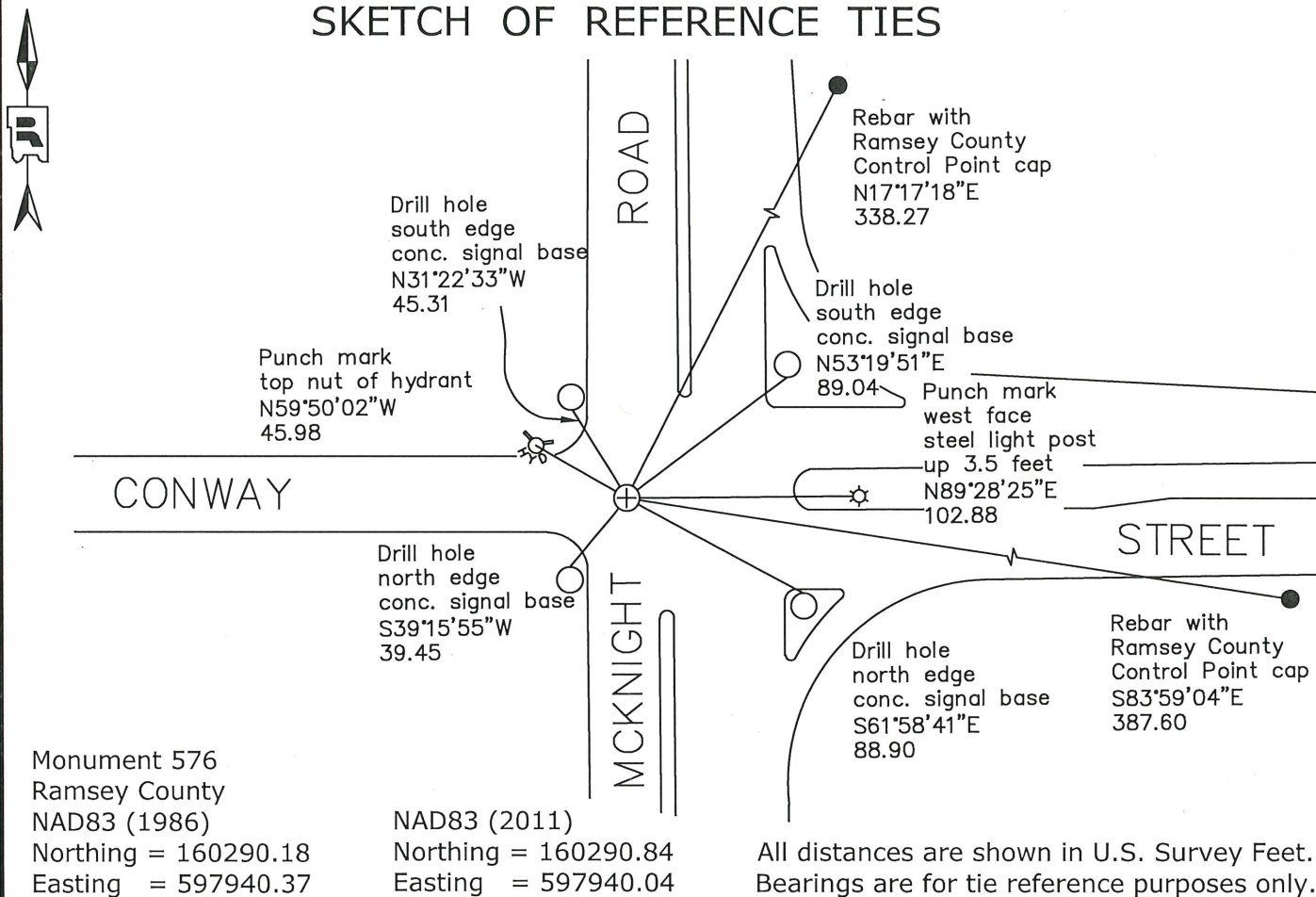
East 1/4 Corner of Section 35, Township 29 North, Range 22 West, County of Ramsey, State of Minnesota.

At the corner location shown on the sketch

On August 23, 2021 found a cast iron monument, flush.

On November 2, 2021 placed a 5/8 inch by 14 inch rebar with 3 inch aluminum cap stamped " Ramsey County Surveyor".

### SKETCH OF REFERENCE TIES



Statements of evidence relative to this corner are on the following page.

I hereby certify that this survey, plan, or report was prepared by me or under my direct supervision, that I am a duly Licensed Land Surveyor under the laws of the state of Minnesota, and that this certificate is correct and complete to the best of my knowledge and belief.

*Devin R. Ball* 6/14/23

Devin R. Ball  
Deputy County Surveyor  
Minnesota License No. 56023

OFFICE OF COUNTY SURVEYOR  
County of Ramsey

I hereby certify that this document was filed in the County Surveyor's office this 14<sup>th</sup> day of June, 20 23.

*Daniel D. Baar*

Daniel D. Baar  
Ramsey County Surveyor  
Minnesota License No. 45816

# MONUMENT 576

East 1/4 Corner of Section 35, Township 29, Range 22

November 24, 1847	North between section 35 & 36. At 40.00 chains, set 1/4 Section Post. Bur Oak 13 N10° W 28 "Do" 10 S°15E 42 Isaac N. Higbee, Deputy Surveyor
January 14, 1891	Monument was set by J.H. Armstrong. City of Saint Paul Surveyor's Office
February 6, 1934	Tied granite monument 2 in. below surface. City of Saint Paul Surveyor's Office
September 14, 1953	Retied monument. Field notes show a square monument symbol at corner. City of Saint Paul Surveyor's Office
February 16, 1956	Plat of SUN-RAY TERRACE ADDITION NO. 1 shows a square monument symbol at corner. Warren I. Forsberg, Registered Land Surveyor No. 4840
June 19, 1972	Removed cast iron pin and replaced with a cast iron monument set in concrete. City of Saint Paul Surveyor's Office
May 8, 1975	Found a cast iron monument, flush. Ramsey County Surveyor's Office
June 8, 1990	Tied out monument. Ramsey County Surveyor's Office
September 1991	Monument destroyed by storm sewer construction. Relocated position and set P.K. nails and tied out, no date given in field book. Ramsey County Surveyor's Office and City of St. Paul Surveyor's Office
November 20, 1991	Set a 4 5/8 in. cast iron monument in concrete. Ramsey County Surveyor's Office
April 15, 2003	Retied monument, flush. Ramsey County Surveyor's Office
May 21, 2008	Retied cast iron monument, flush. Ramsey County Surveyor's Office
May 13, 2013	Checked a "Ramsey County" cast iron monument, flush in bituminous; and ties. Ramsey County Surveyor's Office
June 30, 2017	Found a cast iron monument, flush and inspected local ties. Ramsey County Surveyor's Office
August 23, 2021	Found a cast iron monument, flush. Established offsets and checked local ties prior to removal during road construction. Ramsey County Surveyor's Office
November 2, 2021	Placed a 5/8 inch by 14 inch rebar with 3 inch aluminum cap stamped "Ramsey County Surveyor" following road construction using offsets. Recorded local ties. Ramsey County Surveyor's Office