

MONUMENT 95N

CERTIFICATE OF LOCATION OF GOVERNMENT CORNER

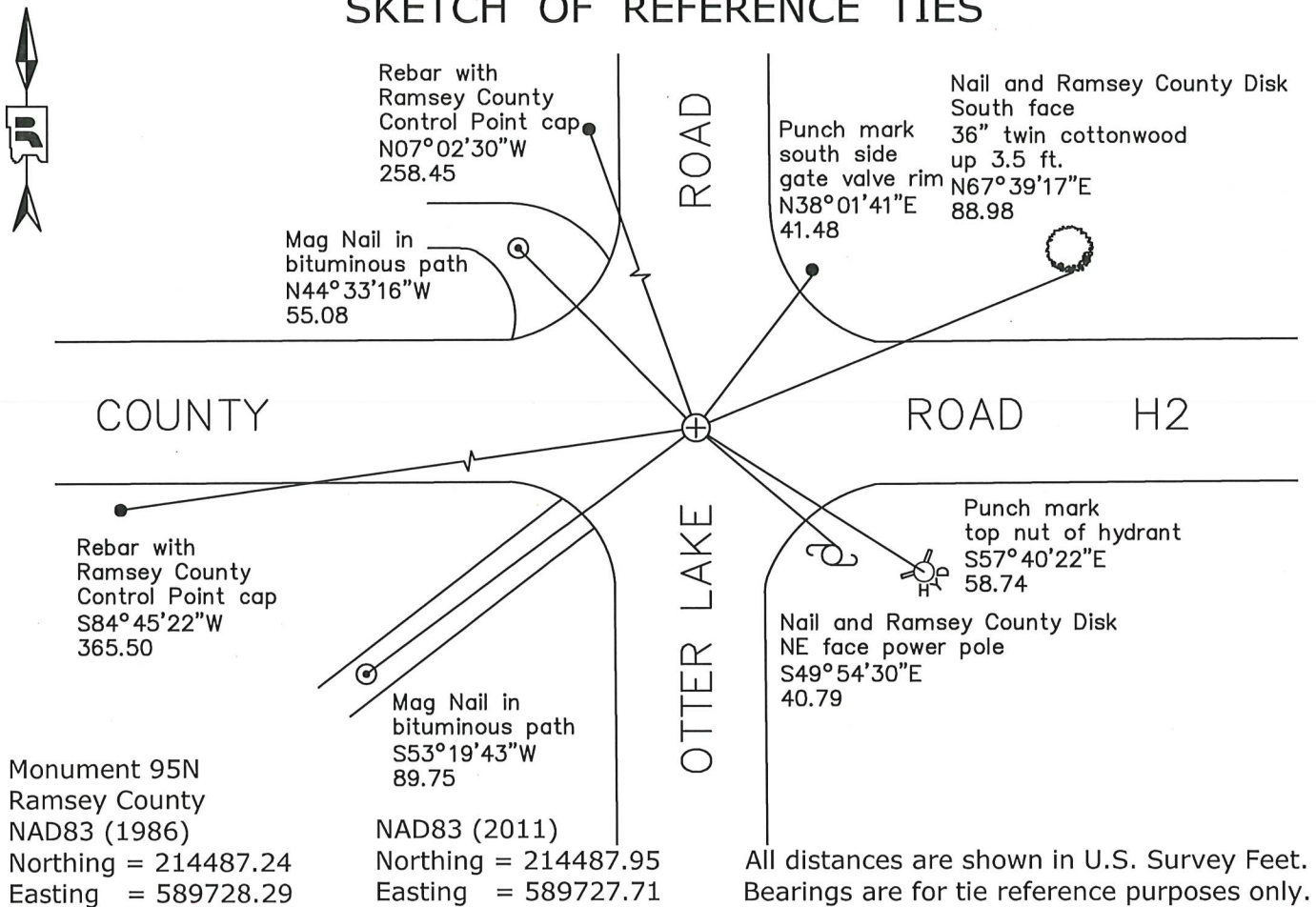
Center North $\frac{1}{16}$ Corner of Section 10, Township 30 North, Range 22 West, County of Ramsey, State of Minnesota.

At the corner location shown on the sketch

On May 1, 2020 found a cast iron monument within a cast iron manhole assembly.

On August 27, 2020 placed a $\frac{5}{8}$ inch by 14 inch rebar with 3 inch aluminum cap stamped "Ramsey County Surveyor".

SKETCH OF REFERENCE TIES



Statements of evidence relative to this corner are on the following page.

I hereby certify that this survey, plan, or report was prepared by me or under my direct supervision, that I am a duly Licensed Land Surveyor under the laws of the state of Minnesota, and that this certificate is correct and complete to the best of my knowledge and belief.

Devin R. Ball 4/6/22
 Devin R. Ball Date
 Deputy County Surveyor
 Minnesota License No. 56023

OFFICE OF COUNTY SURVEYOR
 County of Ramsey

I hereby certify that this document was filed in the County Surveyor's office this 7th day of April, 20 22.

Daniel D. Baar
 Daniel D. Baar
 Ramsey County Surveyor
 Minnesota License No. 45816

MONUMENT 95N

Center North $\frac{1}{16}$ Corner of Section 10, Township 30, Range 22

Between 1896 and 1897, the Ramsey County Resurvey established the Northeast Corner of the Southeast Quarter of the Northwest Quarter of Section 10 to aide in the establishments of the meander corners around Otter Lake. The drawing of the Resurvey shows an unknown type of monument with ties associated with it.

February 1946	Bolt Spike checked and tied out. Ramsey County Engineering Office
Unknown Date	Placed a 20 in. cast iron monument; no date given in book. Ramsey County Surveyor's Office
September 3, 1993	Cast iron monument gone; found bolt spike and dug for cast iron monument; found $\frac{3}{4}$ in. open iron pipe down +/- 0.9 ft.; set a 20 in. cast iron monument and tied out. Ramsey County Surveyor's Office
July 30, 1998	Lowered cast iron monument 18 in. Ramsey County Surveyor's Office
August 31, 1998	Set a cast iron manhole assembly over a 20 in. cast iron monument. Ramsey County Surveyor's Office
April 14 and 21, 1999	Retired monument and adjusted. Ramsey County Surveyor's Office
October 26, 2004	Retied monument. Ramsey County Surveyor's Office
October 13, 2009	Retied monument. Ramsey County Surveyor's Office
April 25, 2014	Found a cast iron monument within a cast iron manhole assembly and inspected ties. Ramsey County Surveyor's Office
May 22, 2014	Retied monument. Ramsey County Surveyor's Office
May 1, 2020	Found a cast iron monument within a cast iron manhole assembly. Established offsets and checked local ties prior to removal during road construction. Ramsey County Surveyor's Office
August 27, 2020	Placed a $\frac{5}{8}$ inch by 14 inch rebar with 3 inch aluminum cap stamped "Ramsey County Surveyor" following road construction using offsets. Recorded local ties. Ramsey County Surveyor's Office