

# MONUMENT 645

## CERTIFICATE OF LOCATION OF GOVERNMENT CORNER

Northeast Corner of Section 11, Township 28 North, Range 22 West, County of Ramsey, State of Minnesota.

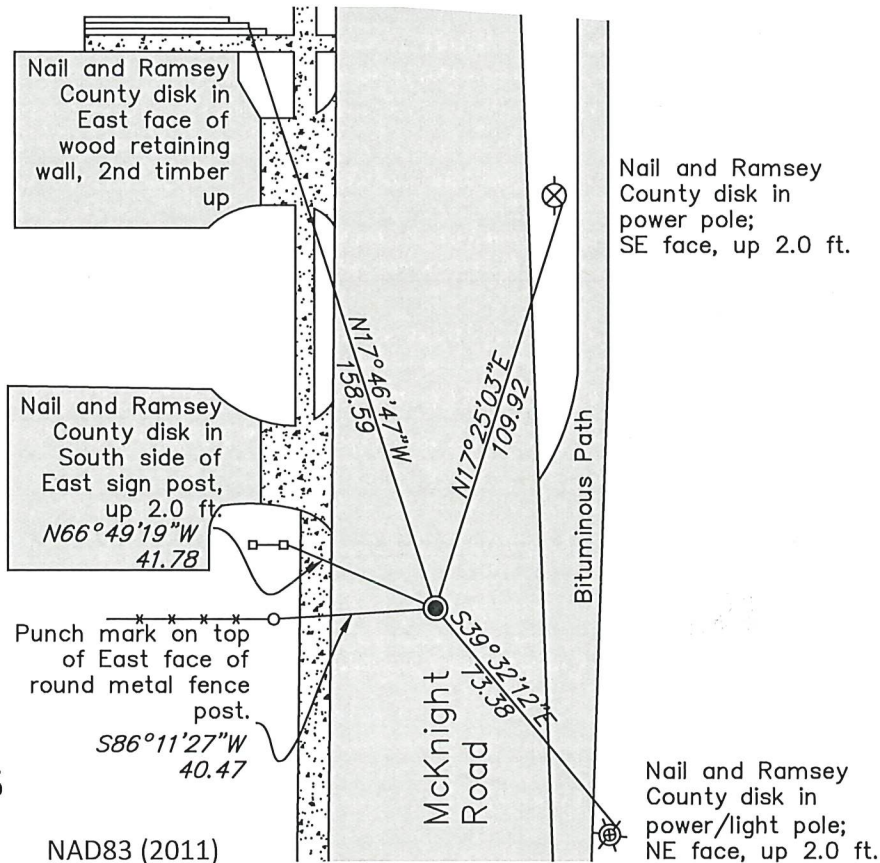
At the corner location shown on the sketch

On July 12, 2017 found a cast iron monument, within a cast iron manhole assembly.

left monument as found       raised/lowered monument       removed monument (explain)

On \_\_\_\_\_ placed a \_\_\_\_\_

### SKETCH OF REFERENCE TIES



### MONUMENT 645

RAMSEY COUNTY  
 NAD83 (1986)      NAD83 (2011)  
 Northing = 152268.154      Northing = 152268.827  
 Easting = 598030.535      Easting = 598030.291

ALL DISTANCES ARE SHOWN IN U.S. SURVEY FEET.  
 BEARINGS ARE FOR TIE REFERENCE PURPOSES ONLY.

Statements of evidence relative to this corner are on the following page.

I hereby certify that this survey, plan, or report was prepared by me or under my direct supervision, that I am a duly Licensed Land Surveyor under the laws of the state of Minnesota, and that this certificate is correct and complete to the best of my knowledge and belief.

Daniel D. Baar  
 Daniel D. Baar      Date  
 Ramsey County Surveyor  
 Minnesota License No. 45816

OFFICE OF COUNTY SURVEYOR  
 County of Ramsey

I hereby certify that this document was filed in the County Surveyor's office this 17<sup>th</sup> day of May, 20 22.

Daniel D. Baar  
 Daniel D. Baar, L.S.  
 Ramsey County Surveyor

# MONUMENT 645

Northeast Corner of Section 11, Township 28, Range 22

- October 27, 1847 Set post Corner to Sections 1, 2, 11, & 12, Black Oak 18 S52°E 194, Black Oak 16 N36°W 218. Isaac Higbee, Deputy Surveyor
- March, 1891 Monument set by J.H. Armstrong. City of St. Paul Land Survey Office
- February 8, 1934 Placed ties on granite monument. City of St. Paul Land Survey Office
- Unknown Date Found cast iron monument set by the City of St. Paul.  
City of St. Paul Land Survey Office
- May 18, 1998 Tied monument for road maintenance. Ramsey County Surveyor's Office
- August 27, 1998 Removed cast iron monument for road maintenance; found 1 1/2 in. iron down 2.3 ft. from road surface and 0.5 ft. Southwesterly; set 20 in. cast iron monument in a cast iron manhole assembly at tie location.  
Ramsey County Surveyor's Office
- July 21, 2006 Tied monument. Ramsey County Surveyor's Office
- June 6, 2011 Retied cast iron monument, within cast iron manhole assembly.  
Ramsey County Surveyor's Office
- August 1, 2016 Found a cast iron monument within a cast iron manhole assembly. Checked ties using Certificate of Location dated June 6, 2011. All ties present and in good condition EXCEPT, unable to locate nail and Ramsey County disk in 18 in. Ash tree, up 1 ft. at N32°07'21"W, 73.09 ft. Ramsey County Surveyor's Office
- June 30, 2017 Found a cast iron monument within a cast iron manhole assembly. Checked ties using Certificate of Location dated June 6, 2011. All ties present and in good condition EXCEPT, unable to locate nail and Ramsey County disk in 18 in. Ash tree, up 1 ft. at N32°07'21"W, 73.09 ft. (previously noted). and also unable to locate nail and Ramsey County disk in power pole, up 1 ft., N20°46'26"E, 95.14 ft., pole was replaced. Monument will need to be retied as there are only 2 ties remaining in the field. Ramsey County Surveyor's Office
- July 12, 2017 Retied monument. Ramsey County Surveyor's Office