

MONUMENT 435

CERTIFICATE OF LOCATION OF GOVERNMENT CORNER

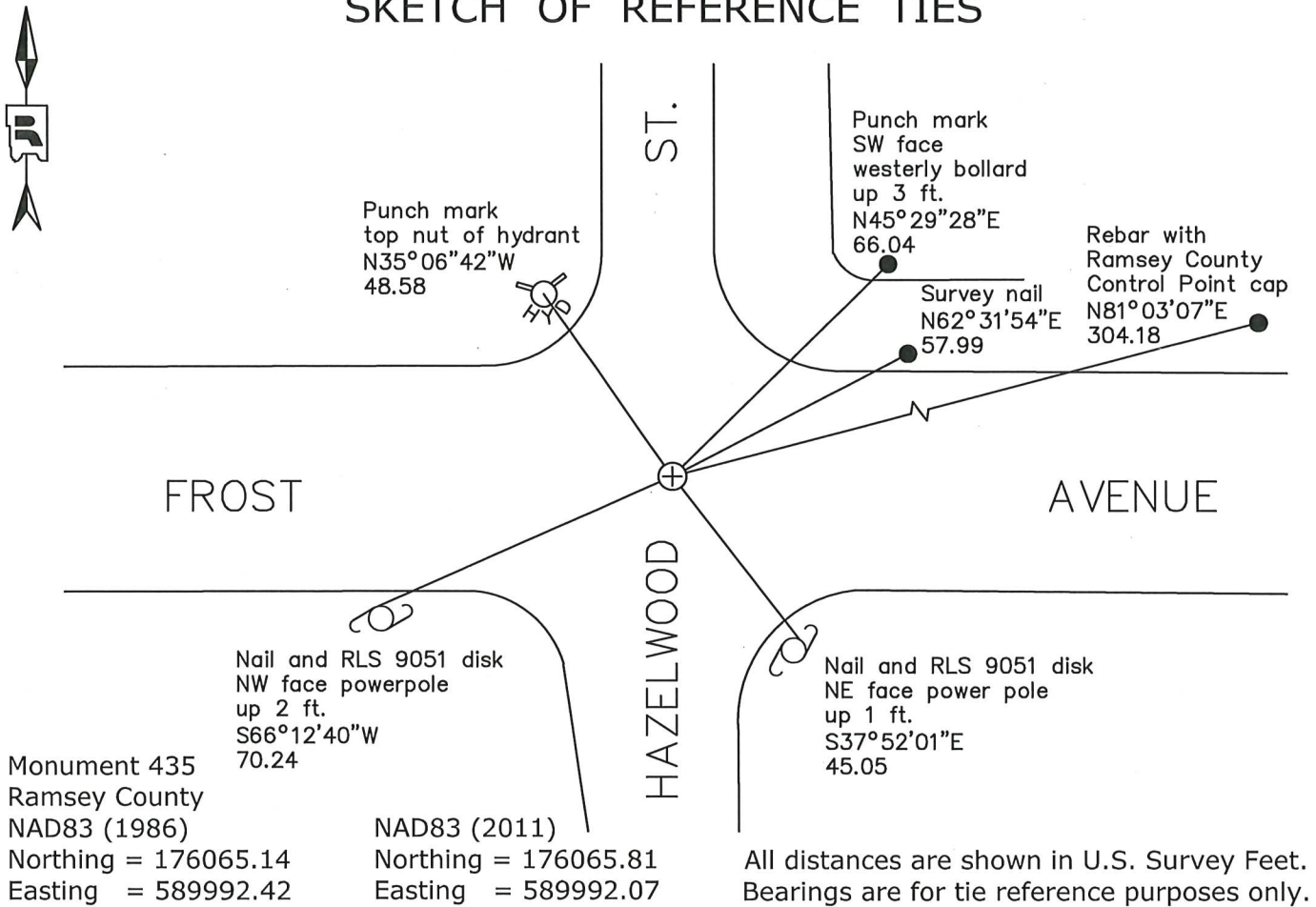
Center of Section 15, Township 29 North, Range 22 West, County of Ramsey, State of Minnesota.

At the corner location shown on the sketch

On May 7, 2019 found a cast iron monument, flush in bituminous road.

On June 9, 2020 placed a 5/8 inch by 14 inch rebar with "Ramsey County Surveyor"
3 inch aluminum cap, flush in bituminous road.

SKETCH OF REFERENCE TIES



Statements of evidence relative to this corner are on the following page.

I hereby certify that this survey, plan, or report was prepared by me or under my direct supervision, that I am a duly Licensed Land Surveyor under the laws of the state of Minnesota, and that this certificate is correct and complete to the best of my knowledge and belief.

Devin R. Ball 4/6/22
 Devin R. Ball Date
 Land Surveyor
 Minnesota License No. 56023

OFFICE OF COUNTY SURVEYOR
 County of Ramsey

I hereby certify that this document was filed in the County Surveyor's office this 7th day of April, 20 22.

Daniel D. Baar
 Daniel D. Baar
 Ramsey County Surveyor
 Minnesota License No. 45816

MONUMENT 435

Center of Section 15, Township 29, Range 22

1887	Plat of GLADSTONE PLAT 2 shows an iron monument symbol at the Center of Section.
August 2 and 3, 1887	Sketch of Section 15 on page 5 of Gates A. Johnson field book shows a square monument symbol at the Center of Section.
1896	The Center of Section 15 was fixed by Intersection. Set monument. Ramsey County Resurvey
July 1939	Checked monument. Ramsey County Engineering
March 6, 1947	Plat of F.D. NELSON'S HOMESITES shows a square monument symbol at the Center of Section.
September 6, 1974	Found railroad spike flush. Dug 2 ft., found nothing. Placed a cast iron monument and tied. Ramsey County Surveyor's Office
September 16, 1974	Found all 3 reference monuments; Southeasterly and Southwesterly monuments broken off. Ramsey County Surveyor's Office
November 21, 1983	Construction destroyed monument and reference monuments; placed P.K. nail and tied. Ramsey County Surveyor's Office
1984	Set a 20 inch cast iron monument. Ramsey County Surveyor's Office
October 19, 2000	Tied monument. Ramsey County Surveyor's Office
August 2, 2006	Retied monument. Ramsey County Surveyor's Office
May 14, 2008	Tied out monument for removal during road construction. Ramsey County Surveyor's Office
June 9, 2011	Monument still in place following road construction. Retied cast iron monument, down +/-0.05 ft. Ramsey County Surveyor's Office
August 3, 2016	Found a cast iron monument, down 0.05 ft. and checked ties. Ramsey County Surveyor's Office
June 23, 2017	Found a cast iron monument, down 0.05 ft. and checked ties. Ramsey County Surveyor's Office
May 7, 2019	Found a cast iron monument in bituminous road. Checked local ties and established offsets prior to removal during road construction. Ramsey County Surveyor's Office
November 20, 2019	Set a temporary 3 inch survey marker with "L.S. 45816" disk following road construction using offsets. Recorded local ties. Ramsey County Surveyor's Office

MONUMENT 435

Center of Section 15, Township 29, Range 22

June 9, 2020

Three inch survey marker not found. Set a $\frac{5}{8}$ inch by 14 inch rebar with "Ramsey County Surveyor" 3 inch aluminum cap using offsets. Recorded local ties.

Ramsey County Surveyor's Office

September 24, 2021

Three inch aluminum monument in place; all ties found and in good condition. Ramsey County Surveyor's Office