

MONUMENT 371N

CERTIFICATE OF LOCATION OF GOVERNMENT CORNER

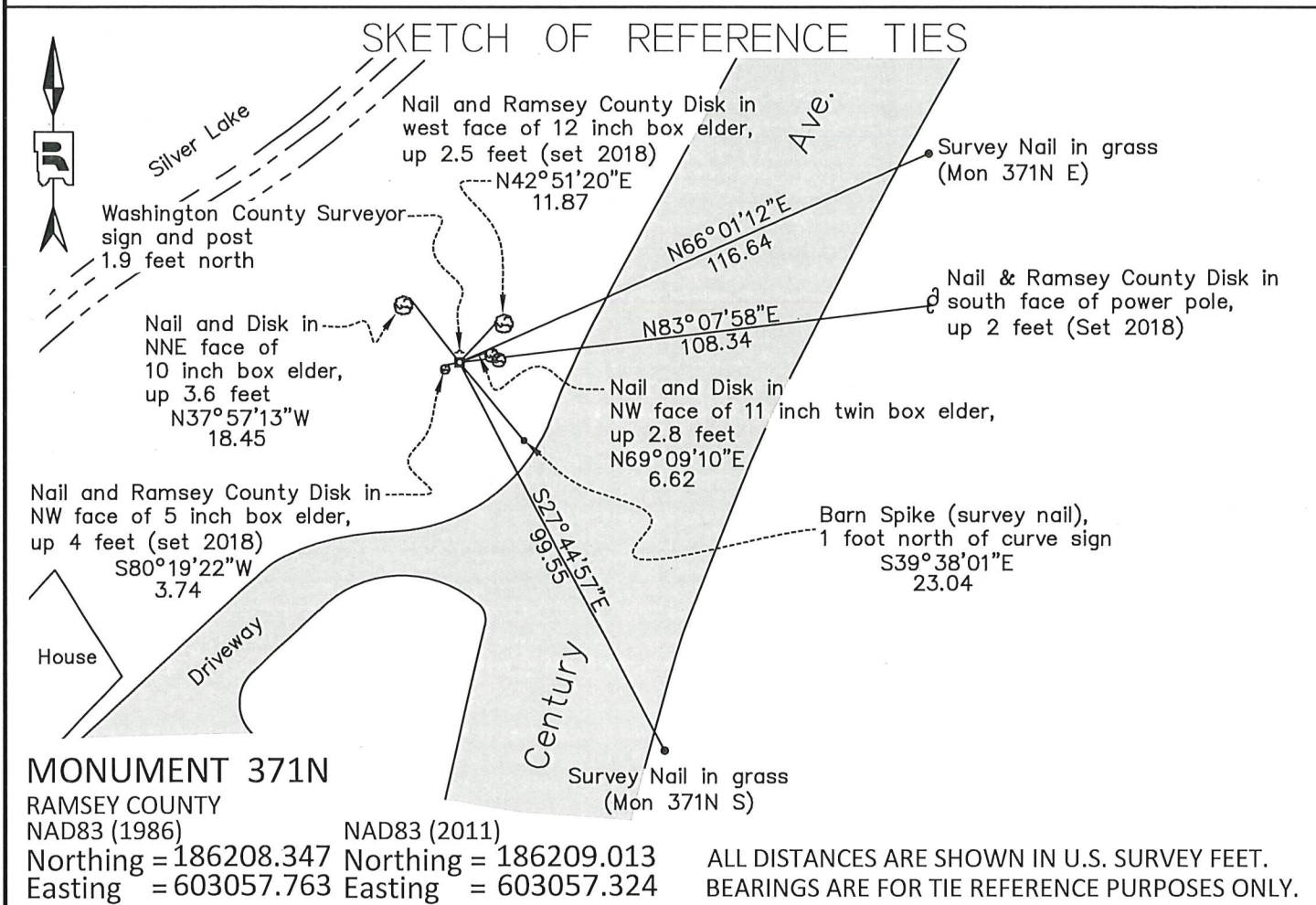
Meander Corner No. 6, Section 1, Township 29 North, Range 22 West, County of Ramsey, State of Minnesota.

At the corner location shown on the sketch

On August 31, 2018 found a granite monument with drill hole, down 0.8 feet.

left monument as found raised/lowered monument removed monument (explain)

On _____ placed a _____



Statements of evidence relative to this corner are on the following page.

I hereby certify that this survey, plan, or report was prepared by me or under my direct supervision, that I am a duly Licensed Land Surveyor under the laws of the state of Minnesota, and that this certificate is correct and complete to the best of my knowledge and belief.

Daniel D. Baar 5/17/22
 Daniel D. Baar Date
 Ramsey County Surveyor
 Minnesota License No. 45816

OFFICE OF COUNTY SURVEYOR
 County of Ramsey

I hereby certify that this document was filed in the County Surveyor's office this 17th day of May, 2022.

Daniel D. Baar
 Daniel D. Baar, L.S.
 Ramsey County Surveyor

MONUMENT 371N

Meander Corner No. 6, Section 1, Township 29, Range 22

- Oct. 9, 1847 Township 29 North between Ranges 21 & 22 West, 4th Meridian. North between Sections 1 & 6, Var 10°20'. 31.40 chains to Lake. Set meander post: Birch 6 N.40°E. 12, W. Oak 10 S.50°W. 15. James M. Marsh, Deputy Surveyor
- Sept. 22, 1897 Fixed Meander Corner and set monument. Ramsey County Remonumentation Survey
- June 1, 1923 Survey No.394 by L.W. Clarke shows a granite monument on the section line 2061.2 feet north of SW corner of section 6. Washington County Surveyor's Office
- January 25, 1973 Washington County Survey crew found a 6 inch x 6 inch granite monument, down 0.4 feet, and recorded ties. Washington County Surveyor's Office
- 1974 Washington County Survey crew verified the stone monument through section subdivision. Washington County Surveyor's Office
- June 7, 2009 Found a granite monument with drill hole, down 0.8 feet, and recorded ties. Ramsey County Surveyor's Office
- June 6, 2014 Found a granite monument, down 0.8 feet. Checked local ties using Certificate of Location dated July 7, 2009. Ramsey County Surveyor's Office
- July 26, 2018 Found a granite monument with drill hole, down 0.8 feet. Checked local ties using Certificate of Location dated July 7, 2009. Ramsey County Surveyor's Office
- August 31, 2018 Found a granite monument with drill hole, down 0.8 feet, and recorded ties. Ramsey County Surveyor's Office.
- On original PLSS plat, the Meander Corner is labeled '6'. On the Ramsey County Remonumentation Survey, the Meander Corner is labeled 'No. 5'.