

MONUMENT 34

CERTIFICATE OF LOCATION OF GOVERNMENT CORNER

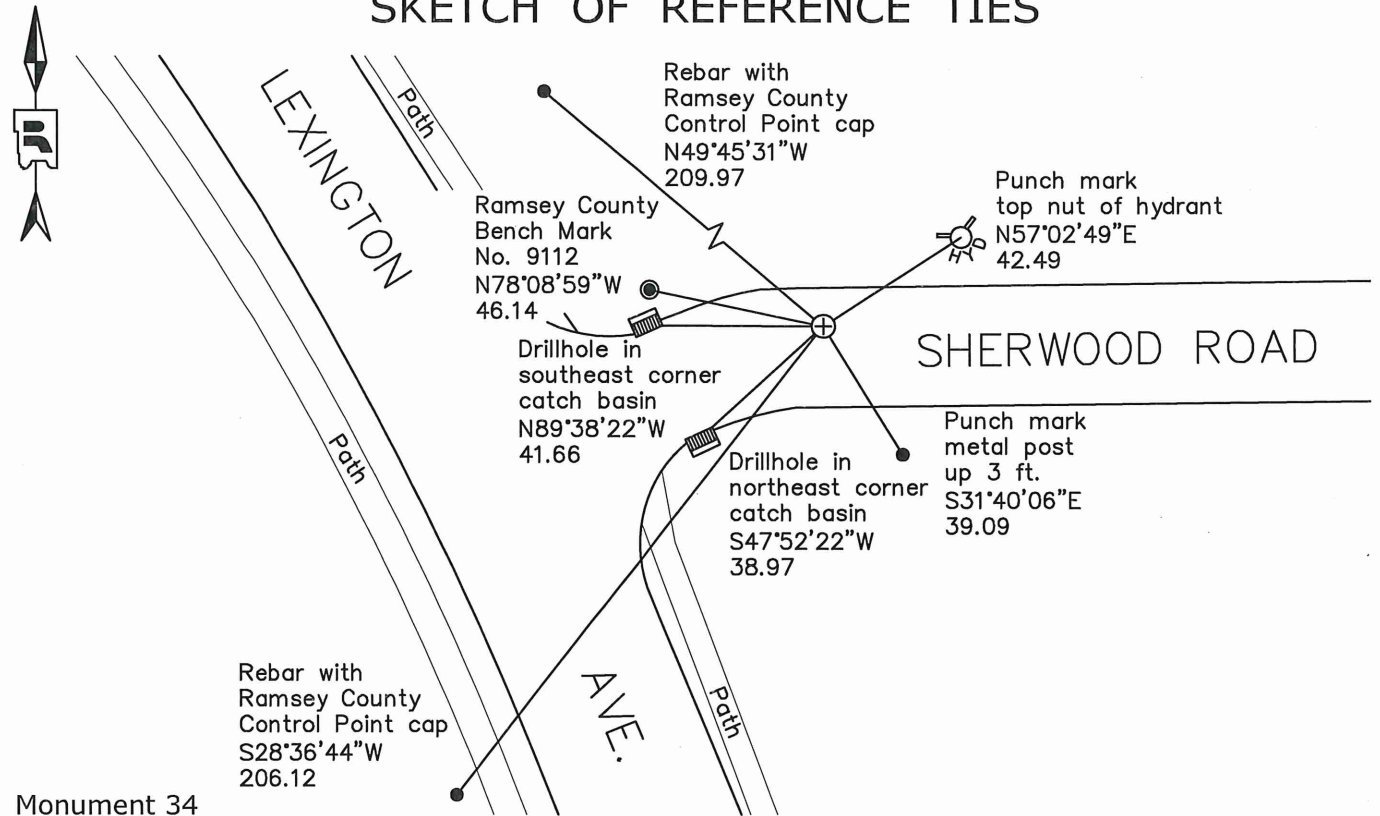
East ¼ Corner of Section 3, Township 30 North, Range 23 West, County of Ramsey,
State of Minnesota.

At the corner location shown on the sketch

On July 30, 2020 found a broken cast iron monument, down 13 inches in bituminous road.

On July 30, 2020 placed a 5/8 inch by 7 inch rebar with 3 inch aluminum cap stamped "Ramsey County Surveyor" over broken CIM.

SKETCH OF REFERENCE TIES



Monument 34
Ramsey County

NAD83 (1986)

Northing = 218294.78

Easting = 560812.49

NAD83 (2011)

Northing = 218295.66

Easting = 560812.06

All distances are shown in U.S. Survey Feet.
Bearings are for tie reference purposes only.

Statements of evidence relative to this corner are on the following page.

I hereby certify that this survey, plan, or report was prepared by me or under my direct supervision, that I am a duly Licensed Land Surveyor under the laws of the state of Minnesota, and that this certificate is correct and complete to the best of my knowledge and belief.

Devin R. Ball 1/24/22

Devin R. Ball
Deputy County Surveyor
Minnesota License No. 56023

OFFICE OF COUNTY SURVEYOR
County of Ramsey

I hereby certify that this document was filed in the County Surveyor's office this 25th day of January, 2022.

Daniel D. Baar

Daniel D. Baar
Ramsey County Surveyor
Minnesota License No. 45816

MONUMENT 34

East $\frac{1}{4}$ Corner of Section 3, Township 30, Range 23

December 10, 1847	Set 1/4 Section post, B. Oak 12 N62°E 75, "Do" (B. Oak) 8 S60°W 31.
December, 1895	In establishing the 1/4 Corner between Sections 2 and 3, found old stake at 1/4 corner, Government witness trees gone. Retied Corner and set Iron Monument. Ramsey County Resurvey
July 11, 1898	Set monument. Ramsey County Resurvey
July 17, 1975	Found iron monument in concrete. Granite down 0.58 ft. Set short (4 $\frac{3}{8}$ in.) cast iron. Ramsey County Surveyor's Office
July 29, 1975	Tied monument. Ramsey County Surveyor's Office
1990	Monument removed for Construction Department. Ramsey County Surveyor's Office
October 14, 1992	Set 20 in. cast iron monument flush. Ramsey County Surveyor's Office
September 2, 1993	Tied monument. Ramsey County Surveyor's Office
June 14, 1999	Cemented monument and re-drilled hole. Ramsey County Surveyor's Office
August 10, 2006	Cemented monument. Ramsey County Surveyor's Office
August 16, 2006	Retied monument. Ramsey County Surveyor's Office
November 4, 2011	Retied monument, flush. Ramsey County Surveyor's Office
June 21, 2016	Found a cast iron monument, flush, and checked local ties. Ramsey County Surveyor's Office
May 1, 2019	Found a cast iron monument, flush in bituminous road. Established offsets and checked local ties prior to removal during road construction. Ramsey County Surveyor's Office
July 30, 2020	Found a broken cast iron monument, down 13 inches. Placed a $\frac{5}{8}$ inch by 7 inch rebar with 3 inch aluminum cap stamped "Ramsey County Surveyor" over the broken CIM following road construction using offsets. Recorded local ties. Ramsey County Surveyor's Office