

MONUMENT 339

CERTIFICATE OF LOCATION OF SECTION SUBDIVISION MONUMENT

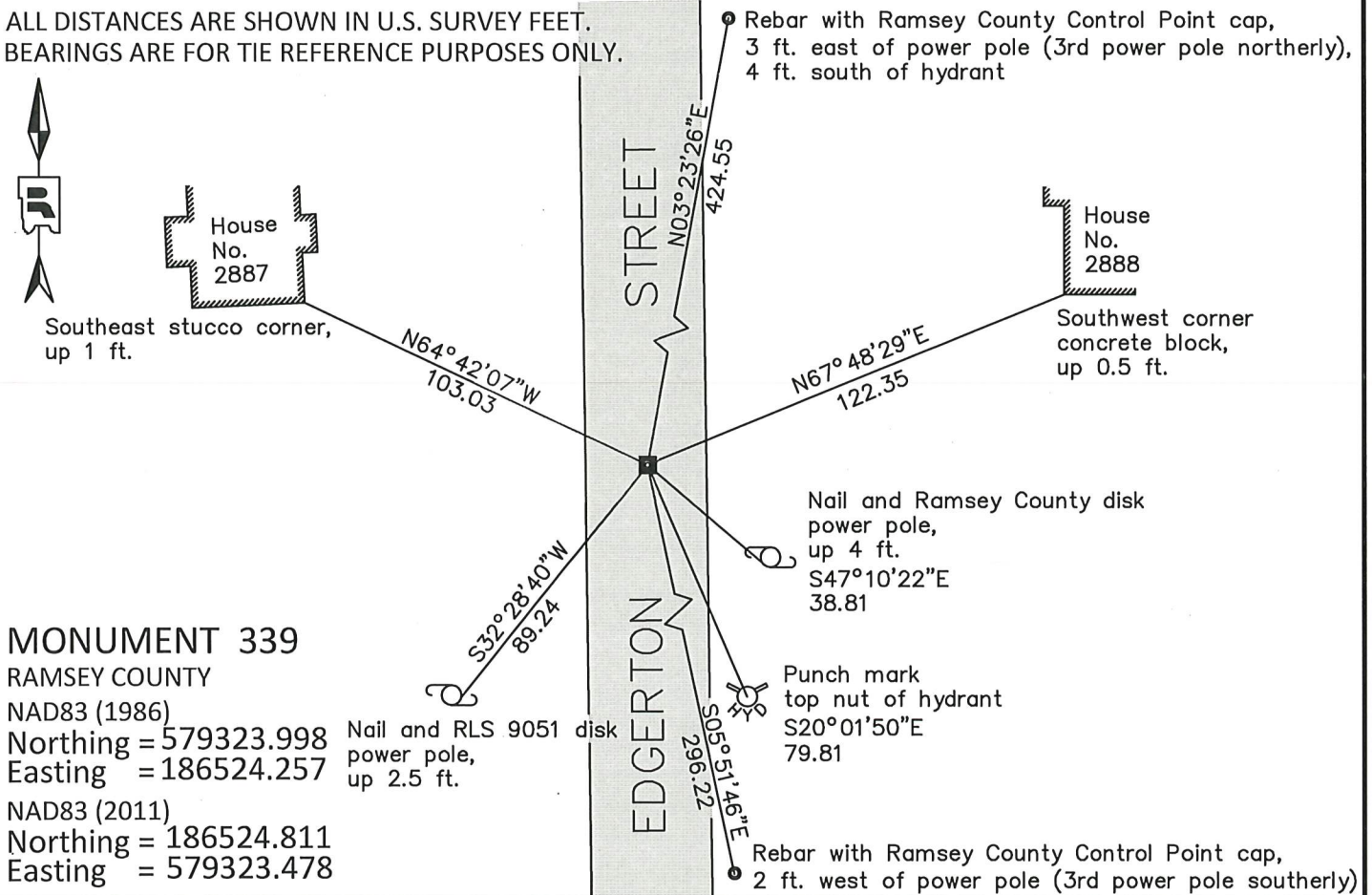
Center of Section 5, Township 29 North, Range 22 West, County of Ramsey,
State of Minnesota.

At the corner location shown on the sketch

On July 26, 2019 found a granite monument with drill hole, down 0.7 feet.

SKETCH OF REFERENCE TIES

ALL DISTANCES ARE SHOWN IN U.S. SURVEY FEET.
BEARINGS ARE FOR TIE REFERENCE PURPOSES ONLY.



Statements of evidence relative to this corner are on the following page.

I hereby certify that this survey, plan, or report was prepared by me or under my direct supervision, that I am a duly Licensed Land Surveyor under the laws of the state of Minnesota, and that this certificate is correct and complete to the best of my knowledge and belief.

Devin R. Ball 4/6/22
 Devin R. Ball Date
 Land Surveyor
 Minnesota License No. 56023

OFFICE OF COUNTY SURVEYOR
 County of Ramsey

I hereby certify that this document was filed in the County Surveyor's office this 7th day of April, 20 22.

Daniel D. Baar
 Daniel D. Baar, L.S.
 Ramsey County Surveyor

MONUMENT 339

Center of Section 5, Township 29, Range 22

October, 1900	Fixed the center of section 5 by intersection and set monument. Ramsey County Resurvey
September 18, 1974	Found a granite monument down 6 inches. Retied. Ramsey County Surveyor's Office
November 20, 1974	Set cast iron monument. Ramsey County Surveyor's Office
September 12, 1977	Checked monument. Ramsey County Surveyor's Office
August 31, 1990	Found cast iron monument down +/- 0.15. Retied. Ramsey County Surveyor's Office
December 9, 1999	Retied monument. Ramsey County Surveyor's Office
June 27, 2006	Retied monument. Ramsey County Surveyor's Office
July 4, 2011	Retied monument, down 0.2 feet in bituminous road. Ramsey County Surveyor's Office
June 6, 2016	Found a cast iron monument down 0.2 feet in bituminous road. Checked local ties using Certificate of Location dated July 31, 2012 and established offsets prior to road construction. Ramsey County Surveyor's Office
August 23, 2018	Found a cast iron monument down 0.2 feet in bituminous road. Checked local ties using Certificate of Location dated July 31, 2012. Ramsey County Surveyor's Office
April 26, 2019	Found a cast iron monument down 0.2 feet in bituminous road. Checked local ties using Certificate of Location dated July 31, 2012 and established offsets prior to road construction. Ramsey County Surveyor's Office
July 26, 2019	Following road construction, removed short cast iron monument and found granite monument with drill hole, down 0.7 feet. Tied out granite monument using offsets and local ties. Ramsey County Surveyor's Office
October 2019	Cast iron manhole assembly placed by others over granite monument.