

MONUMENT 292

CERTIFICATE OF LOCATION OF GOVERNMENT CORNER

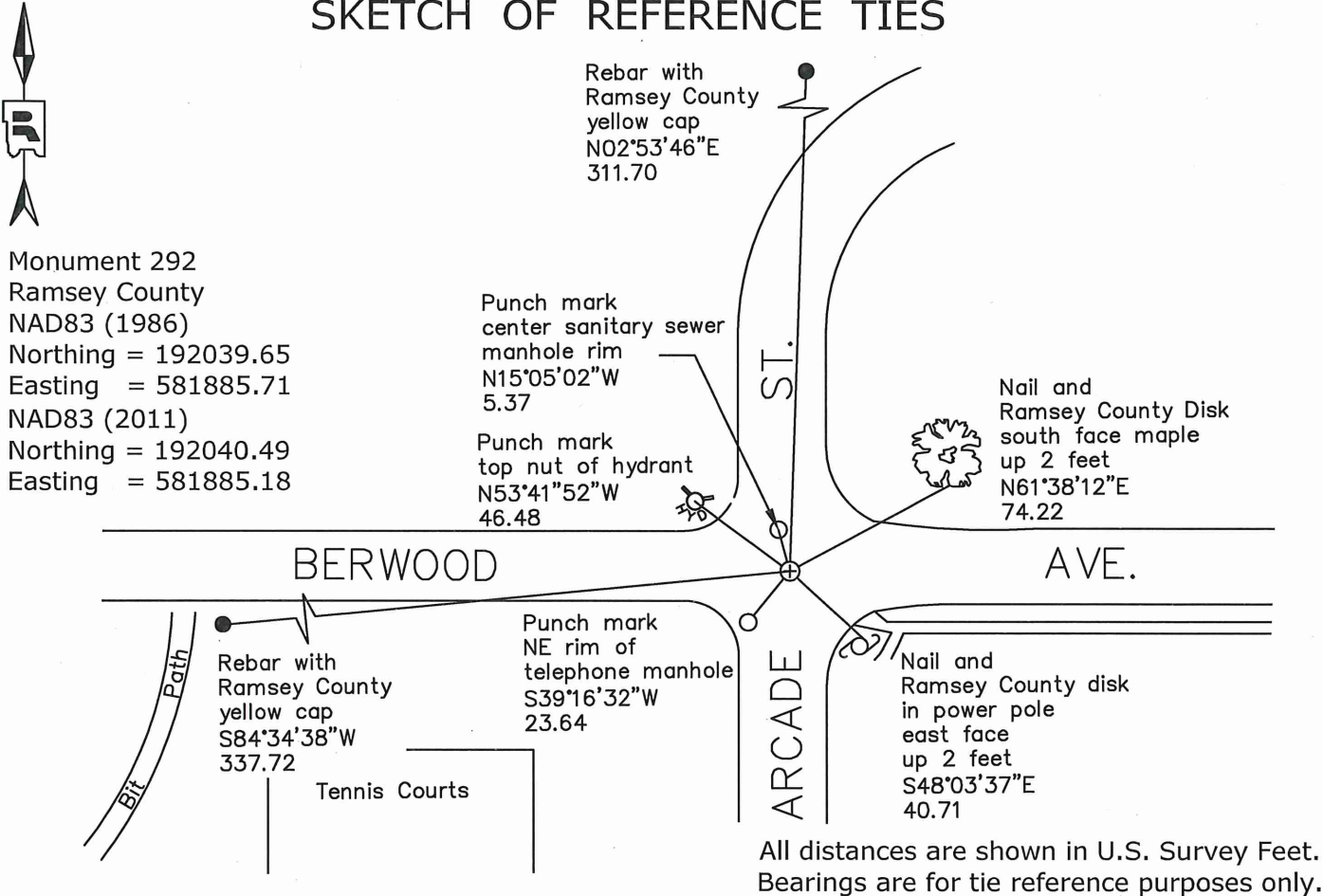
East 1/4 Corner of Section 32, Township 30 North, Range 22 West, County of Ramsey,
State of Minnesota.

At the corner location shown on the sketch

On May 6, 2020 found a cast iron monument, flush.

On April 5, 2021 placed a 5/8 inch by 14 inch rebar with 3 inch aluminum cap
stamped " Ramsey County Surveyor".

SKETCH OF REFERENCE TIES



Statements of evidence relative to this corner are on the following page.

I hereby certify that this survey, plan, or report was prepared by me or under my direct supervision, that I am a duly Licensed Land Surveyor under the laws of the state of Minnesota, and that this certificate is correct and complete to the best of my knowledge and belief.

Devin R. Ball 1/24/22
Devin R. Ball Date
Deputy County Surveyor
Minnesota License No. 56023

OFFICE OF COUNTY SURVEYOR
County of Ramsey

I hereby certify that this document was filed in the County Surveyor's office this 25th day of January, 20 22.

Daniel D. Baar
Daniel D. Baar
Ramsey County Surveyor
Minnesota License No. 45816

MONUMENT 292

East 1/4 Corner of Section 32, Township 30, Range 22

December 3, 1847	North between section 32 & 33. At 40.00 chains, set 1/4 Section Post. Bur Oak 12 N59°E 129 "Do" 8 S35°E 187 Isaac N. Higbee, Deputy Surveyor
November 5, 1900	In establishing the 1/4 Corner between Sections 32 and 33, found one Government tree standing and one old stump hole of Government tree. Ramsey County Resurvey
November 21, 1900	Set monument. Ramsey County Resurvey
May 1945	Checked monument. Ramsey County Engineer's Office
November 1953	Reset monument. Ramsey County Engineer's Office
February 1967	Checked monument. Ramsey County Engineer's Office
April 1974	Granite monument missing. Ramsey County Surveyor's Office
May 9, 1974	Placed a cast iron monument, by using M.W. Carley, and Frank Kvidera (Co. Hwy. Dept.) ties. Ramsey County Surveyor's Office
February 12, 1991	Retied monument. Ramsey County Surveyor's Office
May 6, 1996	Monument broken off by City construction of Arcade Street to the north. Dug down and found bottom half of monument. Tied and set P.K. nails. Ramsey County Surveyor's Office
August 5, 1997	Set a 20 inch cast iron monument. Ramsey County Surveyor's Office
August 29, 2006	Retied monument. Ramsey County Surveyor's Office
September 26, 2006	Concrete maintenance. Ramsey County Surveyor's Office
August 15, 2011	Retied monument. Ramsey County Surveyor's Office
August 8, 2016	Found a cast iron monument, flush, and inspected local ties. Ramsey County Surveyor's Office
August 21, 2018	Found a cast iron monument, flush, and inspected local ties. Ramsey County Surveyor's Office
May 6, 2020	Found a cast iron monument, flush. Established offsets and checked local ties prior to removal during road construction. Ramsey County Surveyor's Office

MONUMENT 292

East 1/4 Corner of Section 32, Township 30, Range 22

April 5, 2021

Placed a 5/8 inch by 14 inch rebar with 3 inch aluminum cap stamped
"Ramsey County Surveyor" following road construction using offsets.
Recorded local ties.
Ramsey County Surveyor's Office