

# MONUMENT 238

## CERTIFICATE OF LOCATION OF GOVERNMENT CORNER

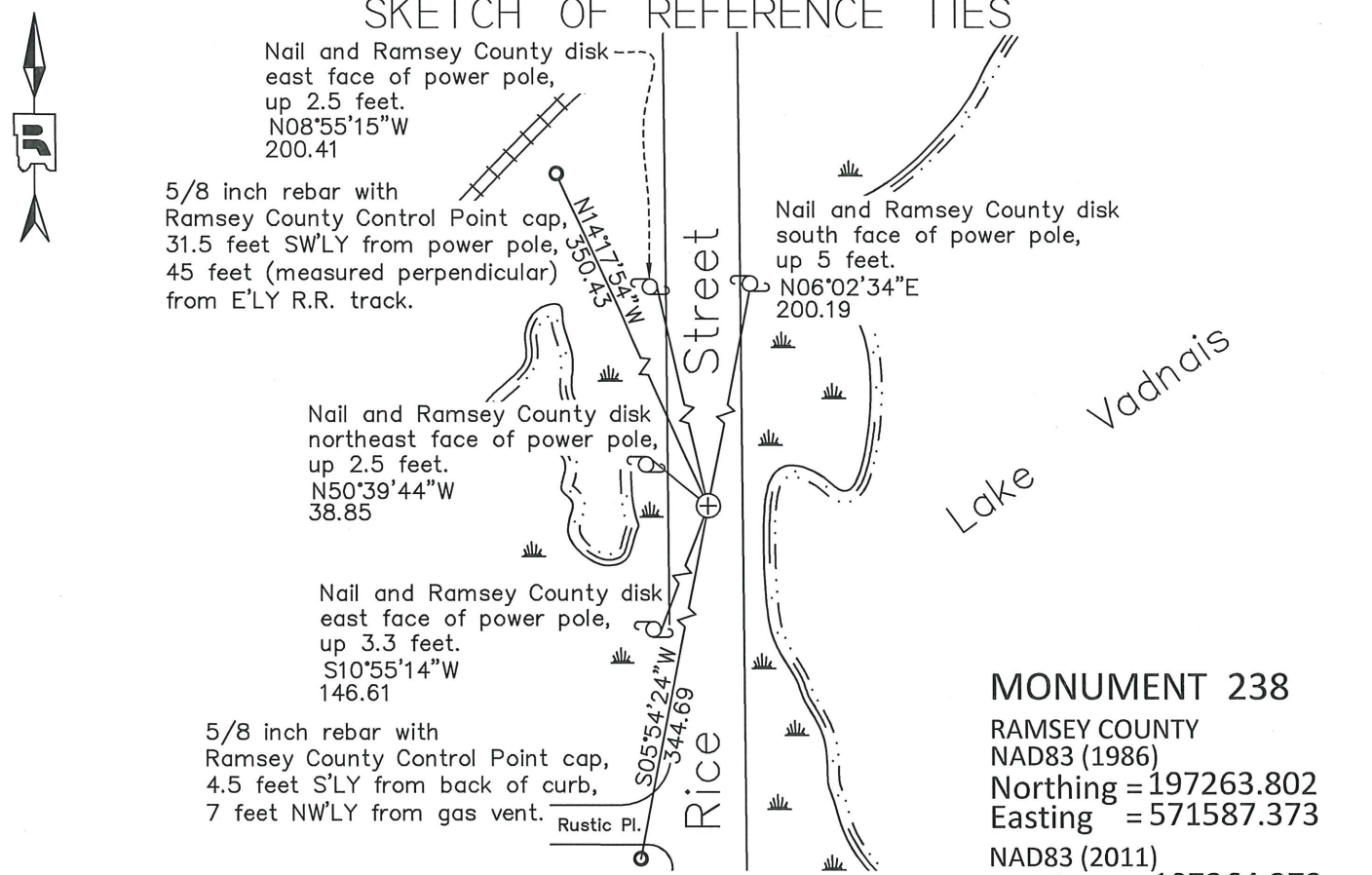
East Quarter Corner of Section 25, Township 30 North, Range 23 West, County of Ramsey, State of Minnesota.

At the corner location shown on the sketch

On August 19, 2019 found a cast iron monument, flush in bituminous road.

On August 22, 2019 placed a 5/8 inch x 14 inch rebar with 3 inch Aluminum Cap stamped "Ramsey County Surveyor", flush in new bituminous road.

### SKETCH OF REFERENCE TIES



**MONUMENT 238**  
 RAMSEY COUNTY  
 NAD83 (1986)  
 Northing = 197263.802  
 Easting = 571587.373  
 NAD83 (2011)  
 Northing = 197264.372  
 Easting = 571587.013

ALL DISTANCES ARE SHOWN IN U.S. SURVEY FEET.  
 BEARINGS ARE FOR TIE REFERENCE PURPOSES ONLY.

Statements of evidence relative to this corner are on the following page.

I hereby certify that this survey, plan, or report was prepared by me or under my direct supervision, that I am a duly Licensed Land Surveyor under the laws of the state of Minnesota, and that this certificate is correct and complete to the best of my knowledge and belief.

Devin R. Ball 1/18/22  
 Devin R. Ball Date  
 Deputy County Surveyor  
 Minnesota License No. 56023

OFFICE OF COUNTY SURVEYOR  
 County of Ramsey

I hereby certify that this document was filed in the County Surveyor's office this 18<sup>th</sup> day of January, 20 22.

Daniel D. Baar  
 Daniel D. Baar, L.S.  
 Ramsey County Surveyor

# MONUMENT 238

East Quarter Corner of Section 25, Township 30, Range 23

|                   |   |
|-------------------|---|
| October 18, 1847  | Set post at Quarter Section corner, B. Oak 18 N2 1/2°W 781.<br>James M. Marsh Deputy Surveyor   |
| June 1896         | In establishing the Quarter corner between S25 T30 R23 and S30 T30 R22, this corner was fixed from subdivision stakes found along the east side of Rice Street. Government witness trees gone. Fixed corner, tied it, and set monument.<br>Ramsey County Resurvey |
| January 21, 1933  | Re-established nail placed in pavement.<br>Ramsey County Engineering Department   |
| February 26, 1940 | Placed a drill hole opposite nail in centerline of pavement; checked with old ties (Found in Green Book notes for S30 T30 R22).<br>Ramsey County Engineering Department   |
| October 21, 1940  | Replaced drill hole with iron monument (Found in Green Book notes for S30 T30 R22).<br>Ramsey County Engineering Department   |
| December 1943     | Checked monument.<br>Ramsey County Engineering Department   |
| July 1, 1975      | Found a P.K. nail in bituminous road surface. Found 1/2 inch inside diameter iron (1.38 feet long) down 1.19 feet. Found old road surface down 2.9 feet with 1 1/2 inch diameter iron in old pavement.<br>Ramsey County Surveyor's Office                         |
| July 7, 1975      | Placed a 20 inch cast iron monument.<br>Ramsey County Surveyor's Office   |
| December 20, 1991 | Retied monument.<br>Ramsey County Surveyor's Office   |
| October 13, 1993  | Monument down 5 inches. Set a 4 5/8 inch cast iron monument over top and cemented in place.<br>Ramsey County Surveyor's Office  |
| December 4, 2002  | Retied monument.<br>Ramsey County Surveyor's Office   |
| August 24, 2007   | Retied monument.<br>Ramsey County Surveyor's Office   |
| September 6, 2012 | Found a cast iron monument (with worn top), flush in bituminous road and retied.<br>Ramsey County Surveyor's Office   |
| July 23, 2019     | Found a cast iron monument (with worn top), flush in bituminous road. Checked condition of ties.<br>Ramsey County Surveyor's Office   |
| August 19, 2019   | Found a cast iron monument (with worn top), flush in bituminous road. Checked local ties and established offsets prior to removal of both the 4 5/8 inch and 20 inch cast iron monuments during road construction.<br>Ramsey County Surveyor's Office             |

# MONUMENT 238

East Quarter Corner of Section 25, Township 30, Range 23

August 22, 2019

Placed a 5/8 inch x 14 inch rebar with 3 inch aluminum cap stamped  
"Ramsey County Surveyor", flush in new bituminous road using offsets.  
Recorded local ties.  
Ramsey County Surveyor's Office

