

# MONUMENT 122N

## CERTIFICATE OF LOCATION OF GOVERNMENT CORNER

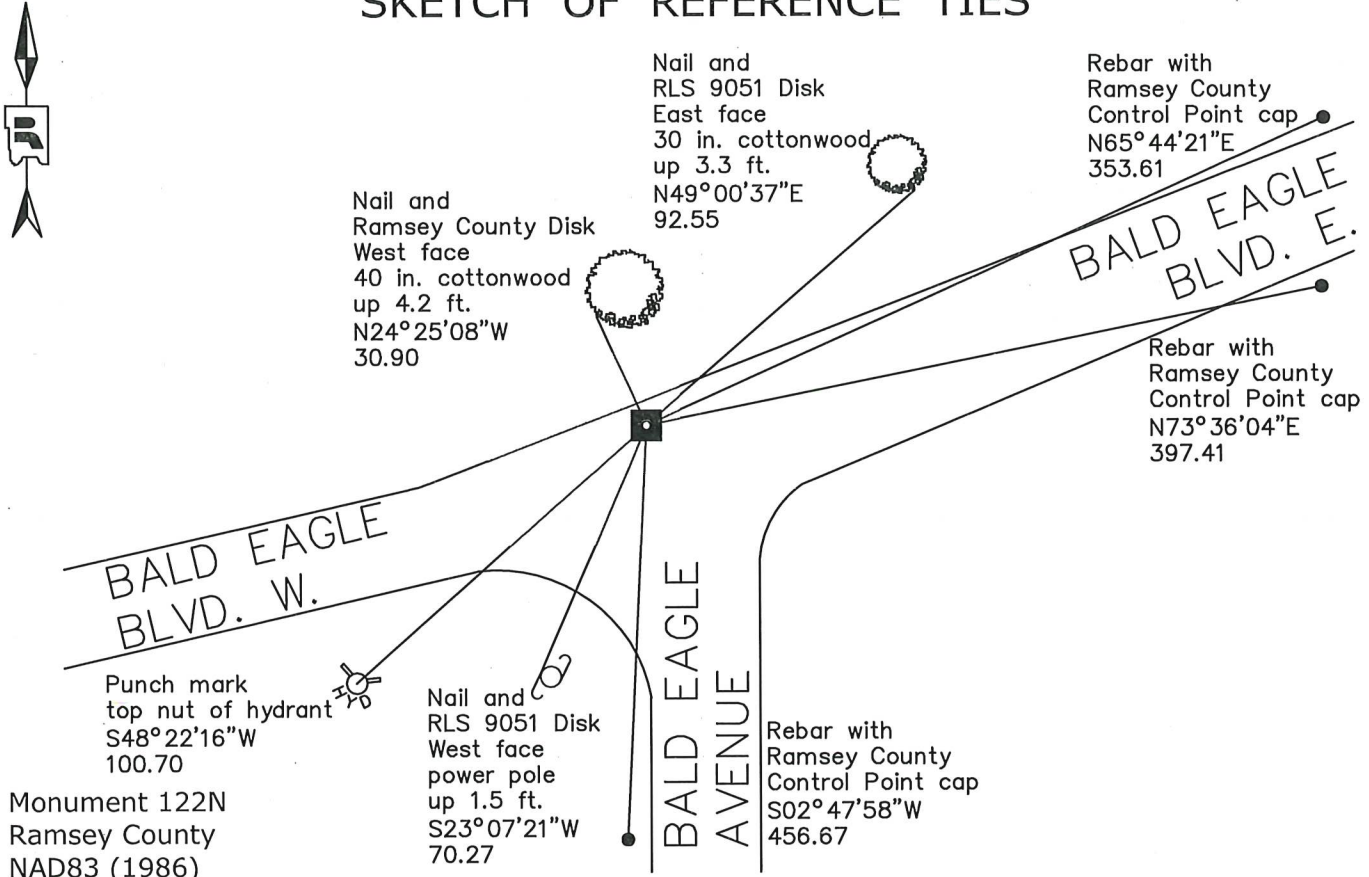
South Witness Monument to Center of Section 11, Township 30 North, Range 22 West,  
County of Ramsey, State of Minnesota.

At the corner location shown on the sketch

On Aug 27, 2020 found an 8 inch by 8 inch granite monument, down 1.5 feet,  
within a cast iron manhole assembly.

On \_\_\_\_\_ placed a \_\_\_\_\_

### SKETCH OF REFERENCE TIES



Monument 122N  
Ramsey County  
NAD83 (1986)  
Northing = 212623.58  
Easting = 595022.84

All distances are shown in U.S. Survey Feet.  
Bearings are for tie reference purposes only.

Statements of evidence relative to this corner are on the following page.

I hereby certify that this survey, plan, or report was prepared by me or under my direct supervision, that I am a duly Licensed Land Surveyor under the laws of the state of Minnesota, and that this certificate is correct and complete to the best of my knowledge and belief.

Devin R. Ball                      4/6/22  
Devin R. Ball                      Date  
Deputy County Surveyor  
Minnesota License No. 56023

OFFICE OF COUNTY SURVEYOR  
County of Ramsey

I hereby certify that this document was filed in the County Surveyor's office this 7<sup>th</sup> day of April, 20 22.

Daniel D. Baar  
Daniel D. Baar  
Ramsey County Surveyor  
Minnesota License No. 45816

# MONUMENT 122N

South Witness Corner to Center of Section 11, Township 30, Range 22

February 8, 1902	Fixed the Center of Section 11 by Intersection. Ramsey County Resurvey
December 8, 1902	Set Monument 568 ft. S. (122N), 1100 ft. E. (97E), 1878.35 ft. W. (96E). Ramsey County Resurvey
May 15, 1974	Found a granite monument, down +/-1 ft; placed a short cast iron monument on top and cemented in. Ramsey County Surveyor's Office
July 3, 1974	Tied monument, on North edge of road pavement. Ramsey County Surveyor's Office
July 23, 1996	Cast iron monument broke by road maintenance. Dug down to granite monument. Ramsey County Surveyor's Office
July 25, 1996	Set a short (10 in.) Harrison cast iron monument in cement over granite monument. Ramsey County Surveyor's Office
March 29, 2001	Tied monument. Ramsey County Surveyor's Office
June 15, 2006	Retied monument. Ramsey County Surveyor's Office
September 16, 2011	Retied a cast iron monument. Ramsey County Surveyor's Office
May 5, 2020	Found a cast iron monument in bituminous road. Established offsets and checked local ties prior to removal during road construction. Ramsey County Surveyor's Office
August 12, 2020	Found an 8 inch by 8 inch granite monument, down 1.5 feet after removal of cast iron monument. Established offsets and recorded local ties prior to road construction. Ramsey County Surveyor's Office
August 27, 2020	Found an 8 inch by 8 inch granite monument within a cast iron manhole assembly. Manhole assembly installed by contractor following road construction. Ramsey County Surveyor's Office