

MONUMENT 104

CERTIFICATE OF LOCATION OF GOVERNMENT CORNER

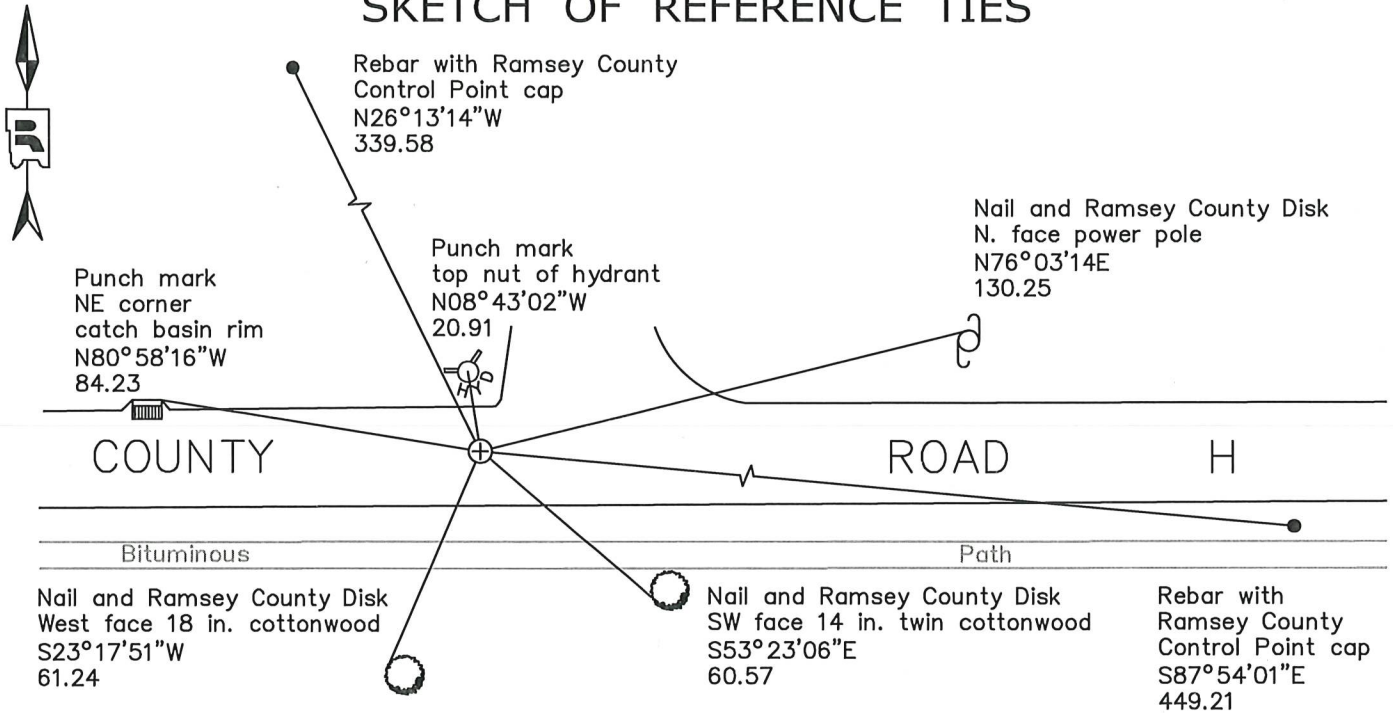
North 1/4 Corner of Section 17, Township 30 North, Range 23 West, County of Ramsey, State of Minnesota.

At the corner location shown on the sketch

On May 1, 2020 found a cast iron monument, down 0.15 feet.

On August 13, 2020 placed a 5/8 inch by 14 inch rebar with 3 inch aluminum cap stamped "Ramsey County Surveyor".

SKETCH OF REFERENCE TIES



Monument 104
 Ramsey County
 NAD83 (1986) NAD83 (2011)
 Northing = 210339.68 Northing = 210340.31 All distances are shown in U.S. Survey Feet.
 Easting = 547727.67 Easting = 547727.29 Bearings are for tie reference purposes only.

Statements of evidence relative to this corner are on the following page.

I hereby certify that this survey, plan, or report was prepared by me or under my direct supervision, that I am a duly Licensed Land Surveyor under the laws of the state of Minnesota, and that this certificate is correct and complete to the best of my knowledge and belief.

Devin R. Ball 4/6/22
 Devin R. Ball Date
 Land Surveyor
 Minnesota License No. 56023

OFFICE OF COUNTY SURVEYOR
 County of Ramsey
 I hereby certify that this document was filed in the County Surveyor's office this 7th day of April, 20 22.

Daniel D. Baar
 Daniel D. Baar
 Ramsey County Surveyor
 Minnesota License No. 45816

MONUMENT 104

North $\frac{1}{4}$ Corner of Section 17, Township 30, Range 23

December 16, 1847	Set 1/4 Section post (Bur Oak 16 N1W 1.50; Bur Oak 10 S81W 2.52). Isaac Higbee, Deputy Surveyor
May 17, 1901	In Establishing the 1/4 Corner between Sections 8 and 17, Found one Government witness tree stump and also found old stake at 1/4 Corner. Ramsey County Resurvey
January, 1903	Set monument. Ramsey County Resurvey
November, 1943	Checked monument. Ramsey County Engineer's Office
February, 1954	Checked monument. Ramsey County Engineer's Office
October, 1964	Checked monument. Ramsey County Engineer's Office
August 19, 1974	Found a cast iron monument flush; tied. Ramsey County Surveyor's Office
January 14, 1992	Retied monument. Ramsey County Surveyor's Office
October 13, 2000	Retied monument. Ramsey County Surveyor's Office
March 8, 2005	Retied monument. Ramsey County Surveyor's Office
June 3, 2010	Retied monument. Ramsey County Surveyor's Office
June 20, 2014	Checked monument and tie conditions. Established NAD83 (1996 Adjusted) coordinates on the cast iron monument. Work was performed as part of County Surveyor's Office survey project in support of the redevelopment of former TCAAP property. Coordinates established utilizing historic traverse data, complimenting current traverse data and GPS measurements, all analyzed and adjusted by least squares. Ramsey County Surveyor's Office
May 1, 2020	Found a cast iron monument, down 0.15 feet in bituminous road. Established offsets prior to removal during road construction. Ramsey County Surveyor's Office
May 7, 2020	Found a cast iron monument, down 0.15 feet in bituminous road and inspected local ties. Ramsey County Surveyor's Office
August 13, 2020	Placed a $\frac{5}{8}$ inch by 14 inch rebar with 3 inch aluminum cap stamped "Ramsey County Surveyor" following road construction using offsets. Recorded local ties. Ramsey County Surveyor's Office