

# MONUMENT 101

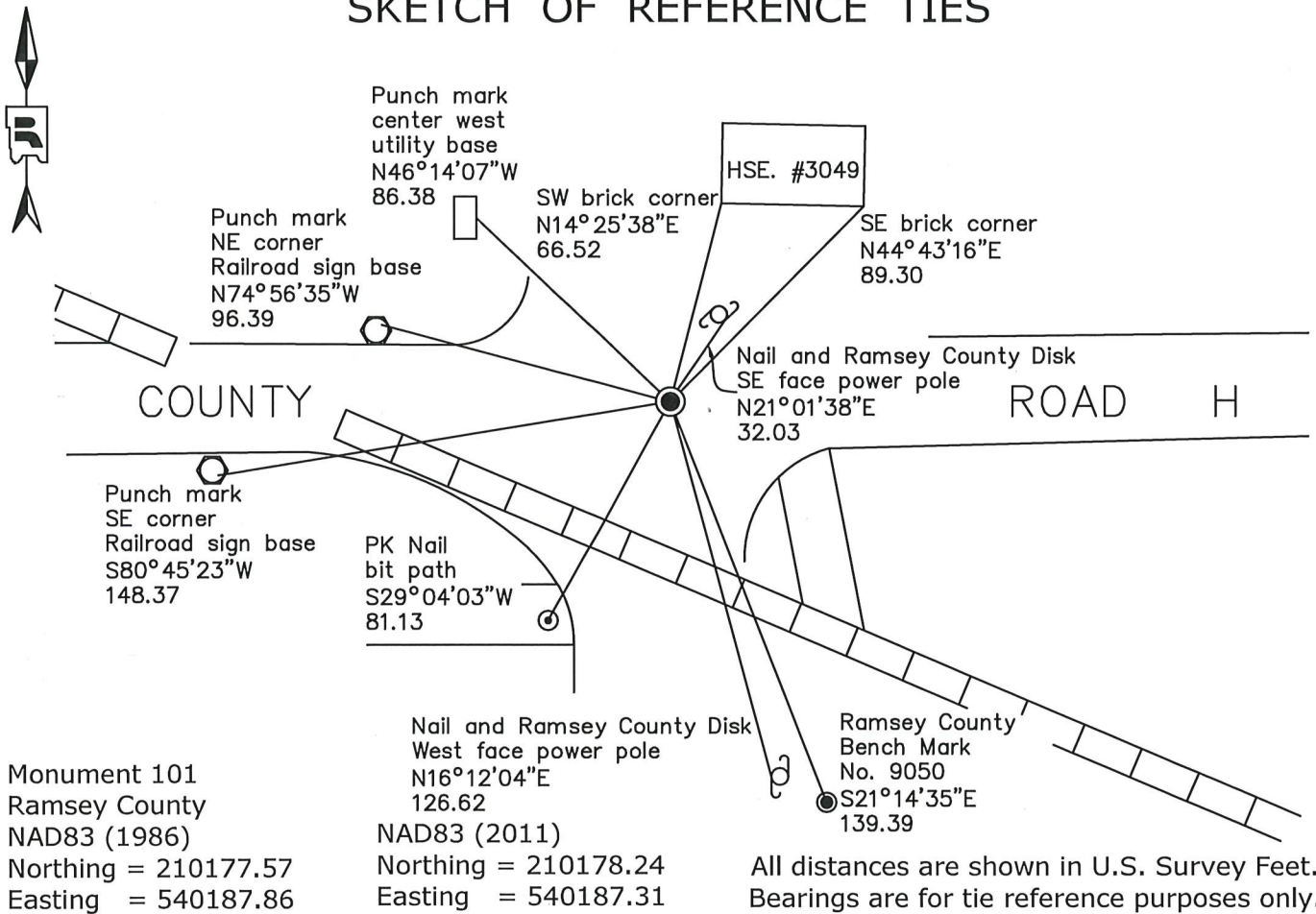
## CERTIFICATE OF LOCATION OF GOVERNMENT CORNER

Southwest Corner of Section 7, Township 30 North, Range 23 West, County of Ramsey,  
State of Minnesota.

At the corner location shown on the sketch

On December 10, 2020 found an "Anoka County Surveyor" cast iron monument, flush in  
bituminous.

### SKETCH OF REFERENCE TIES



Statements of evidence relative to this corner are on the following page.

I hereby certify that this survey, plan, or report was prepared by me or under my direct supervision, that I am a duly Licensed Land Surveyor under the laws of the state of Minnesota, and that this certificate is correct and complete to the best of my knowledge and belief.

*Devin R. Ball* 4/14/22  
 Devin R. Ball Date  
 Deputy County Surveyor  
 Minnesota License No. 56023

OFFICE OF COUNTY SURVEYOR  
 County of Ramsey

I hereby certify that this document was filed in the County Surveyor's office this 19<sup>th</sup> day of April, 20 22.

*Daniel D. Baar*  
 Daniel D. Baar  
 Ramsey County Surveyor  
 Minnesota License No. 45816

# MONUMENT 101

Southwest Corner of Section 7, Township 30, Range 23

October 18, 1847	North between Section 13 & 18. Set post on corner to Section 7, 12, 13 & 18. Bur Oak 10N 60E 110 links Bur Oak 12S 65E 43 links Bur Oak 10S 69W 44 links Bur Oak 20N 29W 69 links James M. Marsh, Deputy Surveyor
May 27, 1901	In Establishing the SW Corner of Section 7. Found two Government trees and one Government tree stump fixed Corner. Ramsey County Resurvey
June 15, 1901	Set Monument. Ramsey County Resurvey
October 1945	Checked Monument. Ramsey County Engineer
1953	Checked Monument. Ramsey County Engineer
June 22, 1960	Granite Monument found and set a cast iron monument at the exact location. Anoka County Surveyor's Office
August 19, 1974	Found a cast iron monument flush and retied. Ramsey County Surveyor's Office
January 14, 1992	Retied monument. Ramsey County Surveyor's Office
October 17, 2000	Retied monument. Ramsey County Surveyor's Office
December 29, 2004	Retied monument. Ramsey County Surveyor's Office
October 20, 2009	Retied monument. Ramsey County Surveyor's Office
November 5, 2014	Found a cast iron monument and raised to flush with the surface. The ties were updated. Anoka County Surveyor's Office
August 3, 2020	Cast iron monument not found. Most likely removed due to road construction. Inspected local ties. Ramsey County Surveyor's Office
October, 2020	Set an "Anoka County Surveyor" cast iron monument following road construction. Anoka County Surveyor's Office
December 10, 2020	Found an "Anoka County Surveyor" cast iron monument, flush in bituminous and recorded new local ties. Ramsey County Surveyor's Office