

# MONUMENT 723

## CERTIFICATE OF LOCATION OF GOVERNMENT CORNER

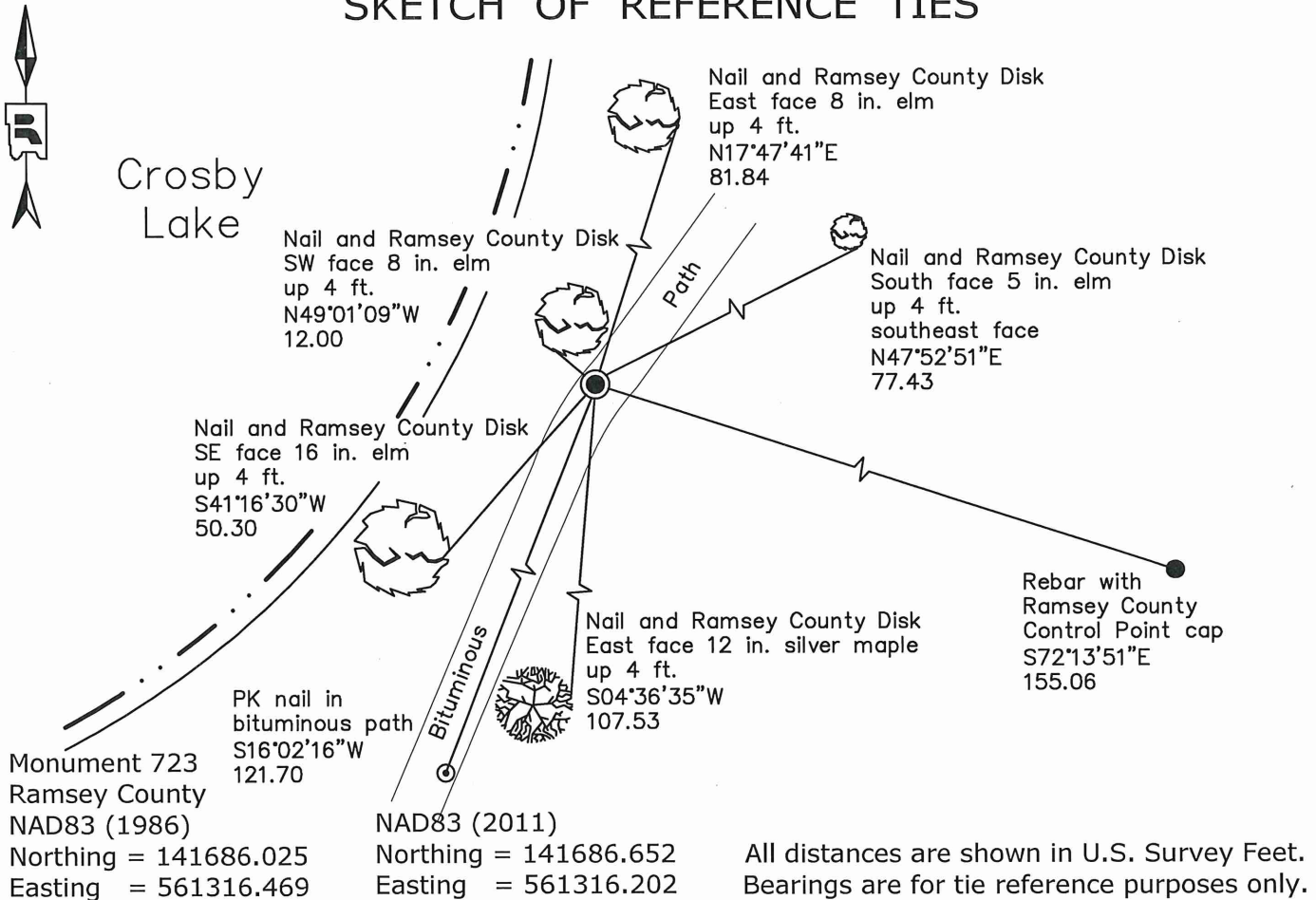
Southeast Corner of Section 15, Township 28 North, Range 23 West, County of Ramsey,  
State of Minnesota.

At the corner location shown on the sketch

On May 21, 2020 found a cast iron monument heaved up +/- 0.3 ft. Near lakeside edge of bituminous path in Crosby Lake Park.

On \_\_\_\_\_ placed a \_\_\_\_\_

### SKETCH OF REFERENCE TIES



Statements of evidence relative to this corner are on the following page.

I hereby certify that this survey, plan, or report was prepared by me or under my direct supervision, that I am a duly Licensed Land Surveyor under the laws of the state of Minnesota, and that this certificate is correct and complete to the best of my knowledge and belief.

*Devin R. Ball*      12/15/21

Devin R. Ball  
Deputy County Surveyor  
Minnesota License No. 56023

Date

OFFICE OF COUNTY SURVEYOR  
County of Ramsey

I hereby certify that this document was filed in the County Surveyor's office this 21<sup>st</sup> day of December, 2021.

*Daniel D. Baar*

Daniel D. Baar  
Ramsey County Surveyor  
Minnesota License No. 45816

# MONUMENT 723

Southeast Corner of Section 15, Township 28, Range 23

October 28, 1847	South between Sections 14 and 15. At 80.00 chains, set Post Corner to Sections 14, 15, 22 and 23. Elm 18 N73° East 153 "Do" 30 S31° West 131 Isaac N Higbee, Deputy Surveyor
February 1888	Found hub corresponding to bearing trees. Survey South line Sec 14-28-23. St. Paul Surveyor's Office
February 1888	Monument set by R J Johnson in place of hub which agrees with bearing trees. Survey West line Sec. 14-28-23. St. Paul Surveyor's Office
April 1888	Section break down by R J Johnson shows a granite monument at the corner. St. Paul Surveyor's Office
March 20, 1968	Found monument in place. A square monument symbol is shown at the corner. St. Paul Surveyor's Office
April 16, 1987	Found cast iron monument at grade on lakeside edge of asphalt path. St. Paul Surveyor's Office
April 19 & 23, 1990	Found a cast iron monument. St. Paul Surveyor's Office
December 17, 1990	Found a cast iron monument. St. Paul Surveyor's Office
March 24, 1999	No monument found. St. Paul Surveyor's Office
April 2, 1999	Set cast iron monument in concrete to grade of asphalt path, place ties. St. Paul Surveyor's Office
November 21, 2012	Found cast iron monument at asphalt grade. St. Paul Surveyor's Office
April 27, 2020	Found a cast iron monument heaved up +/- 0.3 ft. and inspected City of St. Paul ties. Ramsey County Surveyor's Office
May 21, 2020	Found a cast iron monument heaved up +/- 0.3 ft and recorded new local ties. Ramsey County Surveyor's Office