

# MONUMENT 652

## CERTIFICATE OF LOCATION OF GOVERNMENT CORNER

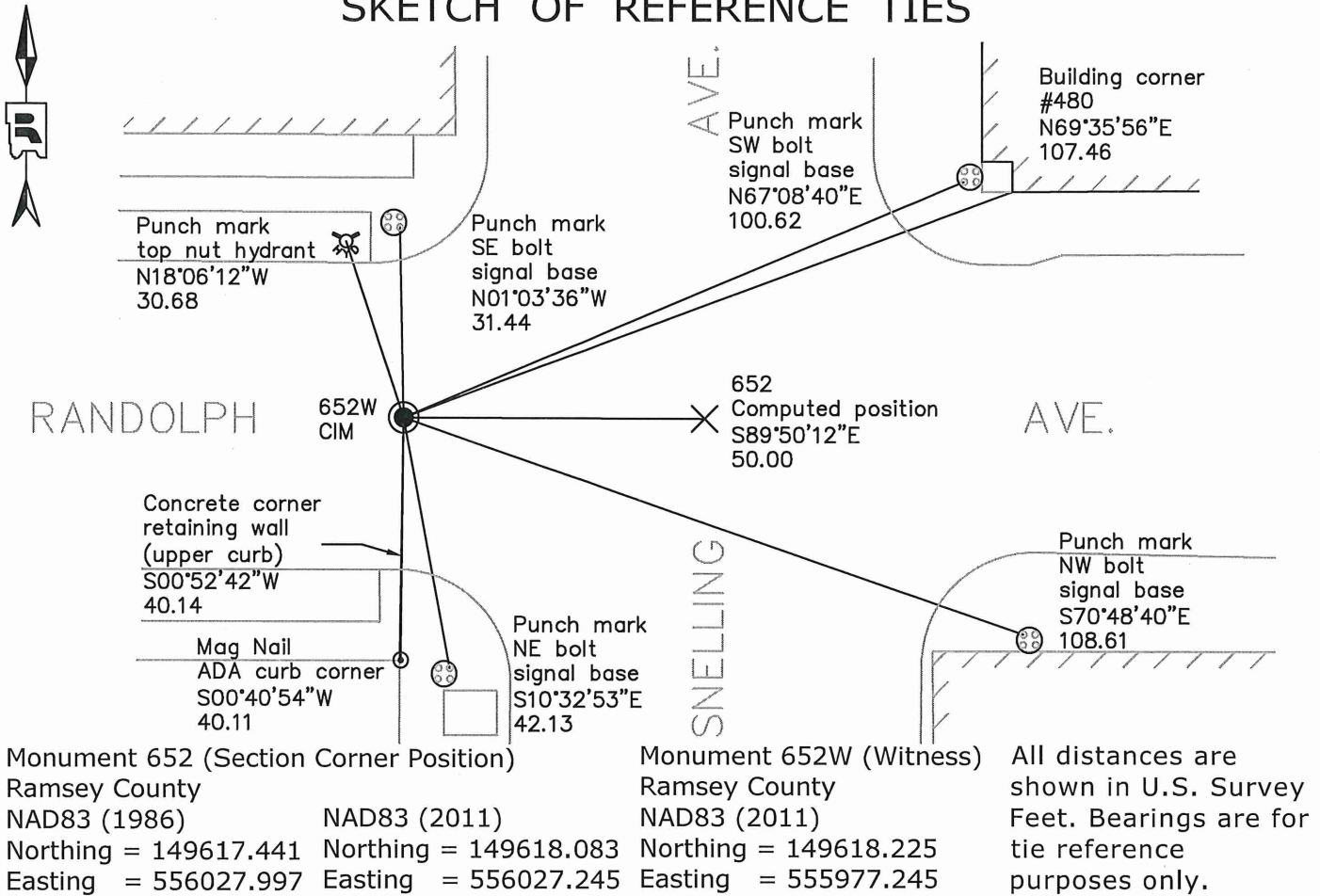
East Quarter Corner of Section 9, Township 28 North, Range 23 West, County of Ramsey, State of Minnesota.

At the corner location shown on the sketch

On March 25, 2021 found a cast iron monument at the witness corner location, flush in bituminous road. Monument is a witness to the East Quarter Corner position.

On \_\_\_\_\_ placed a \_\_\_\_\_

### SKETCH OF REFERENCE TIES



Statements of evidence relative to this corner are on the following page.

I hereby certify that this survey, plan, or report was prepared by me or under my direct supervision, that I am a duly Licensed Land Surveyor under the laws of the state of Minnesota, and that this certificate is correct and complete to the best of my knowledge and belief.

*Stephane J. Robert*      12/28/2021

Stephane J. Robert      Date  
 Deputy County Surveyor  
 Minnesota License No. 42642

OFFICE OF COUNTY SURVEYOR  
 County of Ramsey

I hereby certify that this document was filed in the County Surveyor's office this 28<sup>th</sup> day of December, 20 21.

*Daniel D. Baar*

Daniel D. Baar  
 Ramsey County Surveyor  
 Minnesota License No. 45816

# MONUMENT 652

East Quarter Corner of Section 9, Township 28, Range 23

October 29, 1847	North between Sections 9 & 10. At 40.00 chains set $\frac{1}{4}$ Section post. (652) Bur Oak 12 S40W 91 White Oak 12 N33E 1.38 Isaac N. Higbee, Deputy Surveyor
April, 1888	Monument set by T.J. McCarron. Point established by Armstrong, no date given. (652) St. Paul Surveyor's Office
July 28, 1927	Monument moved 50 feet to West line Snelling. I.S. Forsberg (652W) St. Paul Surveyor's Office
November, 1972	Found a P.K. Nail (Temporary) straddled. Chained Section Line distance from Monument at St. Clair (26+48.62). (652) St. Paul Surveyor's Office
January 17, 1983	Found P.K., P.K. checks Building ties. (652) St. Paul Surveyor's Office
January 23, 1985	Found P.K. (652) St. Paul Surveyor's Office
February 4, 1985	Set $\frac{7}{8}$ inch Iron Pin in Place of P.K. (652) St. Paul Surveyor's Office
1987	Found iron pin. (652) St. Paul Surveyor's Office
April 3, 1989	Found an iron pin at the corner. (652) St. Paul Surveyor's Office
July 11, 1991	Found the impression of the witness corner monument (as set by I.S. Forsberg). Monument obliterated by storm sewer construction and found in ditch. A center position of above described impression was tied out. (652W) St. Paul Surveyor's Office
1992	Computed new coordinate position for corner monument location, which is 0.565 feet northeast of the $\frac{7}{8}$ inch iron pin set in 1985. (652) St. Paul Surveyor's Office
January 27, 1992	Found a P.K. Nail at the monument location. (652) Found a cast iron monument at the reference monument location, 50.00 west of the P.K. Nail. (652W) St. Paul Surveyor's Office
March 22, 1996	Found a P.K. (652) St. Paul Surveyor's Office
April 14, 1997	Found a P.K. Nail. (652) St. Paul Surveyor's Office
March 2000	Placed P.K. (652) 50.00 feet East of westerly Reference Monument. (652W) St. Paul Surveyor's Office

# MONUMENT 652

East Quarter Corner of Section 9, Township 28, Range 23

March 4, 2002	Found a P.K. Nail at asphalt surface. (652) St. Paul Surveyor's Office
February 27, 2008	Found a P.K. Nail at grade. (652) St. Paul Surveyor's Office
June 7, 2012	Unable to locate P.K. prior to mill and overlay. (652) St. Paul Surveyor's Office
July 30, 2012	Investigated area after street milled; no evidence of monument found. (652) St. Paul Surveyor's Office
March 25, 2021	Found a cast iron monument, flush in bituminous road at the witness corner location. Recorded local ties. (652W) Ramsey County Surveyor's Office